

# Exhibit "A" Vicinity Map

OF TIMBER SALE CONTRACT NO 341-13-21  
KAUPPI THIN

PORTIONS OF SECTION 1, T5N, R6W AND  
PORTIONS OF SECTION 36, T6N, R6W, W.M.,  
CLATSOP COUNTY, OREGON.

MP 38

Highway 202

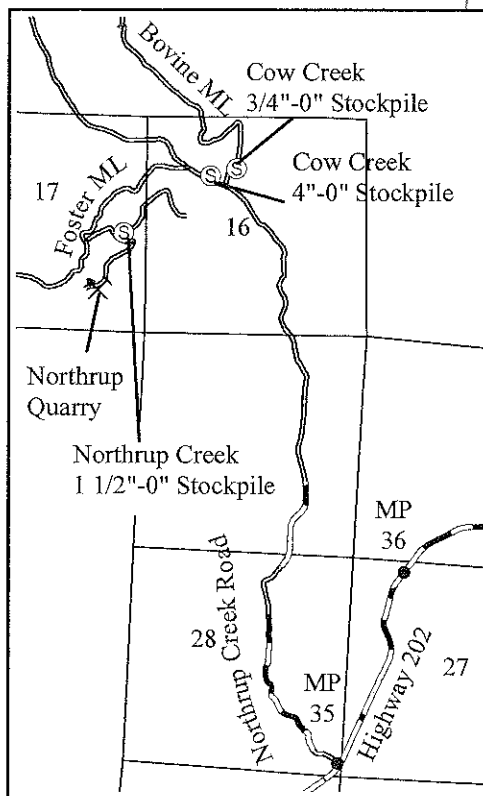
Approx.  
38 miles  
to Astoria

Approx.  
7 miles  
to Mist

Jones Road

### Legend

-  Quarry
-  Stockpile
-  Closed Roads
-  Paved Roads
-  Seasonally Restricted Roads
-  Surfaced Roads
-  New Construction Roads
-  New Construction Roads - Unsurfaced
-  Timber Sale Area



T6N, R6W

T5N, R6W

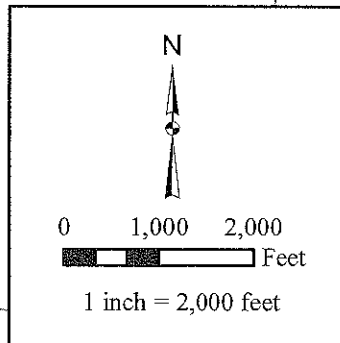
East Sager Road

Area 1

Kauppi ML

STATE PRIVATE

Clatsop County  
Columbia County

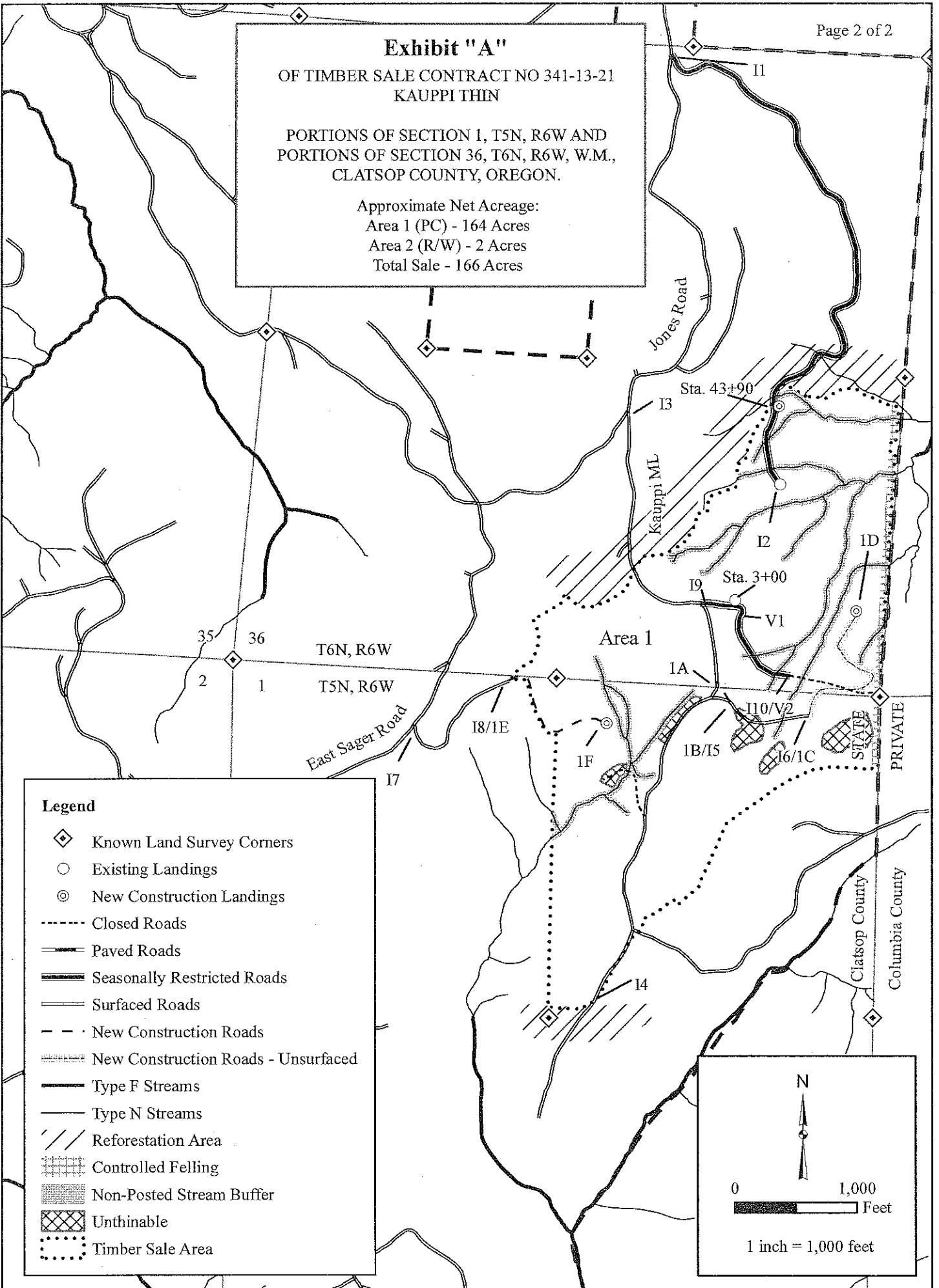


### Exhibit "A"

OF TIMBER SALE CONTRACT NO 341-13-21  
KAUPPI THIN

PORTIONS OF SECTION 1, T5N, R6W AND  
PORTIONS OF SECTION 36, T6N, R6W, W.M.,  
CLATSOP COUNTY, OREGON.

Approximate Net Acreage:  
Area 1 (PC) - 164 Acres  
Area 2 (R/W) - 2 Acres  
Total Sale - 166 Acres



#### Legend

- ◆ Known Land Survey Corners
- Existing Landings
- ⊙ New Construction Landings
- Closed Roads
- ==== Paved Roads
- ==== Seasonally Restricted Roads
- ==== Surfaced Roads
- - - New Construction Roads
- ==== New Construction Roads - Unsurfaced
- Type F Streams
- Type N Streams
- /// Reforestation Area
- ▨ Controlled Felling
- ▨ Non-Posted Stream Buffer
- ▣ Unthinable
- ⋯ Timber Sale Area

