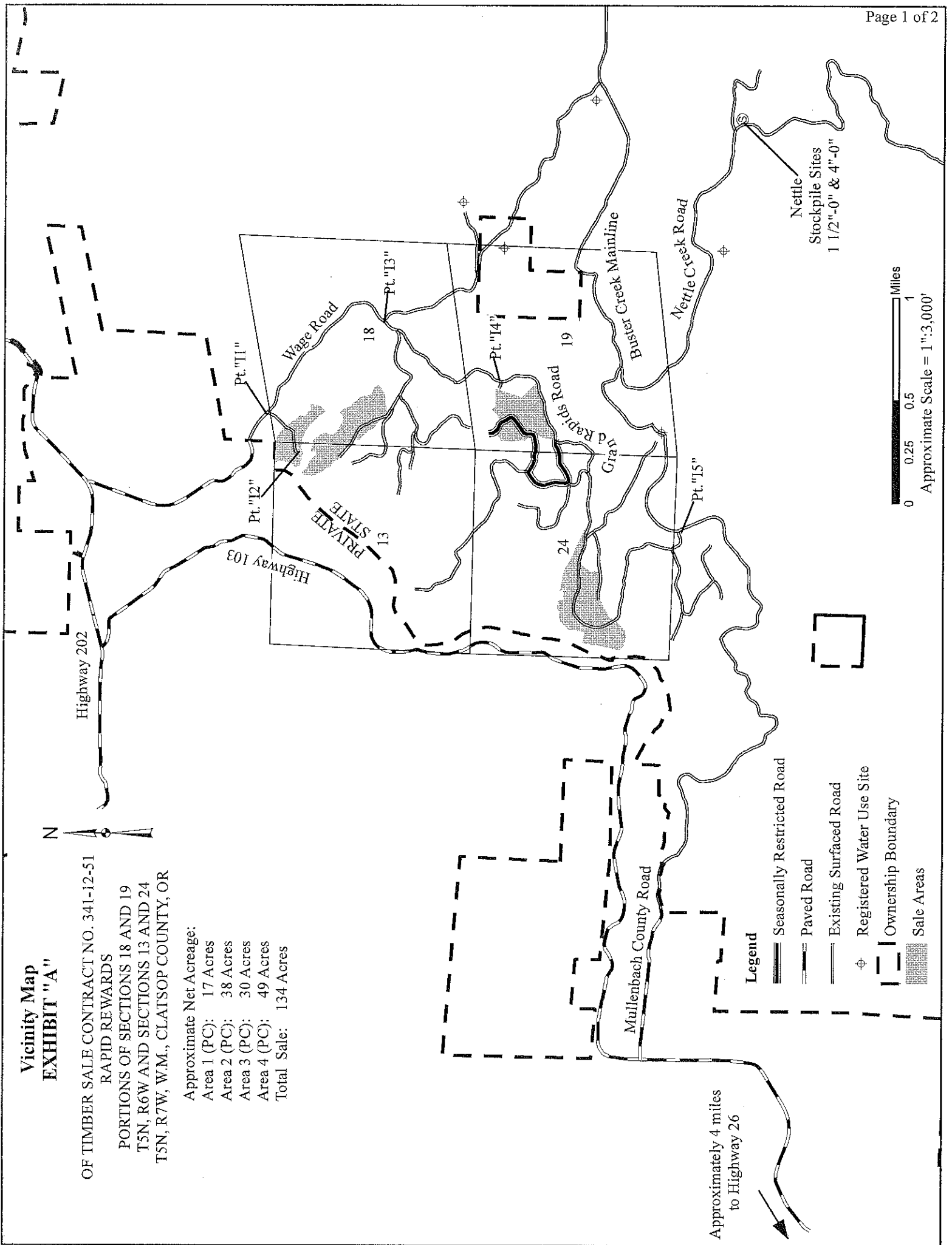


Vicinity Map EXHIBIT "A"

OF TIMBER SALE CONTRACT NO. 341-12-51
RAPID REWARDS
PORTIONS OF SECTIONS 18 AND 19
T5N, R6W AND SECTIONS 13 AND 24
T5N, R7W, W.M., CLATSOP COUNTY, OR

Approximate Net Acreage:
Area 1 (PC): 17 Acres
Area 2 (PC): 38 Acres
Area 3 (PC): 30 Acres
Area 4 (PC): 49 Acres
Total Sale: 134 Acres



0 0.25 0.5 1 Miles
Approximate Scale = 1":3,000'

Nettle
Stockpile Sites
1 1/2"-0" & 4"-0"

Legend

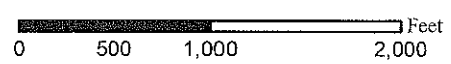
- Seasonally Restricted Road
- Paved Road
- Existing Surfaced Road
- Registered Water Use Site
- Ownership Boundary
- Sale Areas

Approximately 4 miles
to Highway 26

EXHIBIT "A"

OF TIMBER SALE CONTRACT NO. 341-12-51
 RAPID REWARDS
 PORTIONS OF SECTIONS 18 AND 19
 T5N, R6W AND SECTIONS 13 AND 24
 T5N, R7W, W.M., CLATSOP COUNTY, OR

Approximate Net Acreage:
 Area 1 (PC): 17 Acres
 Area 2 (PC): 38 Acres
 Area 3 (PC): 30 Acres
 Area 4 (PC): 49 Acres
 Total Sale: 134 Acres



Legend

Approximate Scale = 1":1,000'

- ◆ Known Land Survey Corner
- ▨ Controlled Felling Area
- /// Reforestation Area
- Seasonally Restricted Road
- Timber Sale Boundary
- Existing Landing
- Existing Surfaced Road
- Paved Road
- Type F Stream
- Type N Stream
- ⊙ Domestic Water Source
- - New Road Construction
- ▭ Ownership Boundary
- ▩ Non Thinnable Area
- ▨ Non Posted Stream Buffer

