

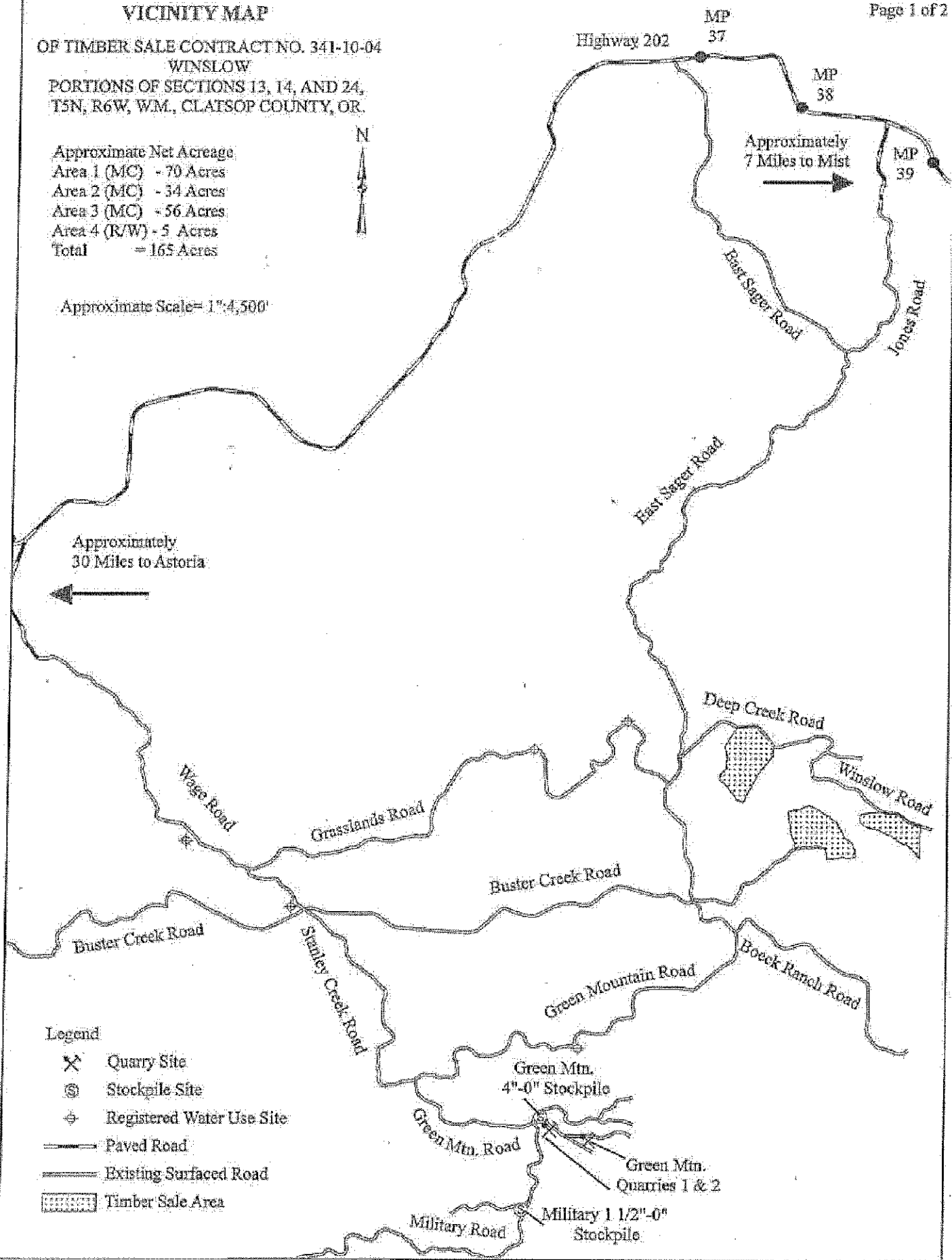
VICINITY MAP

OF TIMBER SALE CONTRACT NO. 341-10-04
 WINSLOW
 PORTIONS OF SECTIONS 13, 14, AND 24,
 T5N, R6W, W.M., CLATSOP COUNTY, OR.

Approximate Net Acreage
 Area 1 (MC) - 70 Acres
 Area 2 (MC) - 34 Acres
 Area 3 (MC) - 56 Acres
 Area 4 (R/W) - 5 Acres
 Total = 165 Acres



Approximate Scale = 1" = 4,500'



Legend

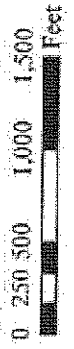
- ✕ Quarry Site
- ⊙ Stockpile Site
- ⊕ Registered Water Use Site
- Paved Road
- Existing Surfaced Road
- ▨ Timber Sale Area

Exhibit "A"

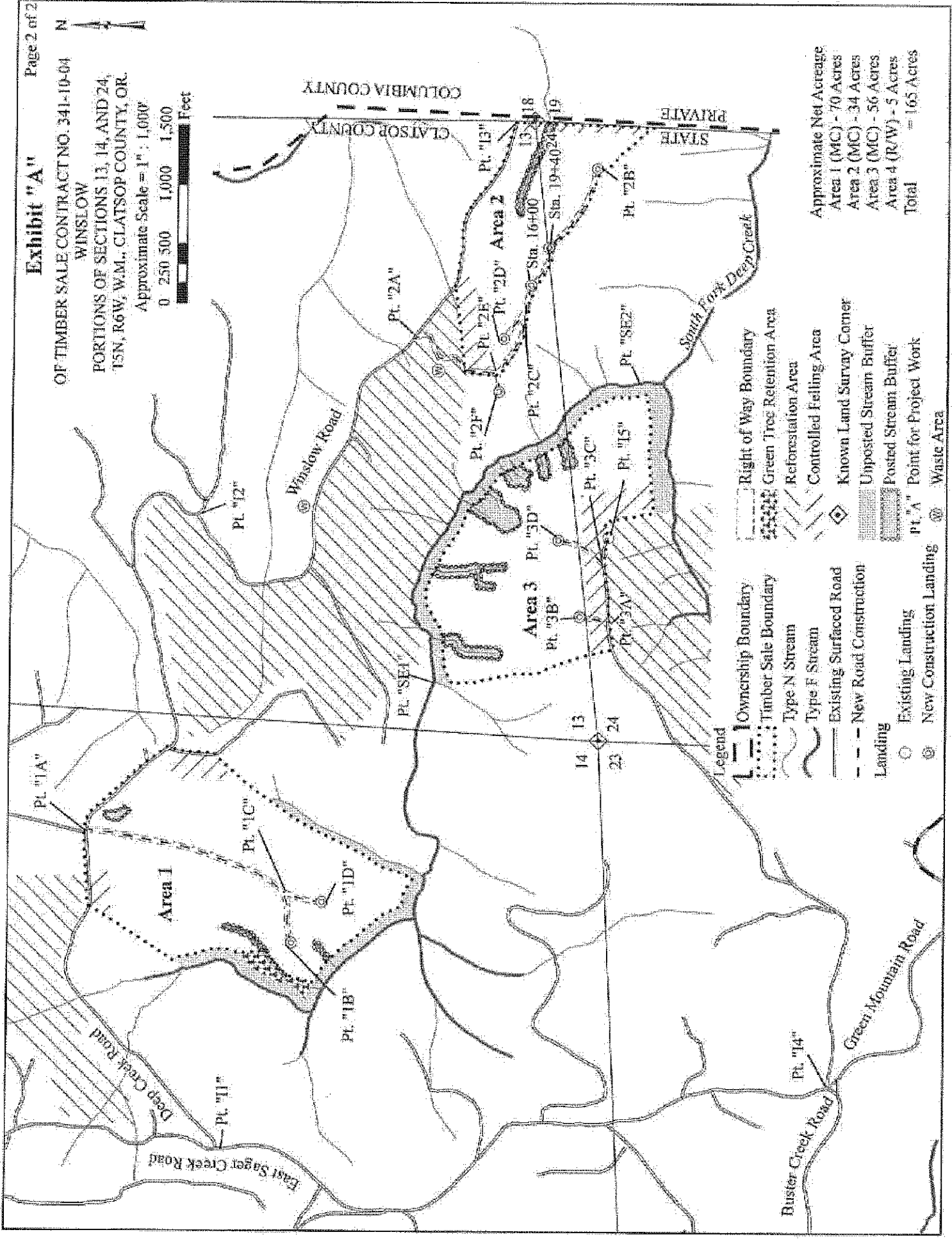
OF TIMBER SALE CONTRACT NO. 341-10-04
WINSLOW

PORTIONS OF SECTIONS 13, 14, AND 24
T5N, R6W, W.M., CLATSOP COUNTY, OR.

Approximate Scale = 1" = 1,000'



N



- Legend**
- Ownership Boundary
 - - - Timber Sale Boundary
 - Type N Stream
 - Type F Stream
 - Existing Surfaced Road
 - - - New Road Construction
 - Existing Landing
 - ⊙ New Construction Landing
 - Right of Way Boundary
 - Green Tree Retention Area
 - Reforestation Area
 - Controlled Felling Area
 - Known Land Survey Corner
 - Unposted Stream Buffer
 - Posted Stream Buffer
 - Pt. "A" Point for Project Work
 - Waste Area

Approximate Net Acreage

Area 1 (MC)	- 70 Acres
Area 2 (MC)	- 34 Acres
Area 3 (MC)	- 56 Acres
Area 4 (R/W)	- 5 Acres
Total	= 165 Acres

CLATSOP COUNTY

STATE PRIVATE

Winstow Road

South Fork Deep Creek

Buster Creek Road
Green Mountain Road

East Sager Creek Road

Deep Creek Road

Area 3

Area 1

Area 2

Pt. "1A"

Pt. "1C"

Pt. "1D"

Pt. "1B"

Pt. "1I"

Pt. "12"

Pt. "2A"

Pt. "2E"

Pt. "2F"

Pt. "3B"

Pt. "3A"

Pt. "3C"

Pt. "3D"

Pt. "3E"

Pt. "3F"

Pt. "3G"

Pt. "3H"

Pt. "3I"

Pt. "3J"

Pt. "3K"

Pt. "3L"

Pt. "3M"

Pt. "3N"

Pt. "3O"

Pt. "3P"

Pt. "3Q"

Pt. "3R"

Pt. "3S"

Pt. "3T"

Pt. "3U"

Pt. "3V"

Pt. "3W"

Pt. "3X"

Pt. "3Y"

Pt. "3Z"

Pt. "SE1"

Pt. "SE2"

Pt. "13"

Pt. "14"

Pt. "15"

Pt. "16"

Pt. "17"

Pt. "18"

Pt. "19"

Pt. "20"

Pt. "21"

Pt. "22"

Pt. "23"

Pt. "24"

Pt. "25"

Pt. "26"

Pt. "27"

Pt. "28"

Pt. "29"

Pt. "30"

Pt. "31"

Pt. "32"

Pt. "33"

Pt. "34"

Pt. "35"

Pt. "36"

Pt. "37"

Pt. "38"

Pt. "39"

Pt. "40"

Pt. "41"

Pt. "42"

Pt. "43"

Pt. "44"

Pt. "45"

Pt. "46"

Pt. "47"

Pt. "48"

Pt. "49"

Pt. "50"

Pt. "51"

Pt. "52"

Pt. "53"

Pt. "54"

Pt. "55"

Pt. "56"

Pt. "57"

Pt. "58"

Pt. "59"

Pt. "60"

Pt. "61"

Pt. "62"

Pt. "63"

Pt. "64"

Pt. "65"

Pt. "66"

Pt. "67"

Pt. "68"

Pt. "69"

Pt. "70"

Pt. "71"

Pt. "72"

Pt. "73"

Pt. "74"

Pt. "75"

Pt. "76"

Pt. "77"

Pt. "78"

Pt. "79"

Pt. "80"

Pt. "81"

Pt. "82"

Pt. "83"

Pt. "84"

Pt. "85"

Pt. "86"

Pt. "87"

Pt. "88"

Pt. "89"

Pt. "90"

Pt. "91"

Pt. "92"

Pt. "93"

Pt. "94"

Pt. "95"

Pt. "96"

Pt. "97"

Pt. "98"

Pt. "99"

Pt. "100"