

**Legend**

- Sale Boundary
- Marbled Murrelet Management Area
- Project Points**
- Landing
- Road Point
- Waste Area
- Roads**
- Purchaser Maintained Road
- State Maintained Road
- Reforestation Area
- Streams**
- Type F
- Type N Seasonal
- Type N Perennial
- Individual GTR Trees

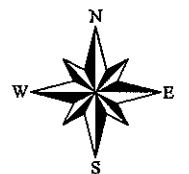
**EXHIBIT "A"**

OF TIMBER SALE No.  
341-09-37

UMPCOOS RIDGE No. 2  
PORTIONS OF SECTIONS 20  
AND 29, T22S, R10W, W.M.

DOUGLAS COUNTY, OREGON

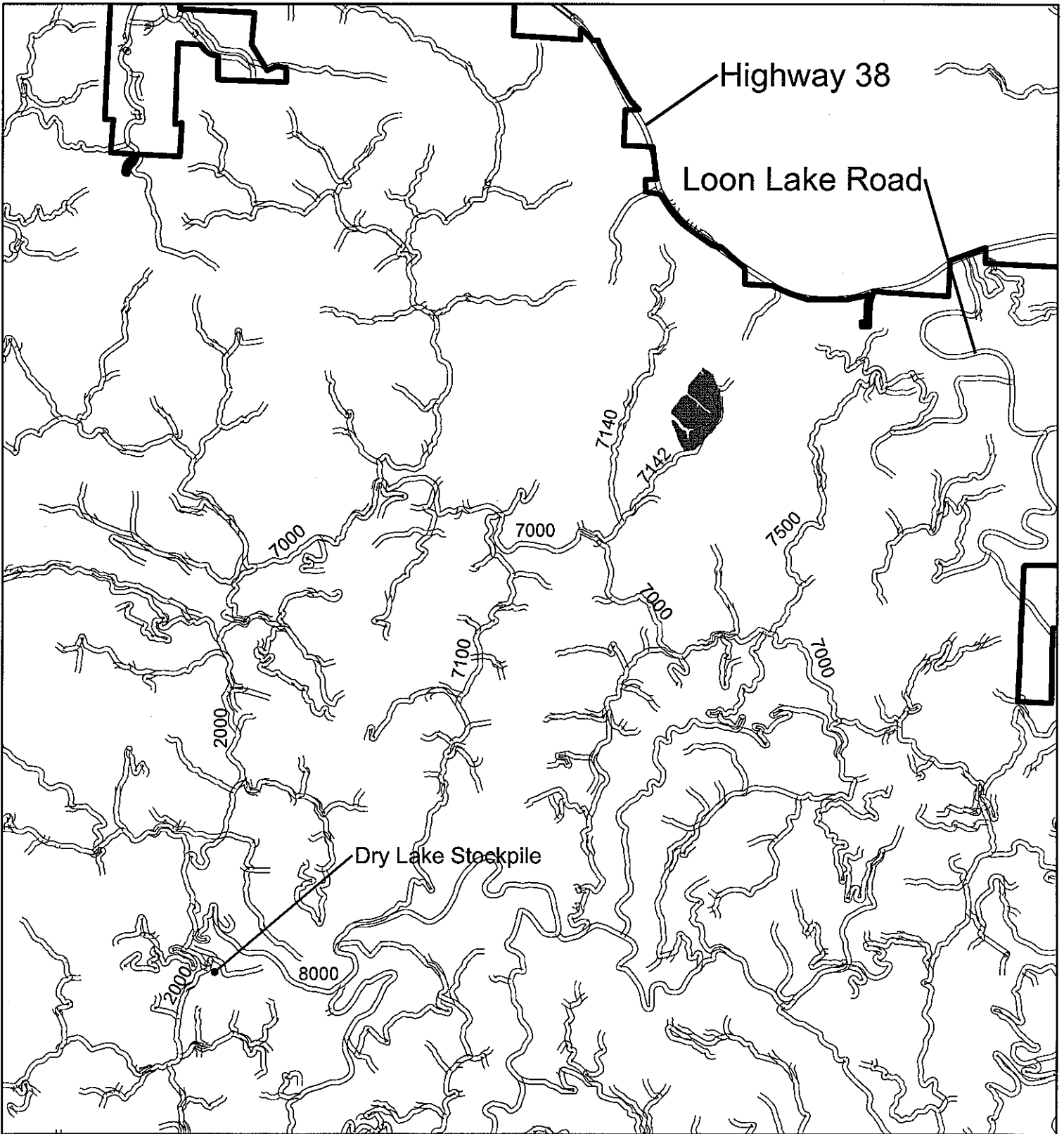
APPROXIMATELY 79 NET HARVEST ACRES




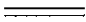

The information shown on this map depicts approximate locations. Exact locations of features represented by map symbols shall be determined on site and shall depend upon the conditions that exist on site. Activities will be conducted based upon features determined on site rather than feature shown on this map.



Approx 11 miles  
to HWY 38 via 7500 rd.



**Legend**

-  Elliott State Forest Boundary
-  Elliott State Forest Roads
-  Timber Sale Boundary

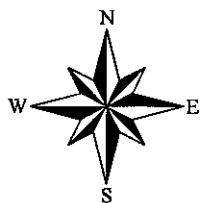
**EXHIBIT "A" Vicinity Map**

OF TIMBER SALE No. 341-09-73

UMPCOOS RIDGE No. 2  
PORTIONS OF SECTIONS 20  
AND 29, T22S, R10W, W.M.

DOUGLAS COUNTY, OREGON

APPROXIMATELY 79 NET HARVEST ACRES



The information shown on this map depicts approximate locations. Exact locations of features represented by map symbols shall be determined on site and shall depend upon the conditions that exist on site. Activities will be conducted based upon features determined on site rather than feature shown on this map.