

EXHIBIT "A"
 OF TIMBER SALE CONTRACT NO. 341-09-01
 ANNIE HAUL
 PORTIONS OF SECTIONS 30 & 31, T32S, R7 1/2E, W.M.
 KLAMATH COUNTY, OREGON
 110 ACRES

LEGEND					
	Section Line		Unsurfaced Road		Points
	Ownership Boundary		Unsurfaced Road (Construction Required)		Type F Stream
	Timber Sale Boundary (Posted)		Unsurfaced Road (Improvement Required)		
	State Highway		Land Survey Monument		

R.71/2 E



T.32S.

T.33S.

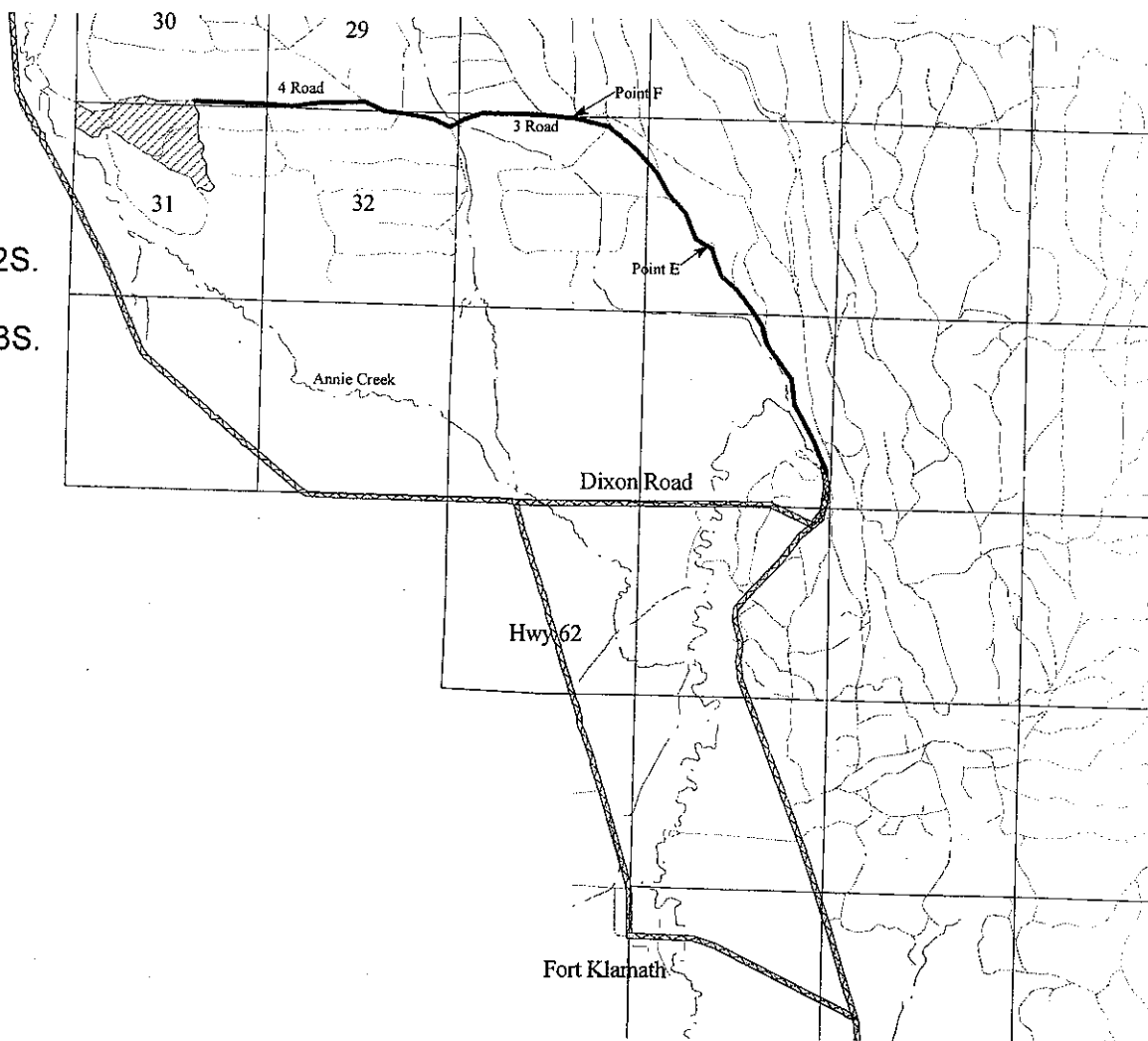
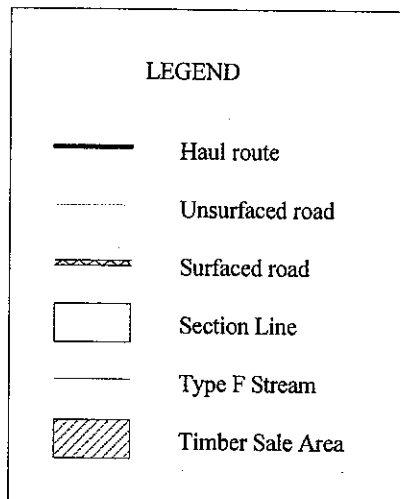


EXHIBIT "A"

VICINITY MAP
 OF TIMBER SALE CONTRACT NO. 341-09-01
 ANNIE HAUL
 PORTIONS OF SECTIONS 30 & 31, T32S, R7 1/2E, W.M.
 KLAMATH COUNTY, OREGON
 110 ACRES



Scale 1:63360 1 Inch = 1 Mile

