



"STEWARDSHIP IN FORESTRY"

Timber Sale Appraisal
Blastoria Salvage
Sale 341-08-93

District: Astoria

Date: May 27, 2008

cost summary

	Conifer	Hardwood	Total
Gross Timber Sale Value	\$786,235.50	\$350,533.68	\$1,136,769.18
		Project Work:	\$0.00
		Advertised Value:	\$1,136,769.18



"STEWARDSHIP IN FORESTRY"

Timber Sale Appraisal
Blastoria Salvage
Sale 341-08-93

District: Astoria

Date: May 27, 2008

timber description

Location: Portions of Sections 11, 14, 15, 16, 21, 22, 23, 25, 26, 27, and 28, T8N, R9W, W. M., Clatsop County, Oregon.

Stand Stocking: 60%

SpecieName	AvgDBH	Amortization (%)	Recovery (%)
Douglas - Fir	12	0	95
Western Hemlock / Fir	14	0	92
Alder (Red)	13	0	90

Volume by Grade	2S	3S	4S	Camprur	Total
Douglas - Fir	311	1,132	996	0	2,439
Western Hemlock / Fir	2,612	3,997	3,552	0	10,161
Alder (Red)	0	0	0	1,096	1,096
Total	2,923	5,129	4,548	1,096	13,696



"STEWARDSHIP IN FORESTRY"

Timber Sale Appraisal
Blastoria Salvage
Sale 341-08-93

District: Astoria

Date: May 27, 2008

comments: Western Hemlock and Sitka Spruce volumes were combined for calculation of one price. See volume spreadsheet and notice for species, sort, and grade volumes.

Pond Values Used: 1st Quarter Calendar Year 2008.

Expected Log Markets: Tillamook, OR and Longview, WA

Western Red Cedar Stumpage Price = Pond Value minus Logging Cost
\$795/MBF = \$1,050/MBF - \$255/MBF

HAULING

Hauling costs equivalent to \$700 daily truck cost.

OTHER COSTS (with Profit & Risk to be added):

Additional Logging Costs:

Felling and Bucking \$30/MBF x 13,696 MBF = \$410,880

Branding and Painting \$1/MBF x 13,696 MBF = \$13,696

Rock for crossing underground utility lines on estimated 20 entry points off Pipeline County Road. 10 cy per entry point equals 200 cubic yards at \$12.00 per yard placed and spread = \$2,400

Open and close dirt spurs (10 hrs X \$94) = \$940

Slash Piling on Cable Landings with log loader/shovel 20 landings at 3 hours per landing = 60 hours X \$87.50/hr = \$5,250

TOTAL OTHER COSTS (with Profit & Risk to be added) = \$433,166

OTHER COSTS (No Profit & Risk added)

Slash Piling in Areas 1 and 2: \$120/hour x 100 hours (excavator)
or \$87.50/hour x 137.1 hours (log loader) = \$12,000

Slash Piling in salvage areas: \$87.50/ hour x 55 hours (log loader) = \$4,812.50

Slash Piling equipment move-in: 1 times x \$1,200/move = \$1,200

TOTAL OTHER COSTS (No Profit & Risk added): \$18,012.50



"STEWARDSHIP IN FORESTRY"

Timber Sale Appraisal
Blastoria Salvage
Sale 341-08-93

District: Astoria

Date: May 27, 2008

logging conditions

combination#: 1 Douglas - Fir 32.00%
 Western Hemlock / Fir 32.00%
 Alder (Red) 32.00%

yarding distance: Medium (800 ft) downhill yarding: No
logging system: Track Skidder Process: Stroke Delimber

tree size: Mature Private Forest / Regen Cut (250 Bft/tree), 6-11 logs/MBF
loads / day: 7.0 bd. ft / load: 3,000
cost / mbf: \$68.49

machines: Stroke Delimber (B)

combination#: 2 Douglas - Fir 33.00%
 Western Hemlock / Fir 33.00%
 Alder (Red) 33.00%

yarding distance: Medium (800 ft) downhill yarding: No
logging system: Cable: Small Tower <=40 Process: Stroke Delimber

tree size: Mature Private Forest / Regen Cut (250 Bft/tree), 6-11 logs/MBF
loads / day: 6.0 bd. ft / load: 3,000
cost / mbf: \$157.46

machines: Log Loader (A)
Stroke Delimber (A)
Tower Yarder (Small)

combination#: 3 Douglas - Fir 28.00%
 Western Hemlock / Fir 28.00%
 Alder (Red) 28.00%

yarding distance: Medium (800 ft) downhill yarding: No
logging system: Track Skidder Process: Stroke Delimber

tree size: Small / Thinning 12in (130 Bft/tree), 12-17 logs/MBF
loads / day: 7.0 bd. ft / load: 3,000
cost / mbf: \$68.49

machines: Stroke Delimber (B)

combination#: 4 Douglas - Fir 7.00%
 Western Hemlock / Fir 7.00%
 Alder (Red) 7.00%

yarding distance: Medium (800 ft) downhill yarding: No
logging system: Cable: Small Tower <=40 Process: Stroke Delimber

tree size: Small / Thinning 12in (130 Bft/tree), 12-17 logs/MBF
loads / day: 6.0 bd. ft / load: 3,000
cost / mbf: \$157.46



"STEWARDSHIP IN FORESTRY"

Timber Sale Appraisal
Blastoria Salvage
Sale 341-08-93

District: Astoria

Date: May 27, 2008

machines: Log Loader (A)
Stroke Delimber (A)
Tower Yarder (Small)



"STEWARDSHIP IN FORESTRY"

Timber Sale Appraisal
Blastoria Salvage
Sale 341-08-93

District: Astoria

Date: May 27, 2008

logging costs

Operating Seasons:	2.00	Profit Risk:	20.00%
Project Costs:	\$0.00	Other Costs (P/R):	\$433,166.00
Slash Disposal:	\$0.00	Other Costs:	\$18,012.50

Miles of Road

Road Maintenance: \$3.20

Dirt	Rock (Contractor)	Rock (State)	Paved
0.0	0.0	0.0	0.0

Hauling Costs

Species	\$ / MBF	Trips/Day	MBF / Load
Douglas - Fir	\$0.00	3.0	3.0
Western Hemlock / Fir	\$0.00	3.0	3.0
Sitka Spruce	\$0.00	2.0	3.0
Alder (Red)	\$0.00	2.0	2.5



"STEWARDSHIP IN FORESTRY"

Timber Sale Appraisal
Blastoria Salvage
Sale 341-08-93

District: Astoria

Date: May 27, 2008

logging costs breakdown

Logging	Road Maint	Fire Protect	Hauling	Other P/R appl	Profit & Risk	Slash Disposal	Scaling	Other	Total
Douglas - Fir									
\$104.08	\$3.36	\$0.64	\$68.05	\$31.63	\$41.55	\$0.00	\$2.00	\$1.32	\$252.63
Western Hemlock / Fir									
\$104.08	\$3.46	\$0.64	\$69.99	\$31.63	\$41.96	\$0.00	\$2.00	\$1.32	\$255.08
Alder (Red)									
\$104.08	\$3.52	\$0.64	\$128.34	\$31.63	\$53.64	\$0.00	\$2.00	\$1.32	\$325.17

Specie	Amortization	Pond Value	Stumpage	Amortized
Douglas - Fir	\$0.00	\$370.27	\$117.64	\$0.00
Western Hemlock / Fir	\$0.00	\$304.22	\$49.14	\$0.00
Alder (Red)	\$0.00	\$645.00	\$319.83	\$0.00



"STEWARDSHIP IN FORESTRY"

Timber Sale Appraisal
Blastoria Salvage
Sale 341-08-93

District: Astoria

Date: May 27, 2008

summary

Amortized

Specie	MBF	Value	Total
Douglas - Fir	0	\$0.00	\$0.00
Western Hemlock / Fir	0	\$0.00	\$0.00
Alder (Red)	0	\$0.00	\$0.00

Unamortized

Specie	MBF	Value	Total
Douglas - Fir	2,439	\$117.64	\$286,923.96
Western Hemlock / Fir	10,161	\$49.14	\$499,311.54
Alder (Red)	1,096	\$319.83	\$350,533.68

Gross Timber Sale Value

Recovery: \$1,136,769.18

Prepared by: Jay Morey

Phone: 503-325-5451

APPRAISAL ATTACHMENT
Conversions from MBF to TONS

Species	MBF	Conversion Factor (TONS per MBF)	Total TONS	Appraised \$/MBF	Converted \$/Ton	Gross Sale Value
Doug-fir	2,439	6.5	15,854	\$117.64	\$18.10	\$286,923.96
Hemlock/ true fir ¹	9,202	7.0	64,414	\$49.14	\$7.02	\$452,186.28
Sitka Spruce ¹	959	7.0	6,713	\$49.14	\$7.02	\$47,125.26
Red Alder	1,096	7.5	8,220	\$319.83	\$42.64	\$350,533.68
Red Cedar		6.5		\$795.00	\$122.31	
Total/ Average =	13,696	6.95	95,201			\$1,136,769.18

¹ Hemlock/ true fir/ and spruce volumes were combined in the appraisal to calculate one price.

Road Maintenance Cost Summary (Interim and Post Harvest)

Sale: Blastoria Salvage
Date: May 6, 2008
By: Jay Morey

MBF: 13,696
\$/MBF: \$3.20

Type	Equipment/Rationale	Move-in Rate	Times	Hours	Rate	Cost
Interim Road Maintenance 1st Entry	Grader 14G	\$668	1	20	\$90	\$2,468
	Dump Truck 12CY	\$140	2	10	\$73	\$1,010
	FE Loader C966	\$668	1	4	\$74	\$964
Interim Road Maintenance 2nd Entry	Grader 14G	\$668	1	20	\$90	\$2,468
	Dump Truck 12CY	\$140	2	10	\$73	\$1,010
	FE Loader C966	\$668	1	4	\$74	\$964
Final Road Maintenance w/o compaction	Grader 14G	\$668	1	30	\$90	\$3,368
	Dump Truck 12CY	\$140	2	36	\$73	\$2,908
	FE Loader C966	\$668	1	10	\$74	\$1,408
	Labor			24	\$37	\$888
Final Road Maintenance w/ compaction	Grader 14G	\$668	1	80	\$90	\$7,868
	Dump Truck 12CY	\$140	2	60	\$73	\$4,660
	FE Loader C966	\$668	1	16	\$74	\$1,852
	Vibratory Roller	\$668	1	80	\$73	\$6,508
	Water Truck 2,500 gallon	\$163	1	50	\$78	\$4,063
	Labor			40	\$37	\$1,480
Total						
						\$43,887

Interim Road Maintenance

Production Rates	Miles/day	Distance(miles)	Days	Hours
Grader	2.5	5.0	2.0	20.0

Final Road Maintenance - without compaction

Production Rates	Miles/day	Distance(miles)	Days	Hours
Grader	2.5	7.5	3.0	30.0

Final Road Maintenance - with compaction

Production Rates	Miles/day	Distance(miles)	Days	Hours
Grader	1.5	12.0	8.0	80.0
Vibratory Roller	1.5	12.0	8.0	80.0

Blastoria Salvage

The sale areas are located in portions of Sections 11, 14, 15, 16, 21, 22, 23, 25, 27, and 28 T8N, R9W, W. M., Clatsop County, Oregon.

BOF = 100%	Tax Code =	1-01	(1.0%)
		1-02	(29.6%)
		1-04	(3.4%)
		1-08	(66.0%)

Area	Original Sale Name	Harvest Type	Net Acres	Survey Method
1	Astoria Basin Thinning/ Jackpipe	Modified Clearcut	625.5	GIS
2	Astoria Basin Thinning	Modified Clearcut	139.0	GIS
A, C, D, E	Mill Creek Combination/ None	Salvage	301.5	GIS
B	Williamsport Thinning	Salvage	204.0	GIS
F	Williamsport Thinning	Salvage	42.0	GIS
G through O	Astoria Basin Thinning	Salvage	196.0	GIS
TOTAL			1,508	

The Stand Level Inventory (SLI) data for all areas were used as a basis for this cruise. Harvest volumes for all areas are based on a percentage estimation of volume to be salvaged minus the volume harvested in previous sales and anticipated defect and breakage. Data from past timber sale cruises in the area were used to establish sort/grade volumes. The cruise calculations were processed in the Astoria District office. See attached spreadsheet.

Areas A and C (Salvage) – Portions of these stands were not in previous timber sales. Area A consists of mixed conifer, mainly Western Hemlock and Sitka Spruce ranging from 40-84 years old. Area C consists of moderate sized, Western Hemlock, Douglas-fir, Sitka Spruce and alder with traces of cedar. Wind storms have significantly damaged portions of these stands, resulting in several large patches of blown-down timber with few standing trees remaining as well as scattered blow-down. These stands will be salvage logged, harvesting only those trees blown down and those that are root sprung (leaning).

Areas B, and D through O (Salvage) – These stands were “auto-mark” partial cut three to twelve years ago, and are approximately 40 to 65 years old, consisting of small and moderate sized Western Hemlock, Douglas-fir, Sitka Spruce and alder with traces of cedar. The condition of these stands are similar to Areas A and C and will be salvage logged in the same manner.

Areas 1, and 2 (Modified Clearcut) – These stands are similar to Areas A through O. These stands will be logged to salvage downed trees and the anticipated blow-down of the remaining standing trees. These stands range in age from 40 to 60 years old. These areas will require whole tree logging and the removal of saw logs and pulp.

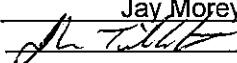
6. **Statistical Analysis and Stand Summary:** A statistical analysis was not calculated. See attached spreadsheet.

7. Volumes by Species and Sale Areas: Volumes do not include "in-growth". The total net MBF volumes by species and grade are as follows:

Species	DBH	Net. Vol.	2 Saw	3 Saw	4 Saw	Camp Run	Sale%
Douglas-fir	12"	2,439	311	1,132	996		18%
W. Hemlock / True Fir	14"	9,202	2,325	3,661	3,216		67%
Spruce	14"	959	287	336	336		7%
Alder	13"	1,096				1,096	8%
Totals		13,696	2,923	5,129	4,548	1,096	100

Gross volumes were reduced for defect and breakage by 25 percent.

8. Approvals:

Prepared by: Jay Morey
 Approved by: 

Date: May 4, 2008
 Date: 5/15/2008

9. Attachment:

Volume Breakdown Spreadsheet (2 Pages)

X:\Sunset Unit\2009 FY Sales\Blastoria Salvage\Sale Prep\Cruise\Cruise Report-Blastoria Salvage.doc

Blastoria Salvage Estimated Volumes

Area	Cruise Data / SLI	SLI Stand ID	Harvest Type	Net Acres	Anticipated Salvage %	Anticipated Salvage Acreage	BF/ Acre Total	Total BF	% Volume Previously Removed	Total BF less Volume Previously Removed	Total BF less Damage & Breakage (-25%)	Total MBF
1	SLI	23202	MC	94.0	90%	84.6	21,105	1,785,483	30%	1,249,838	937,379	937.4
1	SLI	23132	MC	155.0	90%	139.5	25,179	3,512,471	30%	2,458,729	1,844,047	1,844.0
1	SLI	23132	MC	105.0	90%	94.5	25,179	2,379,416	0%	2,379,416	1,784,562	1,784.6
1	SLI	23136	MC	271.5	90%	244.4	18,122	4,428,111	30%	3,099,677	2,324,758	2,324.8
1		Totals		625.5		563.0						6,890.7
2	SLI	23221	MC	111.0	90%	99.9	28,167	2,813,883	30%	1,969,718	1,477,289	1,477.3
2	SLI	23258	MC	28.0	90%	25.2	37,602	947,570	30%	663,299	497,474	497.5
2		Totals		139.0		125.1						1,974.8
A	SLI	23095	Salvage	118.0	60%	70.8	33,344	2,360,755	0%	2,360,755	1,770,566	1,770.6
A	SLI	23100	Salvage	30.0	40%	12.0	14,188	170,256	0%	170,256	127,692	127.7
A	SLI	23128	Salvage	30.0	40%	12.0	13,137	157,644	0%	157,644	118,233	118.2
A	SLI	23127	Salvage	19.0	60%	11.4	49,047	559,136	0%	559,136	419,352	419.4
A		Totals		197.0	2.0	106.2						2,435.8
B	SLI	23125	Salvage	204.0	20%	40.8	19,247	785,278	0%	785,278	588,958	589.0
C	SLI	23046	Salvage	38.0	50%	19.0	14,896	283,024	0%	283,024	212,268	212.3
D	SLI	23055	Salvage	20.0	40%	8.0	25,247	201,976	0%	201,976	151,482	151.5
E	SLI	23103	Salvage	46.5	40%	18.6	17,742	330,001	0%	330,001	247,501	247.5
F	SLI	23203	Salvage	25.0	25%	6.3	24,167	151,044	0%	151,044	113,283	113.3
F	SLI	23218	Salvage	17.0	40%	6.8	19,515	132,702	0%	132,702	99,527	99.5
F		Totals		42.0		13.1						212.8
G	SLI	23136	Salvage	8.5	40%	3.4	18,122	61,615	30%	43,130	32,348	32.3
H	SLI	23136	Salvage	14.0	40%	5.6	18,122	101,483	30%	71,038	53,279	53.3
I	SLI	23136	Salvage	12.5	40%	5.0	18,122	90,610	30%	63,427	47,570	47.6

Blastoria Salvage Estimated Volumes

Area	Cruise Data / SLI	SLI Stand ID	Harvest Type	Net Acres	Anticipated Salvage %	Anticipated Salvage Acreage	BF/ Acre Total	Total BF	% Volume Previously Removed	Total BF less Volume Previously Removed	Total BF less Damage & Breakage (-25%)	Total MBF
I	SLI	23132	Salvage	12.5	40%	5.0	25,179	125,895	30%	88,127	66,095	66.1
I		Totals		25.0		10.0						113.7
J	SLI	23132	Salvage	9.0	40%	3.6	25,179	90,644	0%	90,644	67,983	68.0
J	SLI	23132	Salvage	15.0	40%	6.0	25,179	151,074	30%	105,752	79,314	79.3
J		Totals		24.0		9.6						147.3
K	SLI	23132	Salvage	30.0	40%	12.0	25,179	302,148	30%	211,504	158,628	158.6
L	SLI	23221	Salvage	12.0	40%	4.8	28,167	135,202	30%	94,641	70,981	71.0
M	SLI	23221	Salvage	38.0	40%	15.2	28,167	428,138	30%	299,697	224,773	224.8
N	SLI	23263	Salvage	18.0	40%	7.2	16,552	119,174	30%	83,422	62,567	62.6
O	SLI	23255	Salvage	26.5	25%	6.6	34,084	225,807	30%	158,065	118,548	118.5
				1,508.0		968.1						13,696

Blastoria Salvage

341-08-93

APPRAISAL ATTACHMENT Conversions from MBF to TONS

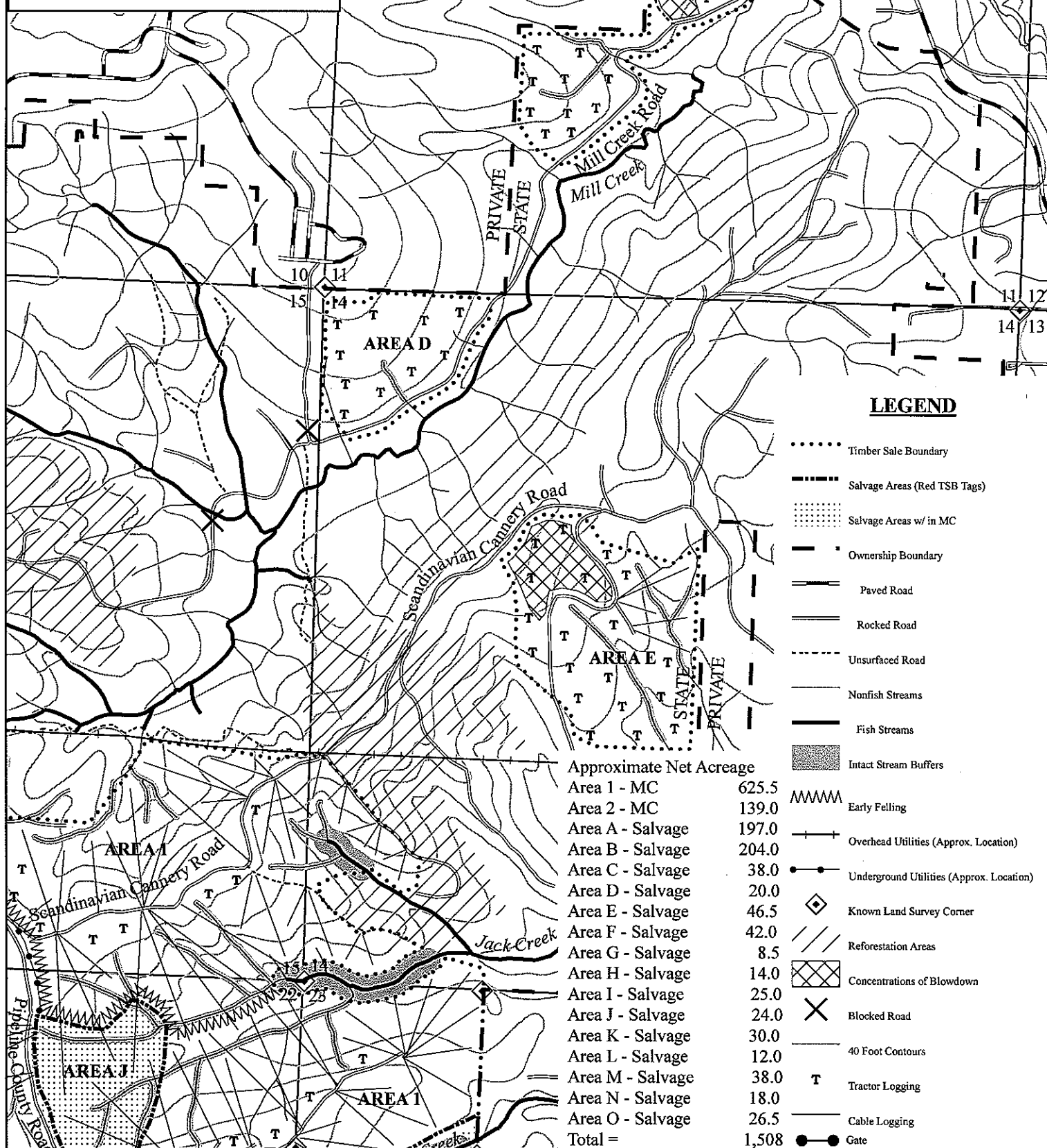
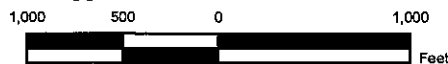
Species	MBF	Conversion Factor (TONS per MBF)	Total TONS	Appaised \$/MBF	Converted \$/Ton	Gross Sale Value
Doug-fir	2,439	6.5	15,854	\$117.64	\$18.10	\$286,923.96
Hemlock/ true fir ¹	9,202	7.0	64,414	\$49.14	\$7.02	\$452,186.28
Sitka Spruce ¹	959	7.0	6,713	\$49.14	\$7.02	\$47,125.26
Red Alder	1,096	7.5	8,220	\$319.83	\$42.64	\$350,533.68
Red Cedar		6.5		\$795.00	\$122.31	
Total/ Average =	13,696	6.95	95,201			\$1,136,769.18

¹ Hemlock/ true fir/ and spruce volumes were combined in the appraisal to calculate one price.

LOGGING PLAN
 OF TIMBER SALE CONTRACT NO. 341-08-93
 BLASTORIA SALVAGE
 PORTIONS OF SECTIONS 11, 14, 15, 16, 21,
 22, 23, 25, 27, AND 28, T8N, R9W, W.M.,
 CLATSOP COUNTY, OREGON



Approximate Scale 1" = 1,000'



LEGEND

- Timber Sale Boundary
- Salvage Areas (Red TSB Tags)
- Salvage Areas w/ in MC
- Ownership Boundary
- ===== Paved Road
- ===== Rocked Road
- Unsurfaced Road
- Nonfish Streams
- Fish Streams
- Intact Stream Buffers
- Early Felling
- Overhead Utilities (Approx. Location)
- Underground Utilities (Approx. Location)
- Known Land Survey Corner
- Reforestation Areas
- Concentrations of Blowdown
- Blocked Road
- 40 Foot Contours
- T Tractor Logging
- Cable Logging
- Gate

Approximate Net Acreage

Area 1 - MC	625.5
Area 2 - MC	139.0
Area A - Salvage	197.0
Area B - Salvage	204.0
Area C - Salvage	38.0
Area D - Salvage	20.0
Area E - Salvage	46.5
Area F - Salvage	42.0
Area G - Salvage	8.5
Area H - Salvage	14.0
Area I - Salvage	25.0
Area J - Salvage	24.0
Area K - Salvage	30.0
Area L - Salvage	12.0
Area M - Salvage	38.0
Area N - Salvage	18.0
Area O - Salvage	26.5
Total =	1,508

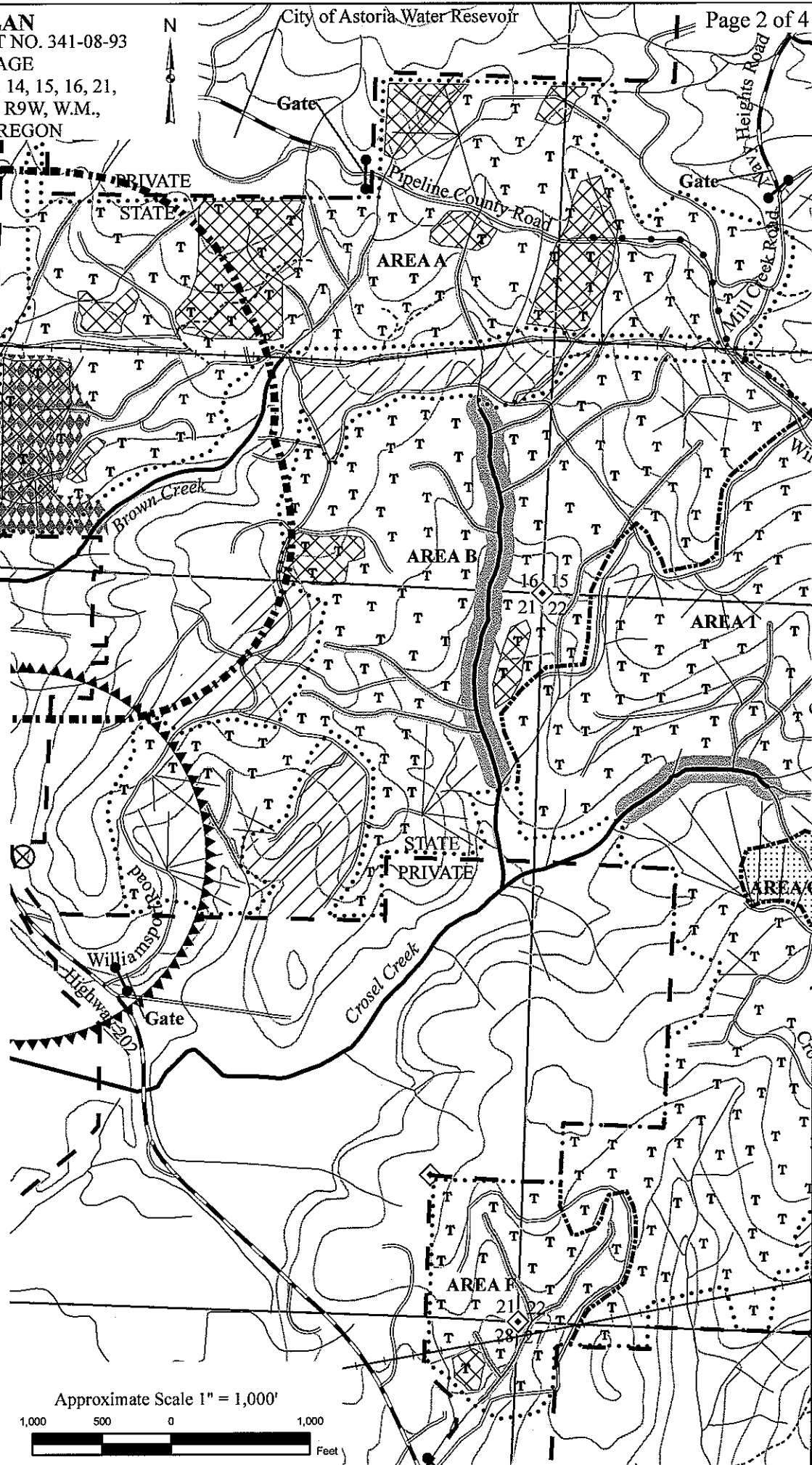
LOGGING PLAN
OF TIMBER SALE CONTRACT NO. 341-08-93
BLASTORIA SALVAGE
PORTIONS OF SECTIONS 11, 14, 15, 16, 21,
22, 23, 25, 27, AND 28, T8N, R9W, W.M.,
CLATSOP COUNTY, OREGON

Approximate Net Acreage

Area 1 - MC	625.5
Area 2 - MC	139.0
Area A - Salvage	197.0
Area B - Salvage	204.0
Area C - Salvage	38.0
Area D - Salvage	20.0
Area E - Salvage	46.5
Area F - Salvage	42.0
Area G - Salvage	8.5
Area H - Salvage	14.0
Area I - Salvage	25.0
Area J - Salvage	24.0
Area K - Salvage	30.0
Area L - Salvage	12.0
Area M - Salvage	38.0
Area N - Salvage	18.0
Area O - Salvage	26.5
Total =	1,508

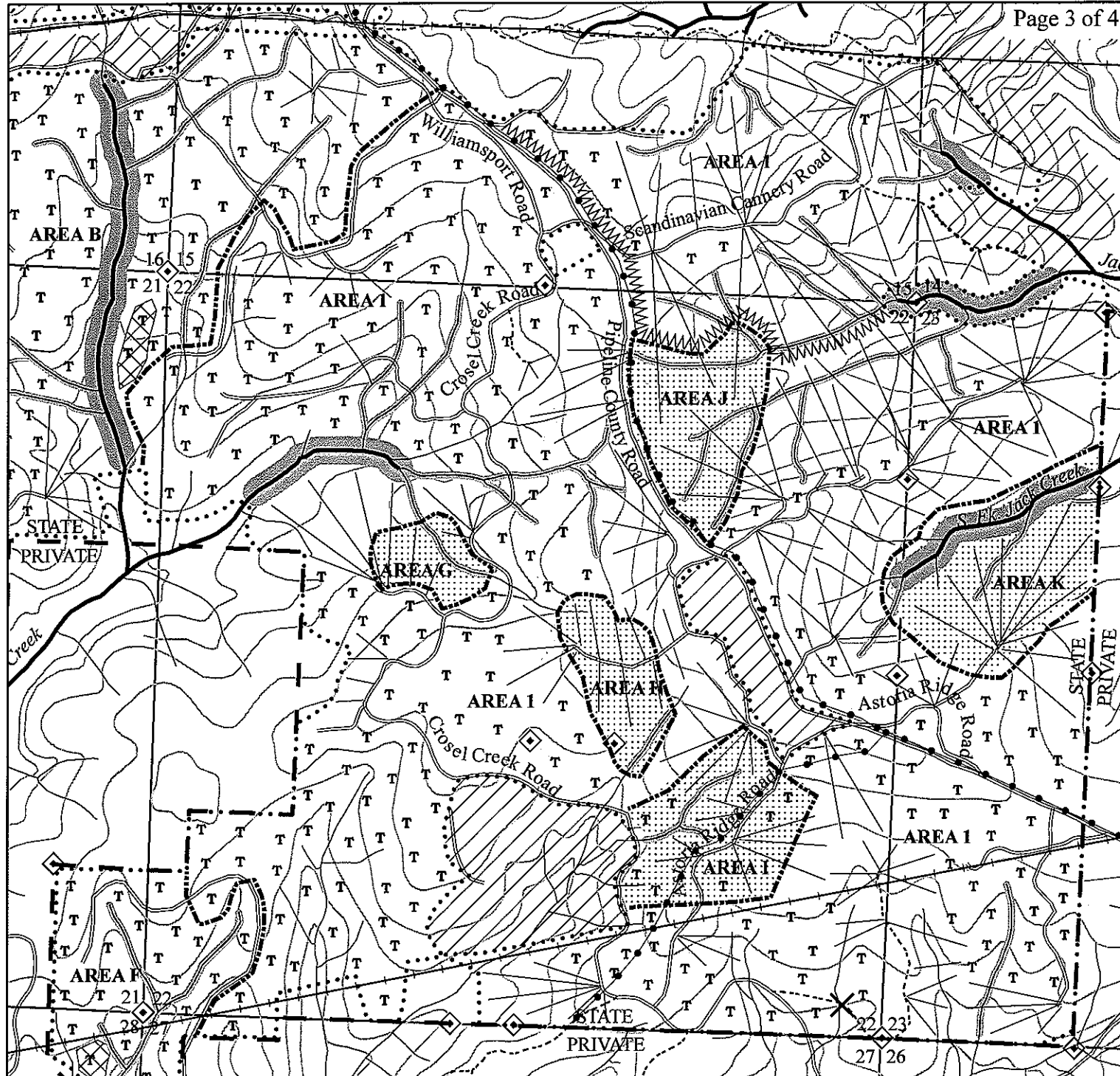
LEGEND

- Timber Sale Boundary
- Salvage Areas (Red TSB Tags)
- Salvage Areas w/ in MC
- Ownership Boundary
- ===== Paved Road
- ===== Rocked Road
- Unsurfaced Road
- Nonfish Streams
- ===== Fish Streams
- ===== Intact Stream Buffers
- Overhead Utilities (Approx. Location)
- Underground Utilities (Approx. Location)
- ◇ Known Land Survey Corner
- //// Reforestation Areas
- ===== Concentrations of Blowdown
- ===== Heron Rookery
- ===== Heron Seasonally Restricted Boundary
- ⊗ Eagle Nesting Site
- ===== Eagle Seasonally Restricted Boundary
- 40 Foot Contours
- T Tractor Logging
- Cable Logging
- Gate



Approximate Scale 1" = 1,000'

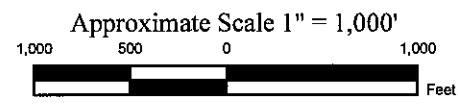




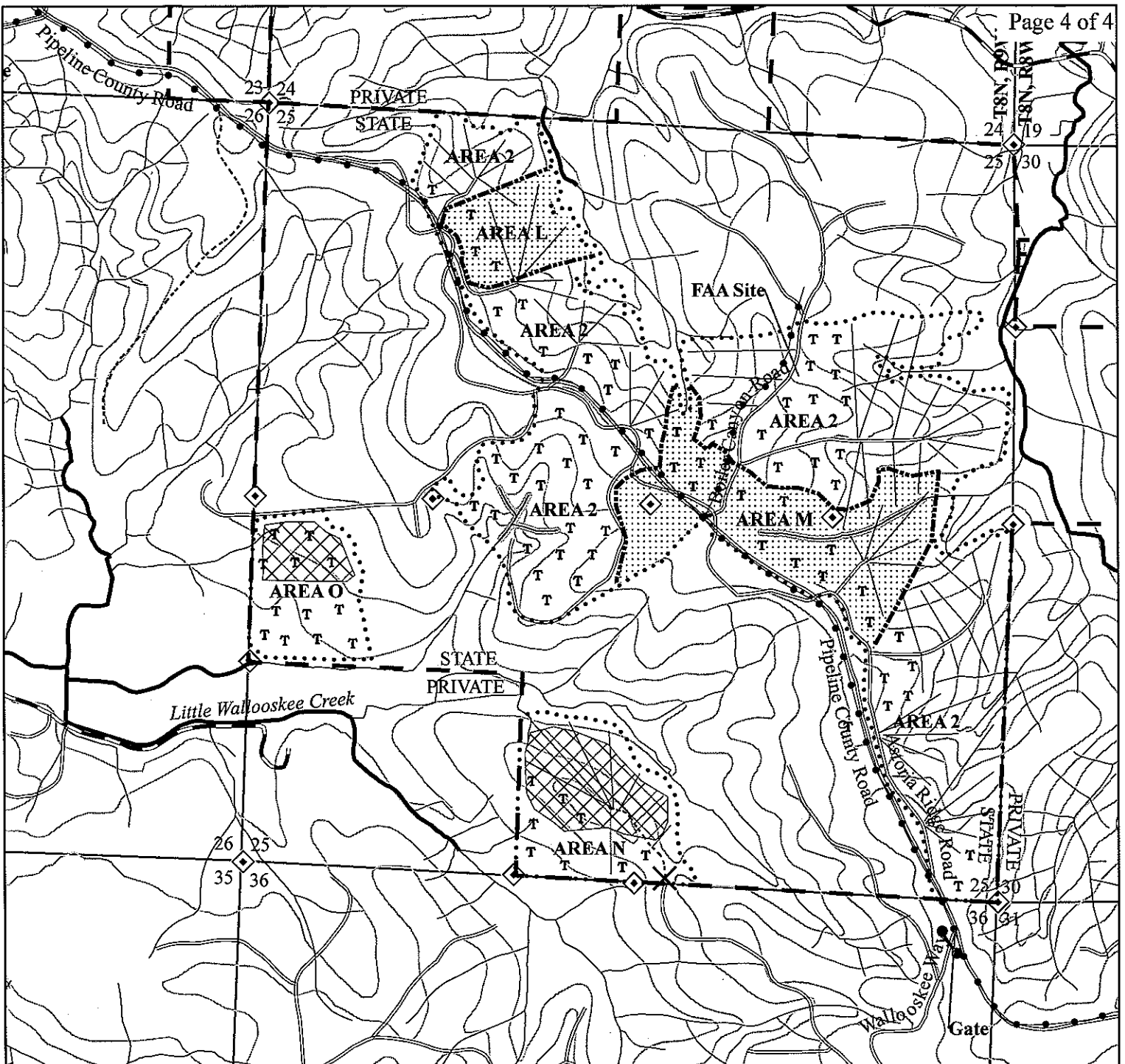
LOGGING PLAN
 OF TIMBER SALE CONTRACT NO. 341-08-93
 BLASTORIA SALVAGE
 PORTIONS OF SECTIONS 11, 14, 15, 16, 21,
 22, 23, 25, 27, AND 28, T8N, R9W, W.M.,
 CLATSOP COUNTY, OREGON

LEGEND

- Timber Sale Boundary
- Salvage Areas (Red TSB Tags)
- Salvage Areas w/ in MC
- Ownership Boundary
- ===== Paved Road
- ===== Rocked Road
- Unsurfaced Road
- Nonfish Streams
- Fish Streams
- Gate
- Intact Stream Buffers
- Early Felling
- Overhead Utilities (Approx. Location)
- Underground Utilities (Approx. Location)
- Known Land Survey Corner
- Reforestation Areas
- Concentrations of Blowdown
- Blocked Road
- 40 Foot Contours
- T Tractor Logging
- Cable Logging



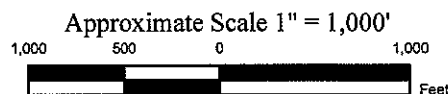
Approximate Net Acreage	
Area 1 - MC	625.5
Area 2 - MC	139.0
Area A - Salvage	197.0
Area B - Salvage	204.0
Area C - Salvage	38.0
Area D - Salvage	20.0
Area E - Salvage	46.5
Area F - Salvage	42.0
Area G - Salvage	8.5
Area H - Salvage	14.0
Area I - Salvage	25.0
Area J - Salvage	24.0
Area K - Salvage	30.0
Area L - Salvage	12.0
Area M - Salvage	38.0
Area N - Salvage	18.0
Area O - Salvage	26.5
Total =	1,508



LOGGING PLAN
 OF TIMBER SALE CONTRACT NO. 341-08-93
 BLASTORIA SALVAGE
 PORTIONS OF SECTIONS 11, 14, 15, 16, 21,
 22, 23, 25, 27, AND 28, T8N, R9W, W.M.,
 CLATSOP COUNTY, OREGON

LEGEND

- | | |
|------------------------------|--|
| Timber Sale Boundary | Intact Stream Buffers |
| Salvage Areas (Red TSB Tags) | Overhead Utilities (Approx. Location) |
| Salvage Areas w/ in MC | Underground Utilities (Approx. Location) |
| Ownership Boundary | Known Land Survey Corner |
| Paved Road | Reforestation Areas |
| Rocked Road | Concentrations of Blowdown |
| Unsurfaced Road | Blocked Road |
| Nonfish Streams | 40 Foot Contours |
| Fish Streams | Tractor Logging |
| Gate | Cable Logging |



Approximate Net Acreage	
Area 1 - MC	625.5
Area 2 - MC	139.0
Area A - Salvage	197.0
Area B - Salvage	204.0
Area C - Salvage	38.0
Area D - Salvage	20.0
Area E - Salvage	46.5
Area F - Salvage	42.0
Area G - Salvage	8.5
Area H - Salvage	14.0
Area I - Salvage	25.0
Area J - Salvage	24.0
Area K - Salvage	30.0
Area L - Salvage	12.0
Area M - Salvage	38.0
Area N - Salvage	18.0
Area O - Salvage	26.5
Total =	1,508