



"STEWARDSHIP IN FORESTRY"

Timber Sale Appraisal  
South County Salvage  
Sale 341-08-57

District: Astoria

Date: June 27, 2007

---

**Cost Summary**

	<b>Conifer</b>	<b>Hardwood</b>	<b>Total</b>
<b>Gross Timber Sales Value</b>	\$130,689.86	\$0.00	\$130,689.86
		<b>Project Work:</b>	\$0.00
		<b>Advertised Value:</b>	\$130,689.86



"STEWARDSHIP IN FORESTRY"

Timber Sale Appraisal  
 South County Salvage  
 Sale 341-08-57

District: Astoria

Date: June 27, 2007

**Timber Description**

**Location:** Sections 10, 11, 27, 28, 33, and 34, T4N, R8W, W.M, Clatsop County, Oregon and portions of Sections 3, 4, and 5, T3N, R8W, W.M., Tillamook County, Oreg

**Stand Stocking:** 20%

SpecieName	AvgDBH	Amortization (%)	Recovery (%)
Douglas - Fir	17	0	95
Western Hemlock / Fir	17	0	95
Sitka Spruce	22	0	95

Volume by Grade	2S	3S	4S	Total
Douglas - Fir	76	40	7	123
Western Hemlock / Fir	332	172	31	535
Sitka Spruce	674	65	9	748
Total	1,082	277	47	1,406



"STEWARDSHIP IN FORESTRY"

Timber Sale Appraisal  
South County Salvage  
Sale 341-08-57

District: Astoria

Date: June 27, 2007

---

**Comments:** Pond Values Used: 1st Quarter Calendar Year 2007 + Local Pond Values.

Expected Log Markets: Tillamook, Mist, Rainier, and Longview, WA

Red Cedar Stumpage Price = Pond Value minus Logging Cost  
\$858.16/MBF = \$1,150 - 291.84/MBF

Hardwoods Stumpage Price = Pond Value minus Logging Cost  
\$398.16/MBF = \$690 - 291.84/MBF

Other Costs (Profit & Risk to be added):  
100% Brand and Paint: \$1.00/MBF x 1,158 MBF = \$1,158  
Felling and Bucking: \$10.00/MBF x 1,158 MBF = \$11,580  
TOTAL Other Costs (Profit & Risk to be added) = \$12,738

Other Costs (No Profit and Risk included):  
Pile Slash at cable landings \$130/landing x 8 landings = \$1,040.  
Pile Slash in Tractor Settings 1Hr/acre @ \$87.5/hr x 20 acres = \$1,750  
TOTAL Other Costs (P&R included) = \$2,790



"STEWARDSHIP IN FORESTRY"

Timber Sale Appraisal  
South County Salvage  
Sale 341-08-57

District: Astoria

Date: June 27, 2007

---

## Logging Conditions

**Combination#: 1**  
Douglas - Fir 67.00%  
Western Hemlock / Fir 67.00%  
Sitka Spruce 67.00%

**Yarding Distance:** Medium (800 ft)      **Downhill Yarding:** No  
**Logging System:** Cable: Medium Tower >40 - <70      **Process:** Manual Delimiting  
**Tree Size:** Small / Thinning 12in (130 Bft/tree), 12-17 logs/MBF  
**Loads / Day:** 5.0      **Bd. Ft / Load:** 3,200  
**Cost / MBF:** \$216.25

**Machines:** Log Loader (A)  
Tower Yarder (Medium)

**Combination#: 2**  
Douglas - Fir 33.00%  
Western Hemlock / Fir 33.00%  
Sitka Spruce 33.00%

**Yarding Distance:** Medium (800 ft)      **Downhill Yarding:** No  
**Logging System:** Track Skidder      **Process:** Manual Falling/Delimiting  
**Tree Size:** Mature / Regen Cut (900 Bft/tree), 3-5 logs/MBF  
**Loads / Day:** 7.0      **Bd. Ft / Load:** 3,200  
**Cost / MBF:** \$153.59

**Machines:** Log Loader (B)  
Track Skidder



"STEWARDSHIP IN FORESTRY"

Timber Sale Appraisal  
 South County Salvage  
 Sale 341-08-57

District: Astoria

Date: June 27, 2007

**Logging Costs**

Operating Seasons:	1.00	Profit Risk:	18.00%
Project Costs:	\$0.00	Other Costs (P/R):	\$12,738.00
Slash Disposal:	\$0.00	Other Costs:	\$2,790.00

**Miles of Road**

Road Maintenance: \$7.01

Dirt	Rock (Contractor)	Rock (State)	Paved
0.0	0.0	0.0	0.0

**Hauling Costs**

Species	\$ / MBF	Trips/Day	MBF / Load
Douglas - Fir	\$0.00	2.0	3.5
Western Hemlock / Fir	\$0.00	3.0	3.5
Sitka Spruce	\$0.00	3.0	3.5

**Local Pond Values**

Date	Specie	Grade	Value
6/27/07	Douglas - Fir	2S	\$555.00
6/27/07	Douglas - Fir	3S	\$555.00
6/27/07	Douglas - Fir	4S	\$555.00



"STEWARDSHIP IN FORESTRY"

Timber Sale Appraisal  
 South County Salvage  
 Sale 341-08-57

District: Astoria

Date: June 27, 2007

**Logging Costs Breakdown**

Logging	Road Maint	Fire Protect	Hauling	Other P/R appl	Profit & Risk	Slash Disposal	Scaling	Other	Total
<b>Douglas - Fir</b>									
\$195.57	\$7.36	\$3.12	\$88.99	\$9.06	\$54.74	\$0.00	\$2.00	\$1.98	\$362.82
<b>Western Hemlock / Fir</b>									
\$195.57	\$7.36	\$3.12	\$59.32	\$9.06	\$49.40	\$0.00	\$2.00	\$1.98	\$327.81
<b>Sitka Spruce</b>									
\$195.57	\$7.36	\$3.12	\$59.32	\$9.06	\$49.40	\$0.00	\$2.00	\$1.98	\$327.81

Specie	Amortization	Pond Value	Stumpage	Amortized
Douglas - Fir	\$0.00	\$555.00	\$192.18	\$0.00
Western Hemlock / Fir	\$0.00	\$401.25	\$73.44	\$0.00
Sitka Spruce	\$0.00	\$418.40	\$90.59	\$0.00



"STEWARDSHIP IN FORESTRY"

Timber Sale Appraisal  
South County Salvage  
Sale 341-08-57

District: Astoria

Date: June 27, 2007

**Summary**

**Amortized**

Specie	MBF	Value	Total
Douglas - Fir	0	\$0.00	\$0.00
Western Hemlock / Fir	0	\$0.00	\$0.00
Sitka Spruce	0	\$0.00	\$0.00

**Unamortized**

Specie	MBF	Value	Total
Douglas - Fir	123	\$192.18	\$23,638.14
Western Hemlock / Fir	535	\$73.44	\$39,290.40
Sitka Spruce	748	\$90.59	\$67,761.32

**Gross Timber Sale Value**

Recovery: \$130,689.86

Prepared by: John Tillotson

Phone: 503-325-5451





7. **Statistical Analysis and Stand Summary:** A statistical analysis was not calculated. Stand Summary Reports attached.

8. **Volumes by Species and Sale Areas:** Volumes do not include "in-growth". The total net MBF volumes by species and grade are as follows:

Species	DBH	Net. Vol.	2 Saw	3 Saw	4 Saw	Sale%
W. Hemlock / True Fir	17"	535	332	172	31	38
Spruce	22"	748	674	65	9	53
Douglas-fir	17"	123	76	40	7	9
<b>Totals</b>		<b>1406</b>	<b>1082</b>	<b>277</b>	<b>47</b>	

Defect and breakage was estimated at 20 percent.

9. **Approvals:**

Prepared by: John Tillotson

Date: April 23, 2007

10. **Attachments:**

Species, Sort, Grade Reports (4 pages)  
Stand Summary Reports (4 pages)





T04N R08W S11 TA1S T04N R08W S11 TA1S  
 Twp Rge Sec Tract Type Acres Plots Sample Trees CuFt BdFt  
 04N 08W 11 SALVAGE A1S 2.00 3 9 1 W

Spp	S T	So rt	Gr ad	% Net BdFt	Bd. Ft. per Acre			Total Net MBF	Percent Net Board Foot Volume								Average Log			Logs Per /Acre
					Def%	Gross	Net		Log Scale Dia.				Log Length				Ln Ft	Bd Ft	CF/ Lf	
									4-5	6-11	12-16	17+	12-20	21-30	31-35	36-99				
S		DO	2S	87	50.1	31,167	15,542	31		34	66		3	97	38	266	2.77	58.3		
S		DO	3S	11	50.0	3,833	1,917	4		57	43			41 59	36	57	1.05	33.3		
S		DO	4S	2	50.0	583	292	1		100			43	57	21	18	0.59	16.7		
<b>S</b>	<b>Totals</b>			81	50.1	35,583	17,750	36		8	35	58	1	4 4 91	35	164	2.02	108.3		
D		DO	2S	50	52.3	3,667	1,750	4		100				100	40	105	1.39	16.7		
D		DO	3S	42	50.0	3,000	1,500	3		100				33 67	37	60	0.81	25.0		
D		DO	4S	8	50.0	500	250	1		100			33	67	26	15	0.47	16.7		
<b>D</b>	<b>Totals</b>			16	51.2	7,167	3,500	7		50	50		2	19 79	35	60	0.93	58.3		
H		DO	3S	76	50.0	833	417	1		100				100	36	50	0.69	8.3		
H		DO	4S	24	50.0	250	125	0		100			100		27	15	0.37	8.3		
<b>H</b>	<b>Totals</b>			2	50.0	1,083	542	1		100			23	77	32	32	0.56	16.7		
<b>Type Totals</b>					50.3	43,833	21,792	44		17	36	47	1	4 7 89	34	119	1.55	183.3		



TC PSTATS		PROJECT STATISTICS							PAGE	1	
		PROJECT	SCTYSALV					DATE	4/25/2007		
TWP	RGE	SC	TRACT	TYPE	ACRES	PLOTS	TREES	CuFt	BdFt		
04N	08	11	MC SALVAGE2	A2MC	74.00	37	115	1	W		
04N	08W	11	SALVAGE	A1S							
04N	08W	11	SALVAGE	A2S							
			PLOTS	TREES	TREES PER PLOT	ESTIMATED TOTAL TREES	PERCENT SAMPLE TREES				
TOTAL			37	115	3.1						
CRUISE			37	115	3.1	5,762	2.0				
DBH COUNT											
REFOREST											
COUNT											
BLANKS											
100 %											
STAND SUMMARY											
		SAMPLE TREES	TREES /ACRE	AVG DBH	BOLE LEN	REL DEN	BASAL AREA	GROSS BF/AC	NET BF/AC	GROSS CF/AC	NET CF/AC
S SPRUCE		37	24.0	21.8	70		62.1	14,211	10,112	3,096	3,096
WHEMLOCK		61	43.2	17.1	65		68.9	9,959	7,234	2,638	2,638
DOUG FIR		17	10.7	17.0	67		16.8	2,383	1,669	620	620
<b>TOTAL</b>		<b>115</b>	<b>77.9</b>	<b>18.7</b>	<b>67</b>		<b>147.8</b>	<b>26,554</b>	<b>19,014</b>	<b>6,354</b>	<b>6,354</b>
CONFIDENCE LIMITS OF THE SAMPLE											
68.1 TIMES OUT OF 100 THE VOLUME WILL BE WITHIN THE SAMPLE ERROR											
CL	68.1	COEFF	SAMPLE TREES - BF				# OF TREES REQ.		INF. POP.		
SD:	1.0	VAR.%	S.E.%	LOW	AVG	HIGH	5	10	15		
S SPRUCE		164.4	27.0	277	380	483					
WHEMLOCK		61.7	7.9	136	148	159					
DOUG FIR		63.0	15.7	117	139	161					
<b>TOTAL</b>		<b>169.7</b>	<b>15.8</b>	<b>186</b>	<b>221</b>	<b>256</b>	<b>1,149</b>	<b>287</b>	<b>128</b>		
CL	68.1	COEFF	TREES/ACRE				# OF PLOTS REQ.		INF. POP.		
SD:	1.0	VAR.%	S.E.%	LOW	AVG	HIGH	5	10	15		
S SPRUCE		175.2	28.8	17	24	31					
WHEMLOCK		115.2	18.9	35	43	51					
DOUG FIR		199.0	32.7	7	11	14					
<b>TOTAL</b>		<b>77.7</b>	<b>12.8</b>	<b>68</b>	<b>78</b>	<b>88</b>	<b>241</b>	<b>60</b>	<b>27</b>		
CL	68.1	COEFF	BASAL AREA/ACRE				# OF PLOTS REQ.		INF. POP.		
SD:	1.0	VAR.%	S.E.%	LOW	AVG	HIGH	5	10	15		
S SPRUCE		225.3	37.0	39	62	85					
WHEMLOCK		127.7	21.0	54	69	83					
DOUG FIR		196.8	32.3	11	17	22					
<b>TOTAL</b>		<b>100.5</b>	<b>16.5</b>	<b>123</b>	<b>148</b>	<b>172</b>	<b>404</b>	<b>101</b>	<b>45</b>		
CL	68.1	COEFF	NET BF/ACRE				# OF PLOTS REQ.		INF. POP.		
SD:	1.0	VAR.%	S.E.%	LOW	AVG	HIGH	5	10	15		
S SPRUCE		332.2	54.6	4,594	10,112	15,630					
WHEMLOCK		139.5	22.9	5,576	7,234	8,892					
DOUG FIR		230.5	37.9	1,037	1,669	2,300					
<b>TOTAL</b>		<b>176.0</b>	<b>28.9</b>	<b>13,517</b>	<b>19,014</b>	<b>24,512</b>	<b>1,237</b>	<b>309</b>	<b>137</b>		

TC TSTATS		STATISTICS							PAGE 1	
		PROJECT		SCTYSALV			DATE 4/25/2007			
TWP	RGE	SECT	TRACT	TYPE	ACRES	PLOTS	TREES	CuFt	BdFt	
04N	08W	11	MC SALVAGE2	A2MC	56.00	17	53	1	W	
		PLOTS	TREES	TREES PER PLOT	ESTIMATED TOTAL TREES	PERCENT SAMPLE TREES				
TOTAL		17	53	3.1						
CRUISE		17	53	3.1	4,365	1.2				
DBH COUNT										
REFOREST										
COUNT										
BLANKS										
100 %										
STAND SUMMARY										
	SAMPLE TREES	TREES /ACRE	AVG DBH	BOLE LEN	REL DEN	BASAL AREA	GROSS BF/AC	NET BF/AC	GROSS CF/AC	NET CF/AC
WHEMLOCK	30	44.1	17.1	65		70.6	10,206	8,094	2,703	2,703
S SPRUCE	16	23.5	21.6	69		60.1	13,618	10,800	2,972	2,972
DOUG FIR	7	10.3	16.9	66		16.1	2,250	1,765	585	585
<b>TOTAL</b>	<b>53</b>	<b>77.9</b>	<b>18.6</b>	<b>66</b>		<b>146.8</b>	<b>26,074</b>	<b>20,659</b>	<b>6,260</b>	<b>6,260</b>
CONFIDENCE LIMITS OF THE SAMPLE										
68.1 TIMES OUT OF 100 THE VOLUME WILL BE WITHIN THE SAMPLE ERROR										
CL: 68.1 %	COEFF	SAMPLE TREES - BF					# OF TREES REQ.		INF. POP.	
SD: 1.0	VAR.%	S.E.%	LOW	AVG	HIGH	5	10	15		
WHEMLOCK	55.6	10.3	165	183	202					
S SPRUCE	170.5	44.0	257	459	661					
DOUG FIR	65.7	26.7	126	171	217					
<b>TOTAL</b>	<b>168.9</b>	<b>23.2</b>	<b>204</b>	<b>265</b>	<b>327</b>	<b>1,139</b>	<b>285</b>	<b>127</b>		
CL: 68.1 %	COEFF	TREES/ACRE					# OF PLOTS REQ.		INF. POP.	
SD: 1.0	VAR.%	S.E.%	LOW	AVG	HIGH	5	10	15		
WHEMLOCK	81.5	20.3	35	44	53					
S SPRUCE	147.8	36.9	15	24	32					
DOUG FIR	173.0	43.2	6	10	15					
<b>TOTAL</b>	<b>42.3</b>	<b>10.6</b>	<b>70</b>	<b>78</b>	<b>86</b>	<b>76</b>	<b>19</b>	<b>8</b>		
CL: 68.1 %	COEFF	BASAL AREA/ACRE					# OF PLOTS REQ.		INF. POP.	
SD: 1.0	VAR.%	S.E.%	LOW	AVG	HIGH	5	10	15		
WHEMLOCK	93.7	23.4	54	71	87					
S SPRUCE	197.2	49.2	30	60	90					
DOUG FIR	172.1	43.0	9	16	23					
<b>TOTAL</b>	<b>71.4</b>	<b>17.8</b>	<b>121</b>	<b>147</b>	<b>173</b>	<b>216</b>	<b>54</b>	<b>24</b>		
CL: 68.1 %	COEFF	NET BF/ACRE					# OF PLOTS REQ.		INF. POP.	
SD: 1.0	VAR.%	S.E.%	LOW	AVG	HIGH	5	10	15		
WHEMLOCK	92.0	23.0	6,234	8,094	9,955					
S SPRUCE	272.2	68.0	3,458	10,800	18,142					
DOUG FIR	185.7	46.4	946	1,765	2,583					
<b>TOTAL</b>	<b>131.8</b>	<b>32.9</b>	<b>13,858</b>	<b>20,659</b>	<b>27,460</b>	<b>737</b>	<b>184</b>	<b>82</b>		

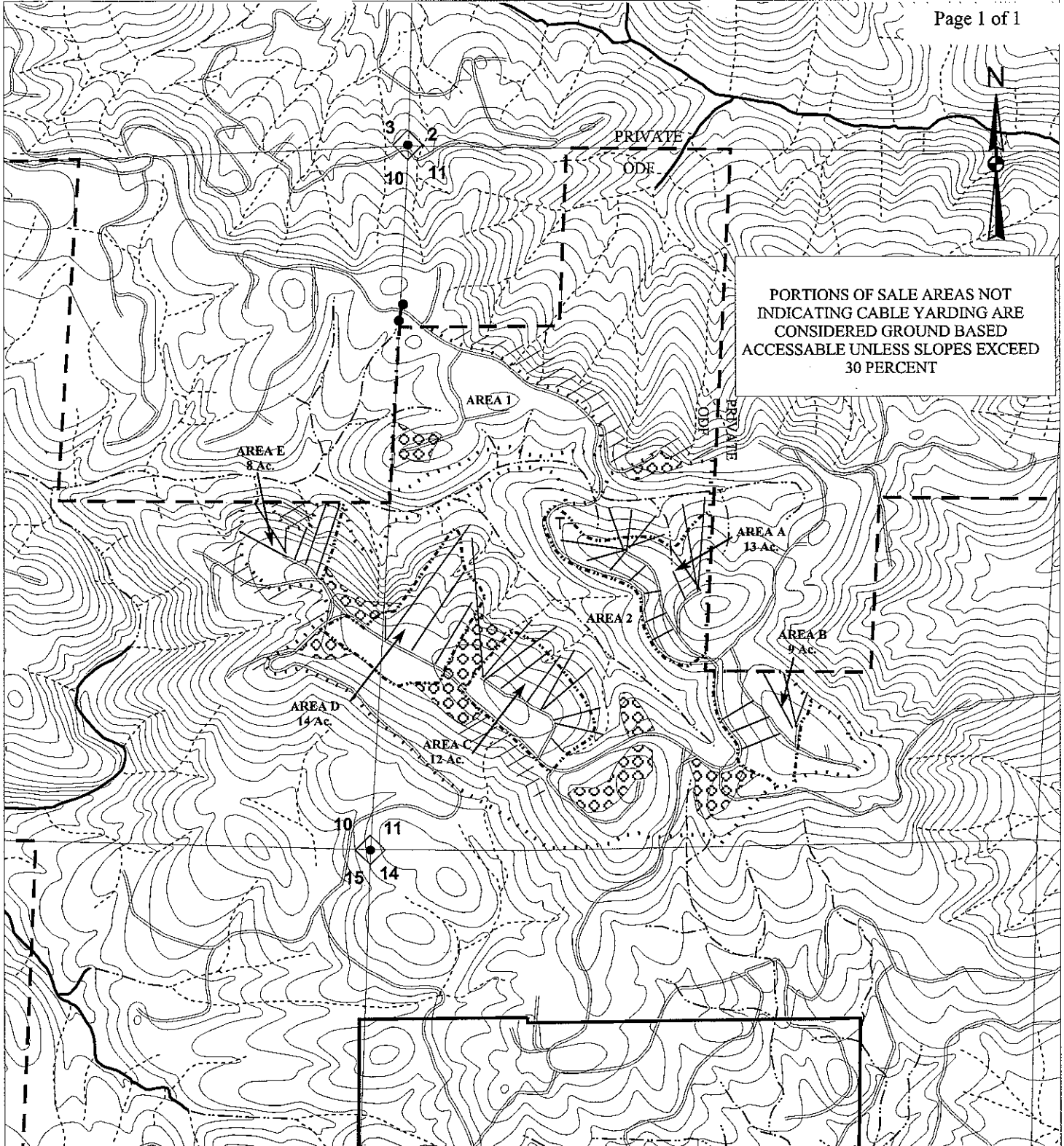
TC TSTATS		STATISTICS							PAGE 1	
		PROJECT		SCTYSALV			DATE 4/25/2007			
TWP	RGE	SECT	TRACT	TYPE	ACRES	PLOTS	TREES	CuFt	BdFt	
04N	08W	11	SALVAGE	A1S	2.00	3	9	1	W	
		PLOTS	TREES	TREES PER PLOT	ESTIMATED TOTAL TREES	PERCENT SAMPLE TREES				
TOTAL		3	9	3.0						
CRUISE		3	9	3.0	150	6.0				
DBH COUNT										
REFOREST COUNT										
BLANKS										
100 %										
<b>STAND SUMMARY</b>										
	SAMPLE TREES	TREES /ACRE	AVG DBH	BOLE LEN	REL DEN	BASAL AREA	GROSS BF/AC	NET BF/AC	GROSS CF/AC	NET CF/AC
S SPRUCE	5	41.7	24.2	92		133.3	35,583	17,750	7,558	7,558
DOUG FIR	3	25.0	17.7	84		42.8	7,167	3,500	1,883	1,883
WHEMLOCK	1	8.3	12.3	65		6.9	1,083	542	292	292
<b>TOTAL</b>	<b>9</b>	<b>75.0</b>	<b>21.1</b>	<b>86</b>		<b>182.9</b>	<b>43,833</b>	<b>21,792</b>	<b>9,733</b>	<b>9,733</b>
CONFIDENCE LIMITS OF THE SAMPLE										
68.1 TIMES OUT OF 100 THE VOLUME WILL BE WITHIN THE SAMPLE ERROR										
CL: 68.1 %	COEFF	SAMPLE TREES - BF					# OF TREES REQ.		INF. POP.	
SD: 1.0	VAR.%	S.E.%	LOW	AVG	HIGH	5	10	15		
S SPRUCE	119.9	59.6	172	426	680					
DOUG FIR	28.3	19.6	113	140	167					
WHEMLOCK										
<b>TOTAL</b>	<b>136.4</b>	<b>48.1</b>	<b>151</b>	<b>291</b>	<b>430</b>	<b>834</b>	<b>209</b>	<b>93</b>		
CL: 68.1 %	COEFF	TREES/ACRE					# OF PLOTS REQ.		INF. POP.	
SD: 1.0	VAR.%	S.E.%	LOW	AVG	HIGH	5	10	15		
S SPRUCE	69.3	47.9	22	42	62					
DOUG FIR	100.0	69.2	8	25	42					
WHEMLOCK	173.2	119.8		8	18					
<b>TOTAL</b>	<b>57.7</b>	<b>39.9</b>	<b>45</b>	<b>75</b>	<b>105</b>	<b>191</b>	<b>48</b>	<b>21</b>		
CL: 68.1 %	COEFF	BASAL AREA/ACRE					# OF PLOTS REQ.		INF. POP.	
SD: 1.0	VAR.%	S.E.%	LOW	AVG	HIGH	5	10	15		
S SPRUCE	62.0	42.9	76	133	190					
DOUG FIR	93.4	64.6	15	43	70					
WHEMLOCK	173.2	119.8		7	15					
<b>TOTAL</b>	<b>18.7</b>	<b>12.9</b>	<b>159</b>	<b>183</b>	<b>207</b>	<b>20</b>	<b>5</b>	<b>2</b>		
CL: 68.1 %	COEFF	NET BF/ACRE					# OF PLOTS REQ.		INF. POP.	
SD: 1.0	VAR.%	S.E.%	LOW	AVG	HIGH	5	10	15		
S SPRUCE	85.3	59.0	7,276	17,750	28,224					
DOUG FIR	88.4	61.2	1,359	3,500	5,641					
WHEMLOCK	173.2	119.8		542	1,191					
<b>TOTAL</b>	<b>52.2</b>	<b>36.1</b>	<b>13,921</b>	<b>21,792</b>	<b>29,662</b>	<b>157</b>	<b>39</b>	<b>17</b>		



TC TSTATS		STATISTICS							PAGE	1
		PROJECT	SCTYSALV				DATE	4/25/2007		
TWP	RGE	SECT	TRACT	TYPE	ACRES	PLOTS	TREES	CuFt	BdFt	
04N	08W	11	SALVAGE	A2S	16.00	17	53	1	W	
		PLOTS	TREES	TREES PER PLOT	ESTIMATED TOTAL TREES	PERCENT SAMPLE TREES				
TOTAL		17	53	3.1						
CRUISE		17	53	3.1	1,247	4.2				
DBH COUNT										
REFOREST COUNT										
BLANKS										
100 %										
STAND SUMMARY										
	SAMPLE TREES	TREES /ACRE	AVG DBH	BOLE LEN	REL DEN	BASAL AREA	GROSS BF/AC	NET BF/AC	GROSS CF/AC	NET CF/AC
WHEMLOCK	30	44.1	17.1	65		70.6	10,206	5,059	2,703	2,703
S SPRUCE	16	23.5	21.6	69		60.1	13,618	6,750	2,972	2,972
DOUG FIR	7	10.3	16.9	66		16.1	2,250	1,103	585	585
<b>TOTAL</b>	<b>53</b>	<b>77.9</b>	<b>18.6</b>	<b>66</b>		<b>146.8</b>	<b>26,074</b>	<b>12,912</b>	<b>6,260</b>	<b>6,260</b>
CONFIDENCE LIMITS OF THE SAMPLE										
68.1 TIMES OUT OF 100 THE VOLUME WILL BE WITHIN THE SAMPLE ERROR										
CL: 68.1 %	COEFF	SAMPLE TREES - BF					# OF TREES REQ.		INF. POP.	
SD: 1.0	VAR.%	S.E.%	LOW	AVG	HIGH	5	10	15		
WHEMLOCK	55.6	10.3	103	115	127					
S SPRUCE	170.5	44.0	161	287	413					
DOUG FIR	65.7	26.7	79	107	136					
<b>TOTAL</b>	<b>168.9</b>	<b>23.2</b>	<b>127</b>	<b>166</b>	<b>204</b>	<b>1,139</b>	<b>285</b>	<b>127</b>		
CL: 68.1 %	COEFF	TREES/ACRE					# OF PLOTS REQ.		INF. POP.	
SD: 1.0	VAR.%	S.E.%	LOW	AVG	HIGH	5	10	15		
WHEMLOCK	81.5	20.3	35	44	53					
S SPRUCE	147.8	36.9	15	24	32					
DOUG FIR	173.0	43.2	6	10	15					
<b>TOTAL</b>	<b>42.3</b>	<b>10.6</b>	<b>70</b>	<b>78</b>	<b>86</b>	<b>76</b>	<b>19</b>	<b>8</b>		
CL: 68.1 %	COEFF	BASAL AREA/ACRE					# OF PLOTS REQ.		INF. POP.	
SD: 1.0	VAR.%	S.E.%	LOW	AVG	HIGH	5	10	15		
WHEMLOCK	93.7	23.4	54	71	87					
S SPRUCE	197.2	49.2	30	60	90					
DOUG FIR	172.1	43.0	9	16	23					
<b>TOTAL</b>	<b>71.4</b>	<b>17.8</b>	<b>121</b>	<b>147</b>	<b>173</b>	<b>216</b>	<b>54</b>	<b>24</b>		
CL: 68.1 %	COEFF	NET BF/ACRE					# OF PLOTS REQ.		INF. POP.	
SD: 1.0	VAR.%	S.E.%	LOW	AVG	HIGH	5	10	15		
WHEMLOCK	92.0	23.0	3,896	5,059	6,222					
S SPRUCE	272.2	68.0	2,161	6,750	11,339					
DOUG FIR	185.7	46.4	591	1,103	1,615					
<b>TOTAL</b>	<b>131.8</b>	<b>32.9</b>	<b>8,661</b>	<b>12,912</b>	<b>17,163</b>	<b>737</b>	<b>184</b>	<b>82</b>		



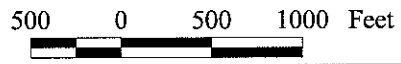
PORTIONS OF SALE AREAS NOT INDICATING CABLE YARDING ARE CONSIDERED GROUND BASED ACCESSIBLE UNLESS SLOPES EXCEED 30 PERCENT



**Logging Plan**

OF TIMBER SALE CONTRACT NO. 341-08-57  
SOUTH COUNTY SALVAGE  
PORTIONS OF SECTIONS 10, 11, 27, 28, 33, &  
34, T4N, R8W, CLATSOP COUNTY AND  
PORTIONS OF SECTIONS  
3, 4, & 5, T3N, R8W, W.M., TILLAMOOK COUNTY,  
OREGON

APPROXIMATE SCALE 1"=1,000'



**LEGEND**

- Timber Sale Boundary
- Ownership Boundary
- Reforestation Area
- Surface Road
- Logging Plan
- Area Boundary
- Concentrations of Windthrow
- GTRA
- Streams
- Fish
- Nonfish
- Unknown