

- ⊗ Rock source
- Ⓢ Stock pile
- Ⓜ Waste area
- ⌵ Bridge
- ⌵ Gate
- Ⓜ Helicopter landing zone
- ⊠ Survey corner
- Ⓧ Domestic water supply intake
- ▨ Buffer
- - - Area boundary
- Sale boundary
- Ownership boundary
- Perennial Type-F stream
- - - Perennial Type-N stream
- == Unsurfaced road
- == Surfaced road
- State/Federal highway
- Legacy road
- xxx Blocked road
- - Road construction
- County road
- o-o-o OHV trail
- Non-motorized trail
- ⊕ RailRoad Tracks

EXHIBIT A
Timber Sale Contract No. 341-07-57
Sibley Arch
 Portions of Sections 18, 19 and 30,
 T3N, R8W, and portions of
 Sections 23, 24, 25, 26, 27,
 T3N, R9W, W. M.
 Tillamook County, Oregon

Area	Type of Operation	Gross	Net
1	Modified Clearcut	100	100
2	Modified Clearcut	45	45
3	Retention Cut	119	114
4	Retention Cut	296	260
5	Partial Cut	44	42
Total		604	561



Tillamook District GIS
 December 1, 2006
 This product is for informational use and
 may not have been prepared for, or suitable
 for legal, engineering, or surveying purposes.



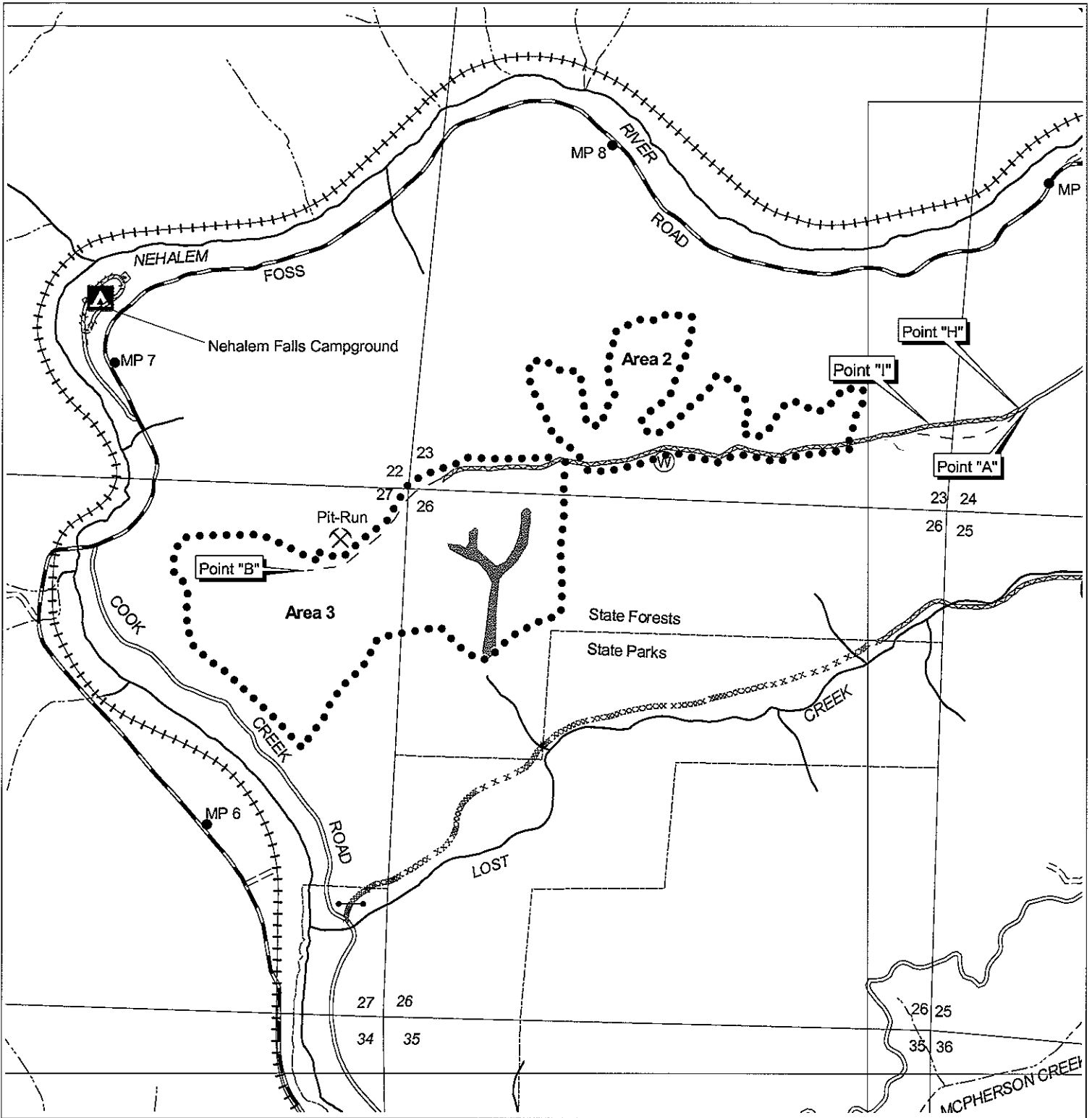


EXHIBIT A
 Timber Sale Contract No. 341-07-57
 Sibley Arch
 Portions of Sections 18, 19 and 30,
 T3N, R8W, and portions of
 Sections 23, 24, 25, 26, 27,
 T3N, R9W, W. M.
 Tillamook County, Oregon

Area	Type of Operation	Gross	Net Acres
1	Modified Clearcut	100	100
2	Modified Clearcut	45	45
3	Retention Cut	119	114
4	Retention Cut	296	260
5	Partial Cut	44	42
Total		604	561

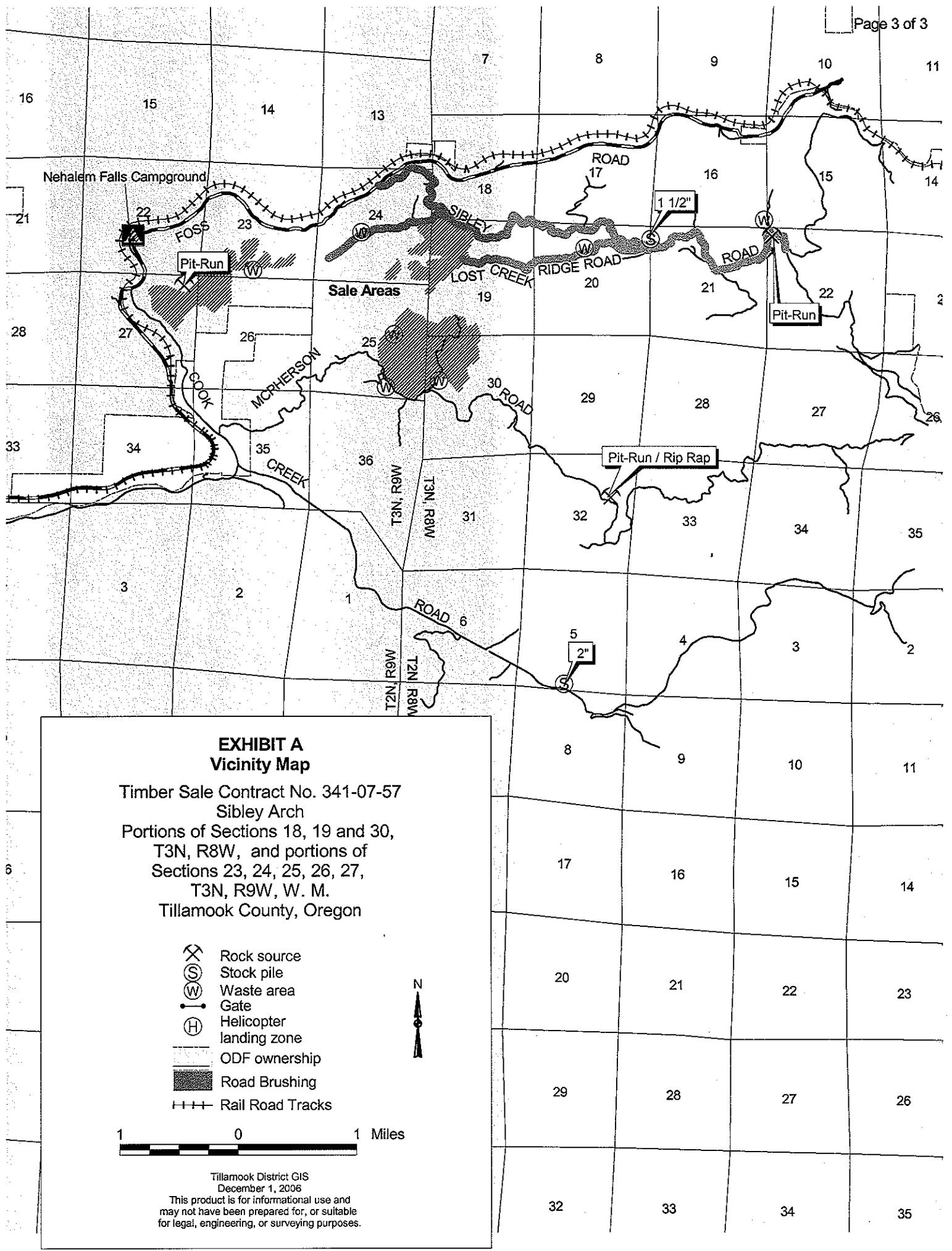
1000 0 1000 Feet



Tillamook District GIS
 December 1, 2006

This product is for informational use and may not have been prepared for, or suitable for legal, engineering, or surveying purposes.





**EXHIBIT A
Vicinity Map**

Timber Sale Contract No. 341-07-57
 Sibley Arch
 Portions of Sections 18, 19 and 30,
 T3N, R8W, and portions of
 Sections 23, 24, 25, 26, 27,
 T3N, R9W, W. M.
 Tillamook County, Oregon

- Rock source
- Stock pile
- Waste area
- Gate
- Helicopter landing zone
- ODF ownership
- Road Brushing
- Rail Road Tracks



Tillamook District GIS
 December 1, 2006
 This product is for informational use and
 may not have been prepared for, or suitable
 for legal, engineering, or surveying purposes.