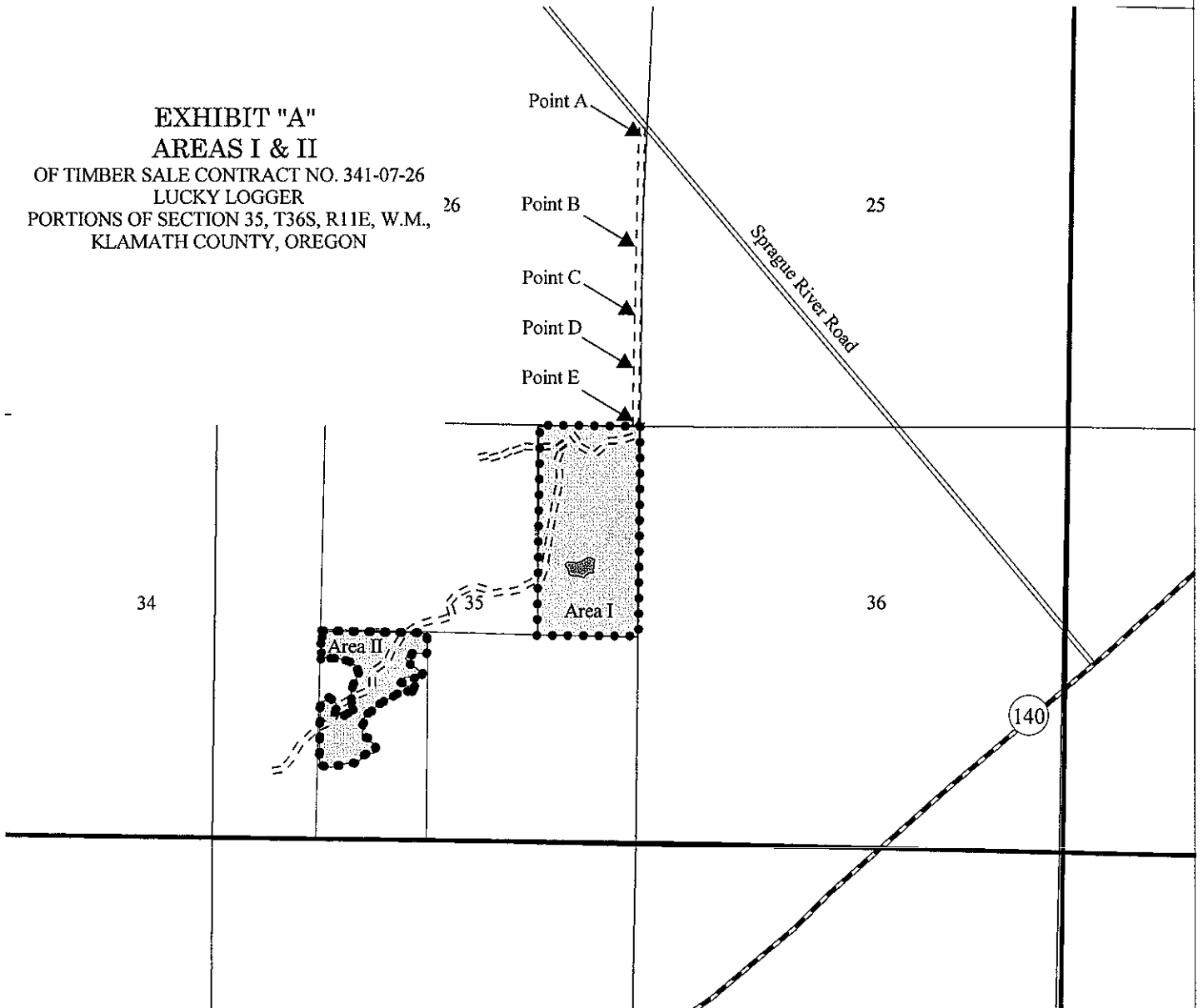
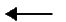


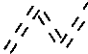


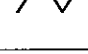


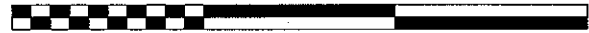
**EXHIBIT "A"**  
**AREAS I & II**  
OF TIMBER SALE CONTRACT NO. 341-07-26  
LUCKY LOGGER  
PORTIONS OF SECTION 35, T36S, R11E, W.M., 26  
KLAMATH COUNTY, OREGON



**LEGEND**

-  Project Points
-  State Highway
-  Surfaced Road
-  Unsurfaced Road
-  Timber Sale Boundary
-  Timber Sale Area
-  Section Line

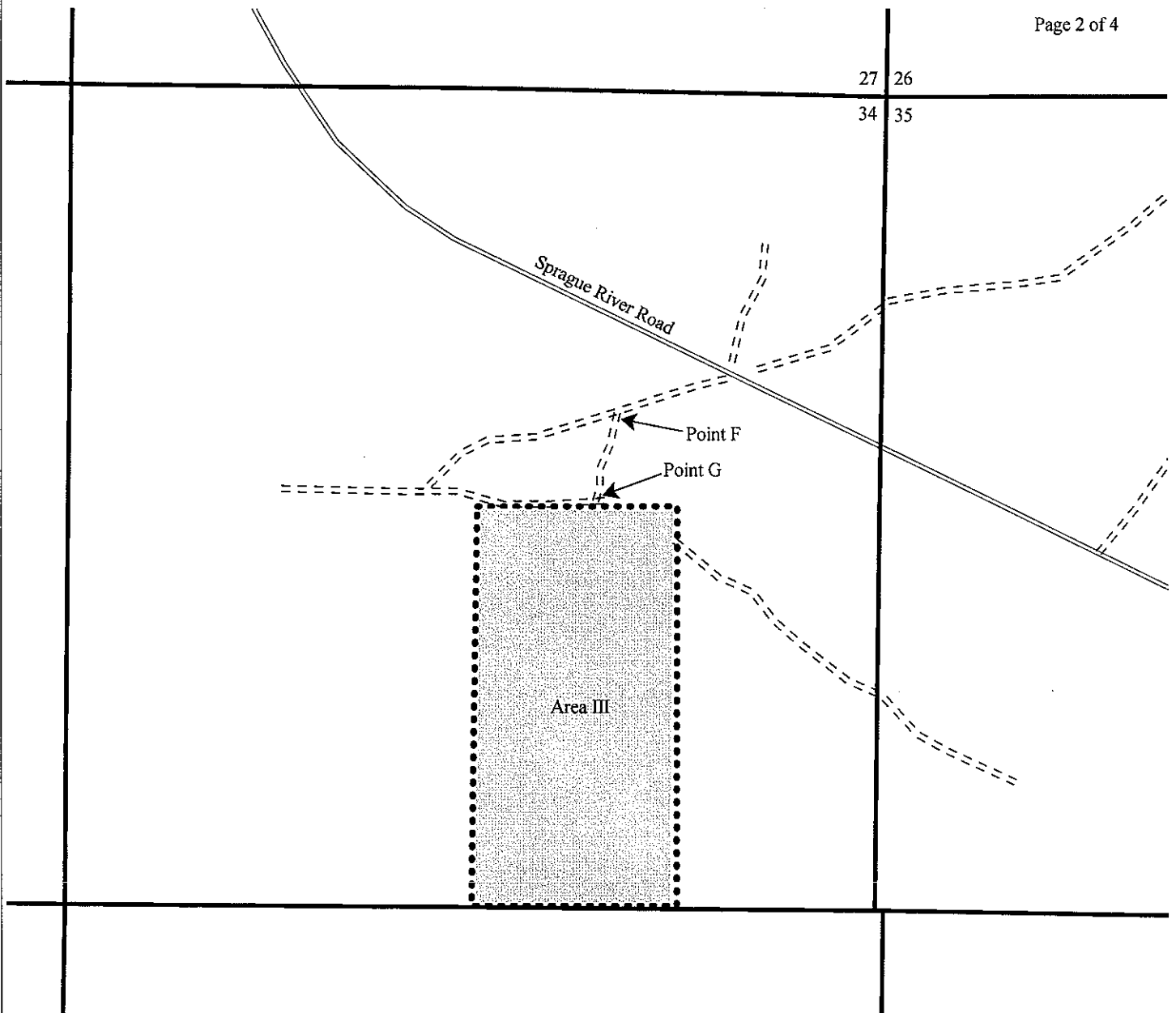
2000 0 2000 4000 Feet



Scale  
1 : 24000  
1 inch = 2000 feet



AREA I: 76 ACRES (includes 1.4 acre exclusion)  
AREA II: 28 ACRES  
TOTAL: 104 ACRES




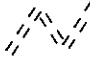


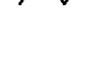
**EXHIBIT "A"**  
**AREA III**

OF TIMBER SALE CONTRACT NO. 341-07-26  
 LUCKY LOGGER  
 PORTIONS OF SECTION 34, T34S, R8E, W.M.,  
 KLAMATH COUNTY, OREGON

AREA III: 76 ACRES



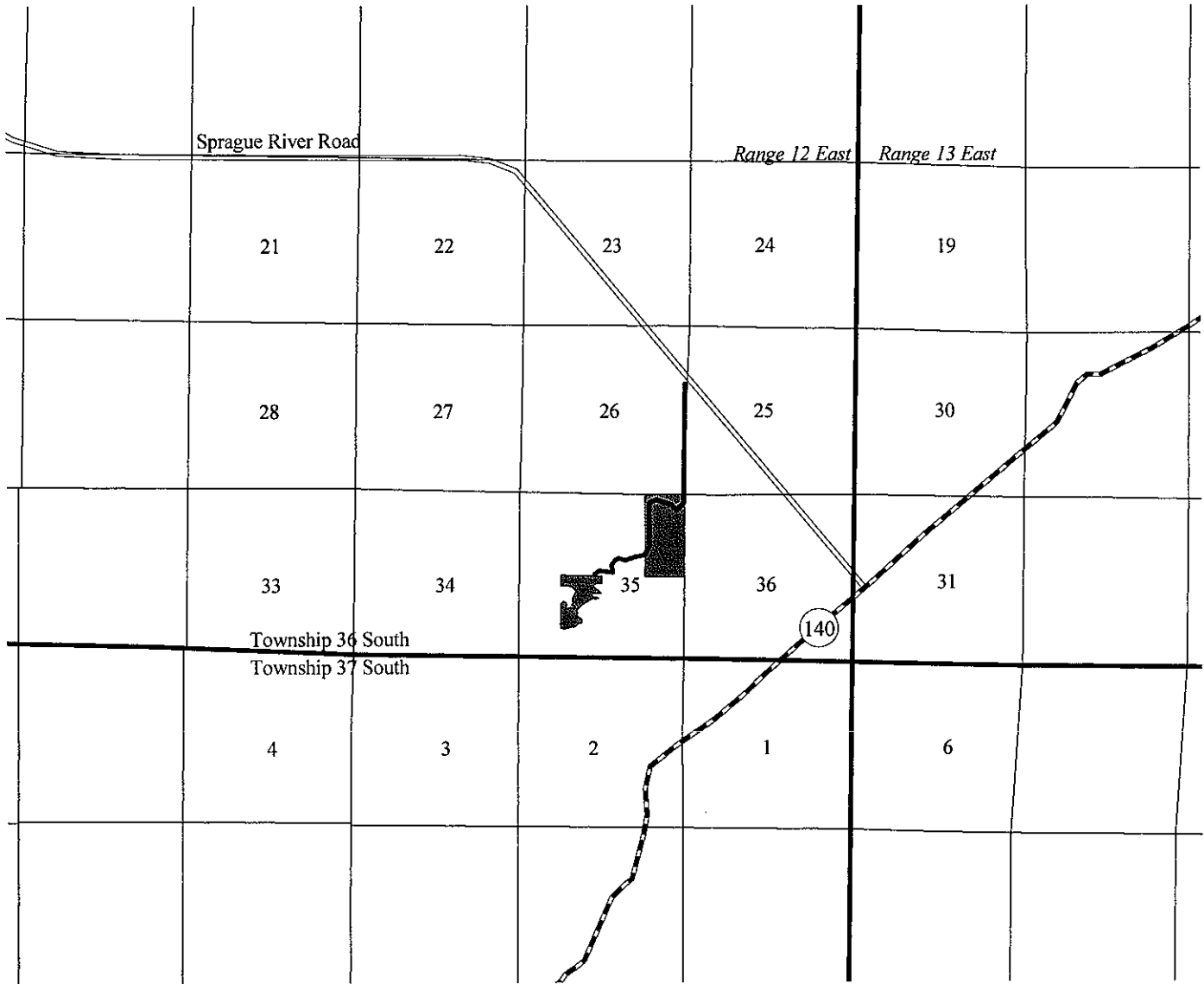
**LEGEND**

-  Surfaced Road
-  Unsurfaced Road
-  Timber Sale Boundary
-  Timber Sale Area
-  Section Line









Scale  
 1 : 12,000  
 1 inch = 1000 feet

**EXHIBIT "A"**  
VICINITY MAP OF AREAS I & II  
OF TIMBER SALE CONTRACT NO. 341-07-26  
LUCKY LOGGER  
PORTIONS OF SECTION 35, T36S, R11E, W.M.,  
KLAMATH COUNTY, OREGON



**LEGEND**

-  Sprague River Road
-  Haul Route
-  Highway 140
-  Timber Sale Area
-  Section Lines
-  Project Points



Scale  
1 : 63,360  
1 inch = 1 mile





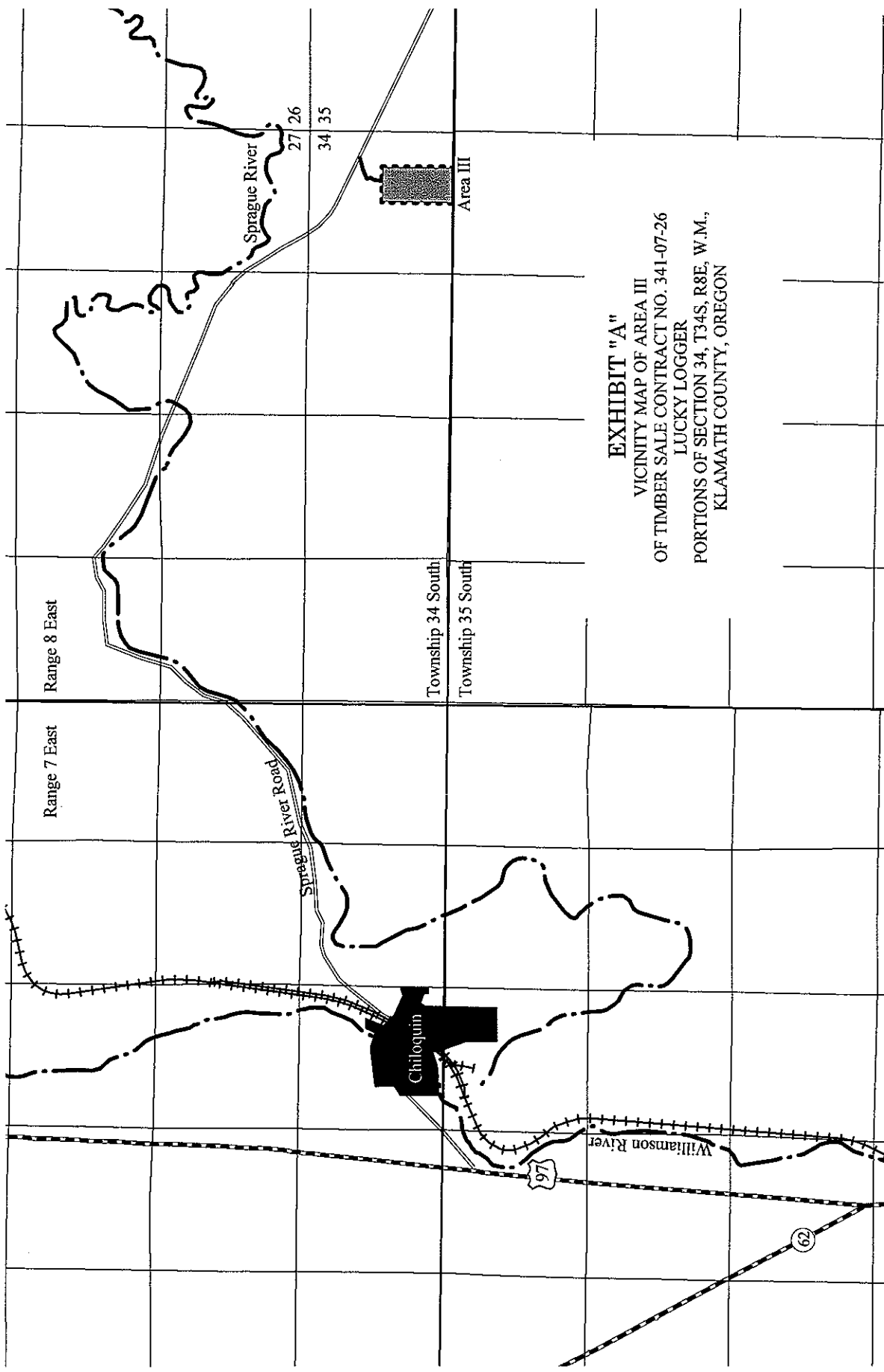
2 Miles



Scale

1 : 63,360

1 inch = 1 mile



**EXHIBIT "A"**  
VICINITY MAP OF AREA III  
OF TIMBER SALE CONTRACT NO. 341-07-26  
LUCKY LOGGER  
PORTIONS OF SECTION 34, T34S, R8E, W.M.,  
KLAMATH COUNTY, OREGON

LEGEND

- Sprague River Road
- Haul Route
- Railroad
- City of Chiloquin
- Timber Sale Area
- Section Lines
- Type F Stream