



OREGON DEPARTMENT OF FORESTRY CRUISE REPORT *Westwood*

1. Type of Sale

Modified clearcut, Retention cut and Partial cut– Recovery

2. Legal Description

Portions of Sections 27, 28, 29, 30, 31, 32, and 33, T3N, R8W, W.M., Tillamook County, Oregon.

3. Sale Acreage

	ACRES		
	<u>Sale</u>	<u>Total</u>	<u>Net</u>
Area 1A (Retention cut)	10	7	7
Area 1B (Modified Clearcut)	16	13	13
Area 2 (Retention cut)	73	64	64
Area 3 (Partial cut)	20	15	15
Area 4 (Retention cut)	143	98	98
Area 5 (Partial cut)	65	61	52
Total	327	258	249

Sale Acres: Area within the Timber Sale Boundary signs.

Total Acres: Sale acres, plus green tree retention areas outside the timber sale boundary; less roads and riparian areas classified as Special Stewardship in LMCS inside the sale boundary.

Net acres: Used for calculating the advertised volume.

Clearcut/Retention cut - Sale acres, less green tree retention, roads, and riparian areas classified as Special Stewardship in LMCS inside the sale boundary.

Partial Cut - Sale acres minus areas of low stocking, hardwoods, roads, and riparian areas classified as Special Stewardship in LMCS inside the sale boundary.

4. Cruising Procedures

A. Cruise Method

A total of 81 variable radius plots were taken across the 5 sale areas. Eight plots were used to evaluate Areas 1a and 1b, 22 plots in Area 2, 11 plots in Area 3, 26 plots in Area 4 and 14 plots in Area 5. A square grid of 300' between plots and lines was used in Areas 1 and 2. Area 3 was cruised by transects with 132 feet between plots. Areas 4 and 5 were cruised on a rectangular grid with lines established approximately 700 feet apart and plots spaced 250' apart. All

conifers 8 inches DBH and greater and all hardwoods 10 inches DBH and greater were measured and graded on all plots.

B. Plot size

A basal area factor of 34 was used. The point of observation was at 4.5 feet.

C. Grading System

All trees were graded according to Columbia River Log Scaling and Grading Rules. Douglas-fir trees were measured to a 6 inch outside-bark diameter, hemlock trees were measured to a 7 inch outside-bark diameter, and hardwood trees were measured to an 9 inch outside-bark diameter, favoring 40-foot lengths. All heights were measured to the nearest foot. All diameters were measured at a height of 4.5 feet to the nearest 1-inch. Conifers less than 20 board feet and hardwoods less than 30 board feet were not recorded.

5. Computation Procedure

Volumes for grade trees were computed using the Atterbury SuperA.C.E.98 program. Residual and surplus conifer trees were designated and their volumes were expanded the for the sale areas. The appraisal volume is the actual volume to be removed and does not include reserved trees located within the clearcut, retention cut or partial cut.

6. Hidden Defect and Breakage

A 5% deduction of volume was applied to the conifer and a 10% deduction of volume was applied to the hardwood to account for hidden defect and breakage.

7. Timber Description

Areas 1, 2, and 3 were burned in the 1933 Tillamook Fire and all of the areas except the SW corner of Area 2 were burned in the 1945 Wilson River Fire. Douglas-fir was planted and hemlock, spruce, cedar and hardwoods naturally regenerated on the sale areas. The alder was aerially sprayed in the 1970's which has resulted in short boles and multiple tops. The current stand condition is closed-single canopy and the Douglas-fir has moderate to severe symptoms of Swiss needle cast.

8. Cruiser Names/Dates

Bond, Winslow, Stumpf, and Wells Spring/2004.

9. Revenue Distribution

FDF: 100%	Tax Code: 56-1 – 100%
Deed Number: 35, 70	59% Rehabilitation Obligated

10. **Attachments**

Stand Tables

Volume Summary

Logging Plan

Stand Table Summary

Area 1A

Project WESTWOO

T03N R08W S30 T0131

T03N R08W S30 T0131

Twp Rge Sec Tract
03N 08W 30 0100

Type Acres Plots Sample Trees
0131 1.00 8 42

Page: 1
Date: 11/08/2011
Time: 9:43:32AM

S Spc	T	Sample			Av	Trees/ Acre	BA/ Acre	Logs Acre	Average Log		Net Tons/ Acre	Net Cu.Ft. Acre	Net Bd.Ft. Acre	Totals		
		DBH	Trees	16'	Tot				Ht	Net				Net	Tons	Cunits
DF		8	2	78	37	31.199	10.89	31.20	4.1	20.0	3.68	129	624	4	1	1
DF		9	1	80	55	9.620	4.25	9.62	8.1	30.0	2.22	78	289	2	1	0
DF		10	3	82	56	27.061	15.14	27.06	10.3	37.1	7.98	280	1,005	8	3	1
DF		11	4	80	67	33.251	21.78	44.09	10.7	35.4	13.45	472	1,560	13	5	2
DF		13	4	85	71	18.443	17.00	23.05	17.0	56.0	11.20	393	1,291	11	4	1
DF		14	5	82	65	22.414	23.64	36.58	14.9	42.8	15.54	545	1,565	16	5	2
DF		15	6	83	71	24.675	30.28	43.94	17.6	51.6	22.07	772	2,266	22	8	2
DF		16	2	81	68	9.382	12.66	18.76	16.5	51.5	8.80	309	966	9	3	1
DF		17	4	81	81	14.227	21.62	28.45	20.8	70.1	16.85	591	1,996	17	6	2
DF		18	2	80	75	7.474	13.28	14.95	25.5	72.5	10.88	381	1,084	11	4	1
DF		Totals	33	81	62	197.747	170.55	277.70	14.2	45.5	112.67	3,950	12,645	113	40	13
DL		16	2	87	82	6.088	8.50	12.18	19.9	70.0	6.65	242	852	7	2	1
DL		17	1	80	79	4.472	6.64	8.94	22.9	70.0	5.64	205	626	6	2	1
DL		18	1	87	72	2.405	4.25	4.81	24.1	85.0	3.19	116	409	3	1	0
DL		19	2	82	65	5.716	10.89	9.27	29.7	70.0	7.58	276	649	8	3	1
DL		22	1	78	77	2.511	6.81	5.02	42.2	110.0	5.80	212	552	6	2	1
DL		Totals	7	83	75	21.191	37.09	40.22	26.1	76.8	28.87	1,051	3,089	29	11	3
RA		14	1	79	50	3.976	4.25	3.98	19.9	50.0	2.17	79	199	2	1	0
RA		17	1	80	25	2.696	4.25	2.70	19.3	40.0	1.43	52	108	1	1	0
RA		Totals	2	79	40	6.672	8.50	6.67	19.6	46.0	3.60	131	307	4	1	0
Totals			42	81	63	225.610	216.14	324.60	15.8	49.4	145.13	5132	16,040	145	51	16

Leave

Stand Table Summary

Area 1B

Project WESTWOO

T03N R08W S30 T0121

T03N R08W S30 T0121

Twp Rge Sec Tract
03N 08W 30 0100

Type Acres Plots Sample Trees
0121 1.00 8 42

Page: 1
Date: 11/08/201
Time: 9:38:41AM

S Spc	T	Av			Trees/ Acre	BA/ Acre	Logs Acre	Average Log		Net Tons/ Acre	Net Cu.Ft. Acre	Net Bd.Ft. Acre	Totals		
		Sample DBH	FF Trees	Ht 16'				Tot	Net Cu.Ft.				Net Bd.Ft.	Tons	Cunits
DF	8	2	78	37	31.199	10.89	31.20	4.1	20.0	3.68	129	624	4	1	1
DF	9	1	80	55	9.620	4.25	9.62	8.1	30.0	2.22	78	289	2	1	0
DF	10	3	82	56	27.061	15.14	27.06	10.3	37.1	7.98	280	1,005	8	3	1
DF	11	4	80	67	33.251	21.78	44.09	10.7	35.4	13.45	472	1,560	13	5	2
DF	13	4	85	71	18.443	17.00	23.05	17.0	56.0	11.20	393	1,291	11	4	1
DF	14	5	82	65	22.414	23.64	36.58	14.9	42.8	15.54	545	1,565	16	5	2
DF	15	6	83	71	24.675	30.28	43.94	17.6	51.6	22.07	772	2,266	22	8	2
DF	16	4	84	73	15.469	21.16	30.94	18.1	61.7	15.98	561	1,910	16	6	2
DF	17	5	81	80	18.699	28.26	37.40	21.3	70.1	22.69	796	2,622	23	8	3
DF	18	3	81	75	9.879	17.53	19.76	25.2	75.5	14.19	497	1,492	14	5	1
DF	Totals	37	81	63	210.712	189.94	303.63	14.9	48.2	129.00	4,523	14,623	129	45	15
DL	19	2	82	65	5.716	10.89	9.27	29.7	70.0	7.58	276	649	8	3	1
DL	22	1	78	77	2.511	6.81	5.02	42.2	110.0	5.80	212	552	6	2	1
DL	Totals	3	81	69	8.227	17.70	14.29	34.1	84.1	13.39	488	1,201	13	5	1
RA	14	1	79	50	3.976	4.25	3.98	19.9	50.0	2.17	79	199	2	1	0
RA	17	1	80	25	2.696	4.25	2.70	19.3	40.0	1.43	52	108	1	1	0
RA	Totals	2	79	40	6.672	8.50	6.67	19.6	46.0	3.60	131	307	4	1	0
Totals		42	81	63	225.610	216.14	324.60	15.8	49.7	145.98	5142	16,131	146	51	16

Leave

TC TSTNDSUM		Stand Table Summary											T03N R08W S30 T0120			
		Area 2											T03N R08W S30 T0120			
		Project WESTWOO											Page: 1			
Twp Rge Sec Tract		Type		Acres		Plots		Sample Trees			Date: 11/08/201					
03N 08W 30 0200		0120		1.00		22		99			Time: 8:49:13AM					
Spc	S T	Sample		Av		Trees/ Acre	BA/ Acre	Logs Acre	Average Log		Net Tons/ Acre	Net Cu.Ft. Acre	Net Bd.Ft. Acre	Totals		
		DBH	Trees	FF 16'	Ht Tot				Net Cu.Ft.	Net Bd.Ft.				Tons	Cunits	MBF
DF		7	1	85	37	5.317	1.55	5.32	3.8	20.0	.58	20	106	1	0	0
DF		8	4	77	43	17.695	6.18	17.69	4.6	22.4	2.32	81	396	2	1	0
DF		9	3	81	45	10.627	4.64	10.63	6.1	26.3	1.86	65	280	2	1	0
DF		10	7	82	47	20.231	10.82	20.23	9.0	29.9	5.17	182	605	5	2	1
DF		11	8	82	57	19.067	12.36	23.90	9.7	34.1	6.58	231	816	7	2	1
DF		12	4	86	55	7.928	6.18	7.93	15.0	42.3	3.37	119	335	3	1	0
DF		13	5	86	63	8.462	7.73	11.84	14.8	42.9	4.98	175	508	5	2	1
DF		14	6	86	69	8.663	9.27	14.45	15.7	45.9	6.50	227	664	6	2	1
DF		15	3	84	57	3.884	4.64	5.18	16.5	49.7	2.43	85	257	2	1	0
DF		16	4	85	78	4.528	6.18	9.06	19.9	70.1	5.13	180	635	5	2	1
DF		17	6	86	84	6.053	9.27	12.11	23.2	84.7	8.00	281	1,025	8	3	1
DF		18	4	85	93	3.520	6.18	7.04	28.1	100.2	5.64	198	705	6	2	1
DF		19	2	88	83	1.638	3.09	3.28	28.6	102.5	2.67	94	336	3	1	0
DF		20	3	81	100	2.111	4.64	4.93	31.2	107.2	4.39	154	528	4	2	1
DF		21	1	88	88	.643	1.55	1.29	31.7	115.0	1.16	41	148	1	0	0
DF	Totals	61	83	57		120.367	94.27	154.86	13.8	47.4	60.79	2,133	7,345	61	21	7
DL		9	1	82	37	3.744	1.55	3.74	5.1	20.0	.52	19	75	1	0	0
DL		16	3	85	74	3.450	4.64	5.72	21.0	70.0	3.30	120	400	3	1	0
DL		17	5	86	70	4.909	7.73	7.95	24.7	77.2	5.40	196	614	5	2	1
DL		18	3	85	81	2.624	4.64	5.25	24.7	85.0	3.56	130	446	4	1	0
DL		19	2	81	70	1.595	3.09	1.60	42.1	129.8	1.85	67	207	2	1	0
DL		20	2	81	79	1.490	3.09	2.24	32.6	106.7	2.01	73	238	2	1	0
DL		21	2	88	105	1.273	3.09	3.19	36.0	140.0	3.15	115	447	3	1	0
DL		22	2	85	98	1.226	3.09	3.06	33.3	122.0	2.81	102	374	3	1	0
DL		23	1	75	83	.526	1.55	1.05	45.3	110.0	1.31	48	116	1	0	0
DL		24	1	88	86	.492	1.55	.98	52.4	200.0	1.42	52	197	1	1	0
DL		35	1	82	111	.231	1.55	.69	87.7	353.3	1.67	61	245	2	1	0
DL	Totals	23	84	72		21.560	35.55	35.47	27.7	94.7	27.01	982	3,359	27	10	3
RA		10	1	80	36	2.891	1.55	2.89	5.4	20.0	.43	16	58	0	0	0
RA		11	1	79	17	2.342	1.55	2.34	7.6	20.0	.49	18	47	0	0	0
RA		12	2	80	17	4.110	3.09	4.11	8.4	24.8	.94	34	102	1	0	0
RA		13	6	80	37	10.305	9.27	10.30	13.0	38.3	3.69	134	394	4	1	0
RA		14	4	80	49	5.763	6.18	4.32	21.8	49.9	2.60	94	215	3	1	0
RA		17	1	79	17	.980	1.55	.98	17.7	70.0	.48	17	69	0	0	0
RA	Totals	15	80	34		26.392	23.18	24.95	12.6	35.5	8.63	313	885	9	3	1
Totals		99	82	55		168.319	153.00	215.28	15.9	53.8	96.43	3428	11,589	96	34	12

Area 3

Stand Table Summary

Project WESTWOO

T03N R08W S30 T0120

T03N R08W S30 T0120

Twp Rge Sec Tract
03N 08W 30 0300

Type Acres Plots Sample Trees
0120 1.00 11 52

Page: 1
Date: 11/08/20
Time: 8:50:46AM

Leave

Leave

Spc	S T	Sample DBH	FF Trees	Av Ht 16' Tot	Trees/ Acres	BA/ Acres	Logs Acres	Average Log		Net Tons/ Acres	Net Cu.Ft. Acres	Net Bd.Ft. Acres	Totals			
								Net Cu.Ft.	Net Bd.Ft.				Tons	Cunits	MBF	
WL		17	1	84	101	1.916	3.09	3.83	29.9	110.0	3.67	115	421	4	1	0
WL		19	1	92	91	1.621	3.09	3.24	35.9	140.0	3.72	116	454	4	1	0
WL		20	1	92	84	1.446	3.09	2.89	31.1	115.0	2.87	90	332	3	1	0
WL		21	1	91	96	1.349	3.09	2.70	44.6	165.0	3.85	120	445	4	1	0
WL		24	1	90	110	1.009	3.09	2.02	64.8	290.0	4.18	131	585	4	1	1
WL		25	3	88	79	2.750	9.27	5.50	54.9	197.5	9.67	302	1,086	10	3	1
WL		28	1	93	116	.723	3.09	2.17	68.4	326.7	4.74	148	708	5	1	1
WL		29	1	92	112	.683	3.09	2.05	68.7	290.0	4.50	141	594	4	1	1
WL		41	1	93	100	.346	3.09	.69	132.0	725.0	2.92	91	501	3	1	1
WL		Totals	11	90	94	11.841	34.00	25.09	50.0	204.4	40.12	1,254	5,128	40	13	5
WH		9	2	72	31	12.966	6.18	12.97	6.0	20.0	2.49	78	259	2	1	0
WH		10	1	76	35	5.342	3.09	5.34	7.8	20.0	1.34	42	107	1	0	0
WH		11	1	80	78	4.684	3.09	4.68	17.1	60.0	2.57	80	281	3	1	0
WH		13	2	88	104	6.456	6.18	12.91	18.4	75.0	7.63	238	968	8	2	1
WH		15	2	90	69	5.283	6.18	7.98	20.7	66.8	5.27	165	533	5	2	1
WH		16	2	91	88	4.542	6.18	9.08	23.7	99.7	6.88	215	906	7	2	1
WH		17	1	92	72	1.894	3.09	3.79	22.4	85.0	2.72	85	322	3	1	0
WH		18	1	90	95	1.789	3.09	3.58	31.9	120.0	3.65	114	429	4	1	0
WH		Totals	12	82	63	42.955	37.09	60.33	16.8	63.1	32.56	1,016	3,805	33	10	4
DL		10	1	75	90	5.667	3.09	5.67	13.6	40.0	2.13	77	227	2	1	0
DL		11	2	87	41	9.453	6.18	9.45	10.0	30.0	2.61	95	284	3	1	0
DL		13	1	87	54	3.353	3.09	3.35	18.4	40.0	1.70	62	134	2	1	0
DL		18	3	78	71	5.408	9.27	7.26	26.7	72.4	5.32	193	526	5	2	1
DL		19	1	87	18	1.537	3.09	1.54	19.4	70.0	.82	30	108	1	0	0
DL		21	1	85	102	1.285	3.09	2.57	44.5	150.0	3.14	114	386	3	1	0
DL		22	1	89	97	1.160	3.09	2.32	46.8	165.0	2.99	109	383	3	1	0
DL		23	2	89	96	2.097	6.18	4.19	49.8	200.2	5.74	209	840	6	2	1
DL		24	1	82	114	.976	3.09	2.93	41.6	163.3	3.35	122	478	3	1	0
DL		25	1	88	99	.929	3.09	1.86	60.7	220.0	3.10	113	409	3	1	0
DL		Totals	14	83	67	31.866	43.27	41.14	27.3	91.7	30.90	1,124	3,772	31	11	4
DF		8	1	53	37	8.855	3.09	8.85								
DF		14	1	81	52	2.771	3.09	2.77	23.5	40.0	1.86	65	111	2	1	0
DF		17	2	86	69	4.163	6.18	6.24	22.2	60.0	3.95	139	375	4	1	0
DF		19	1	87	91	1.553	3.09	3.11	33.1	120.0	2.93	103	373	3	1	0
DF		21	1	88	88	1.273	3.09	2.55	39.7	135.0	2.89	101	344	3	1	0
DF		22	1	88	97	1.192	3.09	2.38	46.8	165.0	3.18	112	394	3	1	0
DF		Totals	7	71	57	19.808	21.64	25.91	20.1	61.6	14.81	520	1,596	15	5	2
RA		12	1	80	36	3.807	3.09	3.81	10.8	40.0	1.13	41	152	1	0	0
RA		13	2	79	51	6.717	6.18	3.51	24.8	90.0	2.39	87	316	2	1	0
RA		15	1	79	79	2.421	3.09	4.84	15.8	60.0	2.11	77	291	2	1	0
RA		16	1	80	57	2.214	3.09	2.21	30.5	80.0	1.86	68	177	2	1	0
RA		17	1	79	44	1.938	3.09	1.94	28.9	60.0	1.54	56	116	2	1	0
RA		22	2	80	24	2.407	6.18	1.19	38.9	50.0	1.27	46	60	1	0	0
RA		Totals	8	79	48	19.505	24.73	17.51	21.4	63.5	10.30	375	1,112	10	4	1
Totals			52	81	64	125.974	160.73	169.97	25.2	90.7	128.69	4288	15,413	129	43	15

TC TSTNDSUM		Area 4		Stand Table Summary					Project WESTWOO					Pg 1 of 2		
T03N R08W S30 T0121										T03N R08W S30 T0121						
Twp	Rge	Sec	Tract	Type	Acres	Plots	Sample Trees			Page:	1					
03N	08W	30	0501	0121	1.00	26	170			Date:	11/14/2001					
										Time:	10:16:16AM					
S Spc	T	DBH	Sample Trees	FF 16'	Av Ht Tot	Trees/ Acre	BA/ Acre	Logs Acre	Average Log		Net Tons/ Acre	Net Cu.Ft. Acre	Net Bd.Ft. Acre	Totals		
									Net Cu.Ft.	Net Bd.Ft.				Tons	Cunits	MBF
DF		9	2	76	33	6.091	2.62	6.09	4.7	20.0	.82	28	122	1	0	0
DF		10	4	82	43	9.738	5.23	9.74	8.0	27.5	2.22	78	268	2	1	0
DF		11	2	83	57	4.230	2.62	4.23	11.9	45.1	1.43	50	191	1	1	0
DF		12	8	85	59	13.097	10.46	14.68	14.4	42.3	6.04	212	620	6	2	1
DF		13	6	82	74	8.343	7.85	12.52	15.8	47.8	5.65	198	598	6	2	1
DF		14	6	88	71	7.294	7.85	11.05	17.3	55.3	5.44	191	612	5	2	1
DF		15	6	85	70	6.401	7.85	9.63	19.5	59.2	5.36	188	571	5	2	1
DF		16	7	83	83	6.668	9.15	13.34	20.1	70.6	7.66	269	941	8	3	1
DF		17	9	85	78	7.395	11.77	12.31	27.2	89.8	9.53	334	1,105	10	3	1
DF		18	2	85	85	1.523	2.62	3.05	27.0	86.9	2.34	82	265	2	1	0
DF		19	3	88	74	2.044	3.92	3.39	27.1	88.2	2.62	92	299	3	1	0
DF		20	4	84	72	2.453	5.23	4.29	30.7	91.0	3.75	132	390	4	1	0
DF		21	8	87	84	4.351	10.46	8.14	37.0	126.9	8.59	301	1,033	9	3	1
DF		22	4	85	83	2.005	5.23	3.50	39.4	117.9	3.92	138	412	4	1	0
DF		23	8	87	88	3.679	10.46	7.35	45.2	158.7	9.48	333	1,167	9	3	1
DF		24	1	89	72	.434	1.31	.87	41.1	150.0	1.02	36	130	1	0	0
DF		26	1	89	95	.349	1.31	.70	67.0	250.0	1.33	47	175	1	0	0
DF	Totals		81	84	66	86.096	105.92	124.87	21.7	71.3	77.19	2,707	8,899	77	27	9
WL		15	3	91	75	3.086	3.92	5.16	21.1	87.8	3.48	109	453	3	1	0
WL		16	3	87	67	2.834	3.92	4.73	21.3	75.9	3.22	101	359	3	1	0
WL		17	3	87	62	2.510	3.92	3.32	30.0	82.1	3.19	100	273	3	1	0
WL		18	3	89	85	2.262	3.92	4.52	28.2	101.5	4.10	128	459	4	1	0
WL		19	2	84	76	1.322	2.62	2.64	30.6	97.0	2.60	81	257	3	1	0
WL		20	2	91	80	1.224	2.62	2.45	31.6	106.8	2.48	77	261	2	1	0
WL		21	3	90	87	1.596	3.92	3.19	43.4	164.5	4.43	138	525	4	1	1
WL		22	1	90	68	.478	1.31	.96	38.3	110.0	1.16	37	105	1	0	0
WL		23	1	91	101	.457	1.31	.91	57.1	225.0	1.67	52	206	2	1	0
WL		25	2	91	83	.786	2.62	1.96	45.8	172.0	2.87	90	337	3	1	0
WL		26	1	90	91	.355	1.31	.35	52.0	100.0	.60	18	35	1	0	0
WL		28	1	92	109	.306	1.31	.92	46.0	226.7	1.35	42	208	1	0	0
WL	Totals		25	89	77	17.214	32.69	31.12	31.3	111.8	31.15	973	3,479	31	10	3
WH		9	1	89	51	2.772	1.31	2.77	9.0	30.0	.79	25	83	1	0	0
WH		10	1	89	23	2.260	1.31	2.26	6.0	20.0	.47	14	45	0	0	0
WH		11	1	90	45	2.175	1.31	2.17	10.6	30.0	.74	23	65	1	0	0
WH		12	4	91	55	6.702	5.23	6.70	16.0	54.1	3.43	107	363	3	1	0
WH		13	4	89	67	5.840	5.23	5.84	21.2	69.4	3.94	124	405	4	1	0
WH		14	10	85	65	12.390	13.08	15.94	18.8	63.8	9.61	300	1,018	10	3	1
WH		15	1	90	71	1.125	1.31	2.25	14.2	50.0	1.02	32	112	1	0	0
WH		16	1	91	47	.937	1.31	.94	20.0	40.0	.60	19	37	1	0	0
WH		17	1	90	79	.820	1.31	1.64	25.1	95.0	1.32	41	156	1	0	0
WH		18	2	85	82	1.523	2.62	2.31	36.2	116.6	2.67	83	269	3	1	0
WH	Totals		26	88	60	36.543	34.00	42.82	17.9	59.6	24.57	767	2,554	25	8	3
RA		9	1	80	21	3.318	1.31									
RA		10	3	79	26	7.100	3.92	7.10	5.5	20.0	1.08	39	142	1	0	0
RA		11	1	80	46	2.056	1.31	2.06	8.6	30.0	.48	18	62	0	0	0
RA		12	8	80	55	13.561	10.46	13.56	15.3	54.0	5.71	208	732	6	2	1
RA		13	3	79	34	4.301	3.92	4.30	13.1	39.9	1.55	56	172	2	1	0
RA		14	3	79	46	3.709	3.92	3.71	17.4	46.8	1.77	65	174	2	1	0
RA		15	4	79	37	4.380	5.23	4.38	17.9	44.9	2.17	78	197	2	1	0
RA		16	3	79	54	2.907	3.92	3.88	19.5	59.9	2.08	76	232	2	1	0

Area 4

Stand Table Summary

Project WESTWOO

T03N R08W S30 T0121

T03N R08W S30 T0121

Twp Rge Sec Tract
03N 08W 30 0501

Type Acres Plots Sample Trees
0121 1.00 26 170

Page: 2
Date: 11/14/201
Time: 10:16:16AM

S Spc	T	DBH	Sample Trees	FF 16'	Av Ht Tot	Trees/ Acre	BA/ Acre	Logs Acre	Average Log		Net Cu.Ft. Acre	Net Cu.Ft. Acre	Net Bd.Ft. Acre	Totals		
									Net Cu.Ft.	Net Bd.Ft.				Tons	Cunits	MBF
RA		17	2	80	66	1.659	2.62	2.49	25.2	76.7	1.72	63	191	2	1	0
RA		18	1	80	31	.708	1.31	.71	25.4	40.0	.49	18	28	0	0	0
RA		21	1	80	52	.549	1.31	.55	53.7	90.0	.81	29	49	1	0	0
RA	Totals		30	79	43	44.248	39.23	42.73	15.2	46.3	17.88	650	1,978	18	6	2
DL		25	1	86	69	.384	1.31	.77	40.2	100.0	.85	31	77	1	0	0
DL		27	2	88	96	.658	2.62	1.32	70.1	260.0	2.54	92	342	3	1	0
DL		28	2	83	80	.609	2.62	1.22	61.2	217.7	2.06	75	265	2	1	0
DL		30	1	87	90	.270	1.31	.54	85.6	330.0	1.27	46	178	1	0	0
DL	Totals		6	86	85	1.921	7.85	3.84	63.5	224.5	6.72	244	862	7	2	1
NL		27	1	84	73	.329	1.31	.66	57.0	190.0	.90	37	125	1	0	0
NL		32	1	79	85	.242	1.31	.48	65.9	235.0	.76	32	114	1	0	0
NL	Totals		2	82	78	.571	2.62	1.14	60.8	209.1	1.66	69	239	2	1	0
Totals			170	84	61	186.593	222.31	246.53	21.9	73.1	159.18	5410	18,012	159	54	18

Area 5

Stand Table Summary

Project WESTWOO

T03N R08W S30 T0140

T03N R08W S30 T0140

Twp Rge Sec Tract
03N 08W 30 0600

Type Acres Plots Sample Trees
0140 1.00 14 99

Page: 2
Date: 11/08/2011
Time: 8:59:23AM

S Spc	T	Sample		Av		Trees/ Acre	BA/ Acre	Logs Acre	Average Log		Net Tons/ Acre	Net Cu.Ft. Acre	Net Bd.Ft. Acre	Totals		
		DBH	Trees	FF 16'	Ht Tot				Net Cu.Ft.	Net Bd.Ft.				Tons	Cunits	MBF
RA	11	4	80	57	15.437	9.71	15.44	9.1	29.5	3.83	141	456	4	1	0	
RA	12	1	80	60	2.896	2.43	2.90	18.4	50.0	1.47	53	145	1	1	0	
RA	13	2	79	76	5.395	4.86	5.40	24.8	80.0	3.69	134	432	4	1	0	
RA	14	3	79	59	6.951	7.29	9.22	15.7	50.0	3.98	145	461	4	1	0	
RA	15	2	80	52	4.016	4.86	4.02	23.4	68.8	2.58	94	276	3	1	0	
RA	17	1	80	63	1.636	2.43	1.64	37.5	90.0	1.69	61	147	2	1	0	
RA	19	1	80	48	1.208	2.43	1.21	44.3	80.0	1.47	53	97	1	1	0	
RA	24	1	79	52	.786	2.43	.79	69.9	110.0	1.51	55	86	2	1	0	
RA	Totals		16	80	60	42.778	38.86	45.05	16.3	46.6	20.22	736	2,100	20	7	2
SS	10	1	34	38	4.543	2.43	4.54									
SS	Totals		1	34	38	4.543	2.43	4.54								
Totals		99	78	71	237.088	240.43	328.41	20.4	77.2	202.53	6702	25,337	203	67	25	



"STEWARDSHIP IN FORESTRY"

Westwood

Volume Summary

Area 1A - Retention Cut					
7 acres					
SPECIES	Gross MBF/ Acre	Net MBF/ Acre	Net MBF	Hidden D&B	Adj Net Vol MBF
Douglas-fir	12.9	12.6	88	5%	84
Alder	0.3	0.3	2	5%	2
TOTAL			90		86

Area 1B - Modified Clearcut					
13 acres					
SPECIES	Gross MBF/ Acre	Net MBF/ Acre	Net MBF	Hidden D&B	Adj Net Vol MBF
Douglas-fir	14.8	14.6	190	5%	181
Alder	0.3	0.3	4	10%	4
TOTAL			194		185

Area 2 - Retention Cut					
64 acres					
SPECIES	Gross MBF/ Acre	Net MBF/ Acre	Net MBF	Hidden D&B	Adj Net Vol MBF
Douglas-fir	7.4	7.3	467	5%	444
Hemlock			0		0
Alder	0.9	0.9	58	10%	52
TOTAL			525		496

Area 3 - Partial Cut					
15 acres					
SPECIES	Gross MBF/ Acre	Net MBF/ Acre	Net MBF	Hidden D&B	Adj Net Vol MBF
Douglas-fir	1.6	1.6	24	5%	23
Hemlock	3.8	3.8	57	5%	54
Alder	1.1	1.1	17	10%	15
TOTAL			98		92



"STEWARDSHIP IN FORESTRY"

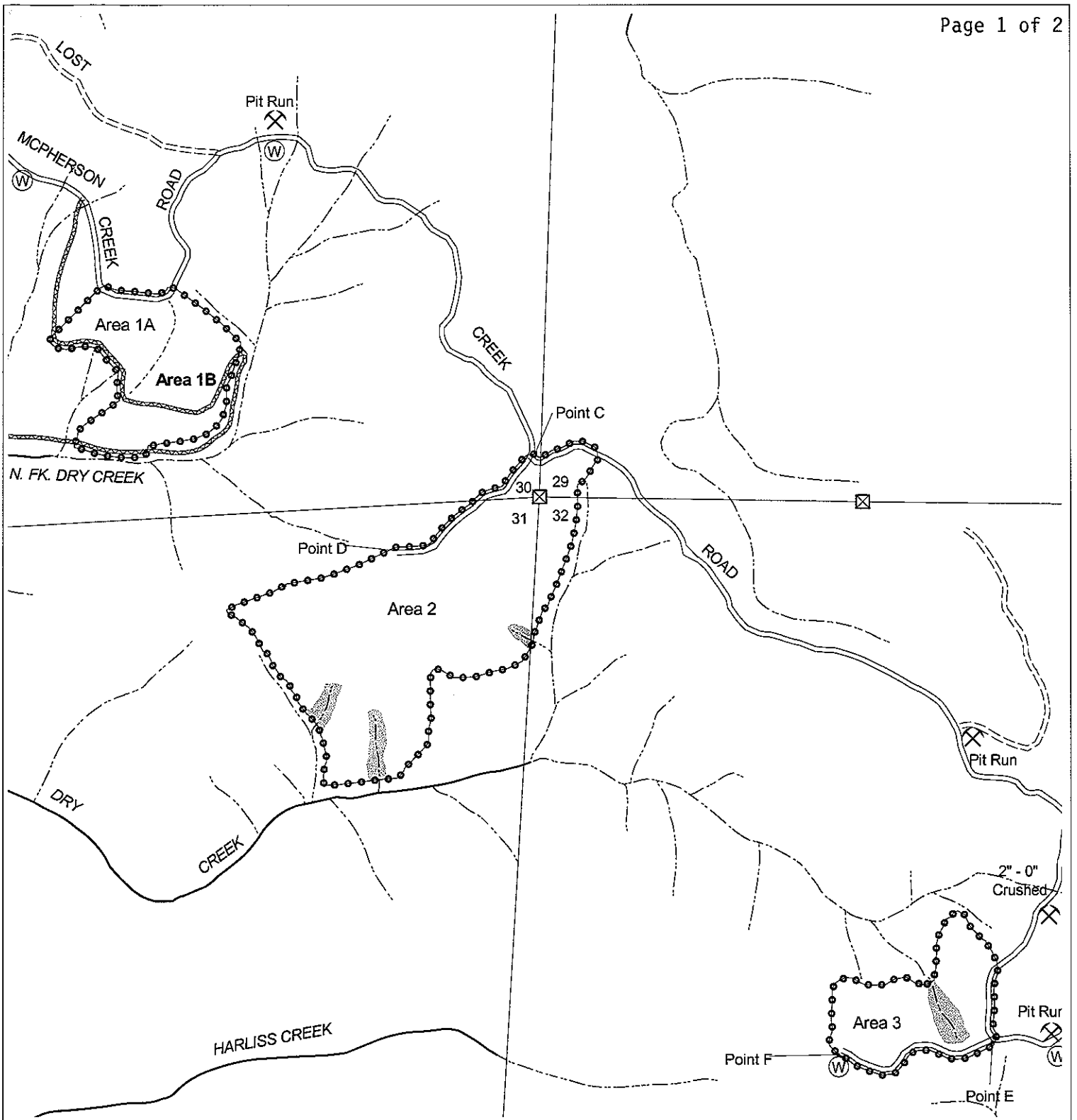
Westwood

Volume Summary

Area 4 - Modified Clearcut					
98 acres					
SPECIES	Gross MBF/ Acre	Net MBF/ Acre	Net MBF	Hidden D&B	Adj Net Vol MBF
Douglas-fir	9.0	8.9	872	5%	828
Hemlock	2.0	2.0	196	5%	188
Alder	2.0	2.0	196	10%	176
TOTAL			1264		1192

Area 5 - Partial Cut					
52 acres					
SPECIES	Gross MBF/ Acre	Net MBF/ Acre	Net MBF	Hidden D&B	Adj Net Vol MBF
Douglas-fir	2.3	2.3	120	5%	114
Hemlock	6.7	6.6	343	5%	326
TOTAL			463		440

TOTAL SALE VOLUME				Total Acres: 249
SPECIES	MBF	% D&B	Net Vol. (MBF)	
Douglas-fir	1761	5%	1674	
Hemlock	596	5%	568	
Alder	277	10%	249	
TOTAL	2634		2491	



- Tractor landing
- Cable landing
- ▲ Domestic water supply
- ⊗ Blocked
- Cable yarding
- ▨ Ground yarding
- ▩ Helicopter yarding
- ▧ Buffer
- ▨ Non-required thinning
- Setting boundary
- Area boundary
- Sale boundary
- Ownership boundary
- Type-F stream
- Type-N stream
- Seasonal Stream
- ==== Surfaced road
- ==== Unsurfaced Road
- ==== County road
- ② Non-project road
- Swing road
- ==== Abandoned road
- OHV trail

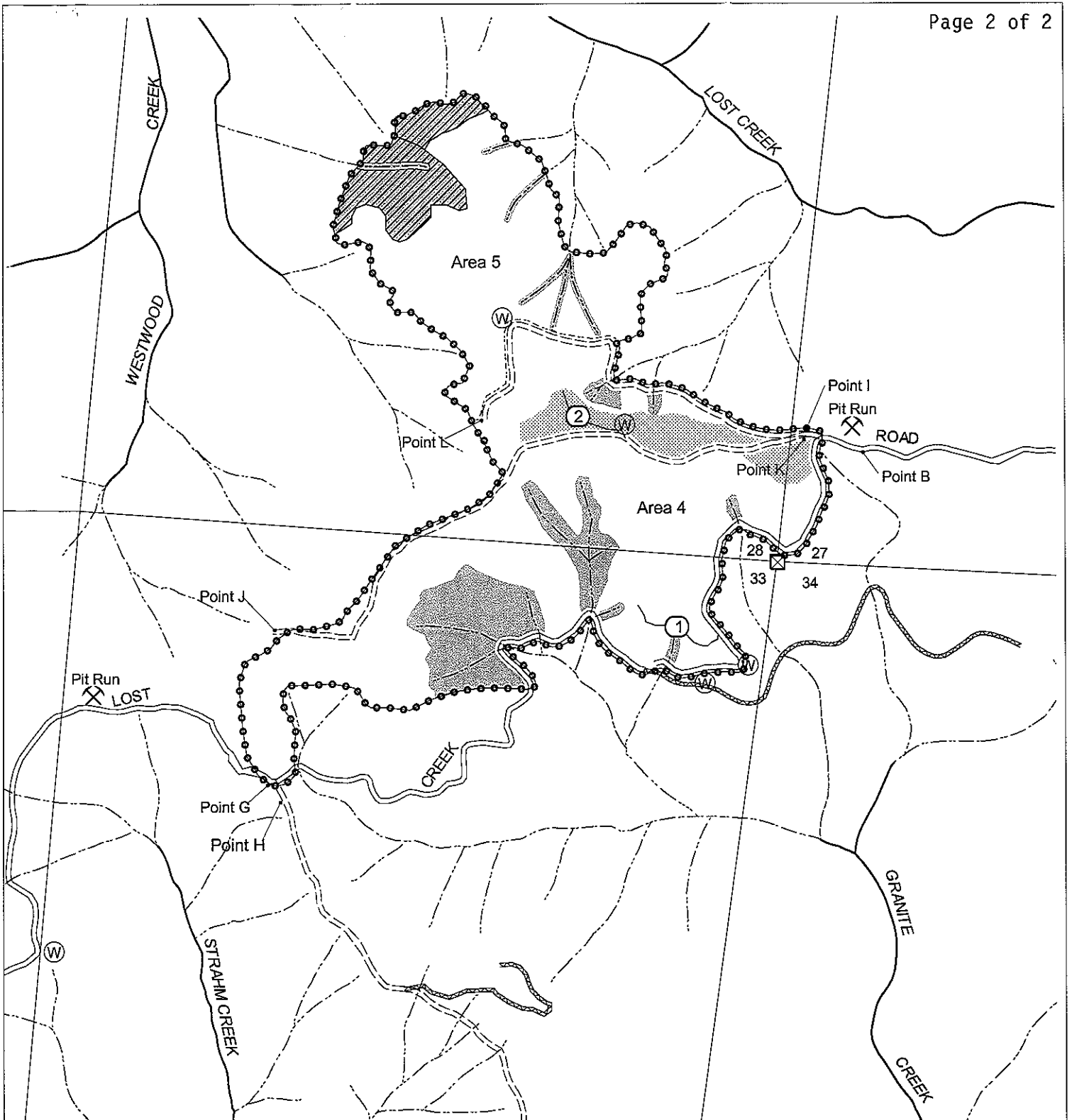
LOGGING PLAN
 Timber Sale Contract No. 341-06-66
 Westwood
 Portions of Sections 27, 28, 29, 30,
 31, 32, and 33, T3N, R8W, W. M.
 Tillamook County, Oregon



Area	Type of Operation	Acres Sale	Acres Net
1A	Retention cut	10	7
1B	Modified clearcut	16	13
2	Retention cut	73	64
3	Partial cut	20	15
4	Retention cut	143	98
5	Partial cut	65	52
Total		327	249

Tillamook District GIS
 6/3/2004
 This product is for informational use and
 may not have been prepared for, or suitable
 for legal, engineering, or surveying purposes.





- Tractor landing
- Cable landing
- ▲ Domestic water supply
- ⊗ Blocked
- Cable yarding
- ▨ Ground yarding
- ▩ Helicopter yarding
- ▧ Buffer
- ▨ Non-required thinning
- Setting boundary
- Area boundary
- Sale boundary
- Ownership boundary
- Type-F stream
- Type-N stream
- Seasonal Stream
- Surfaced road
- Unsurfaced Road
- County road
- ② Non-project road
- Swing road
- Abandoned road
- OHV trail

LOGGING PLAN
 Timber Sale Contract No. 341-06-66
 Westwood
 Portions of Sections 27, 28, 29, 30,
 31, 32, and 33, T3N, R8W, W. M.
 Tillamook County, Oregon



Area	Type of Operation	Acres	
		Sale	Net
1A	Retention cut	10	7
1B	Modified clearcut	16	13
2	Retention cut	73	64
3	Partial cut	20	15
4	Retention cut	143	98
5	Partial cut	65	52
Total		327	249

Tillamook District GIS
6/3/2004

This product is for informational use and may not have been prepared for, or suitable for legal, engineering, or surveying purposes.

