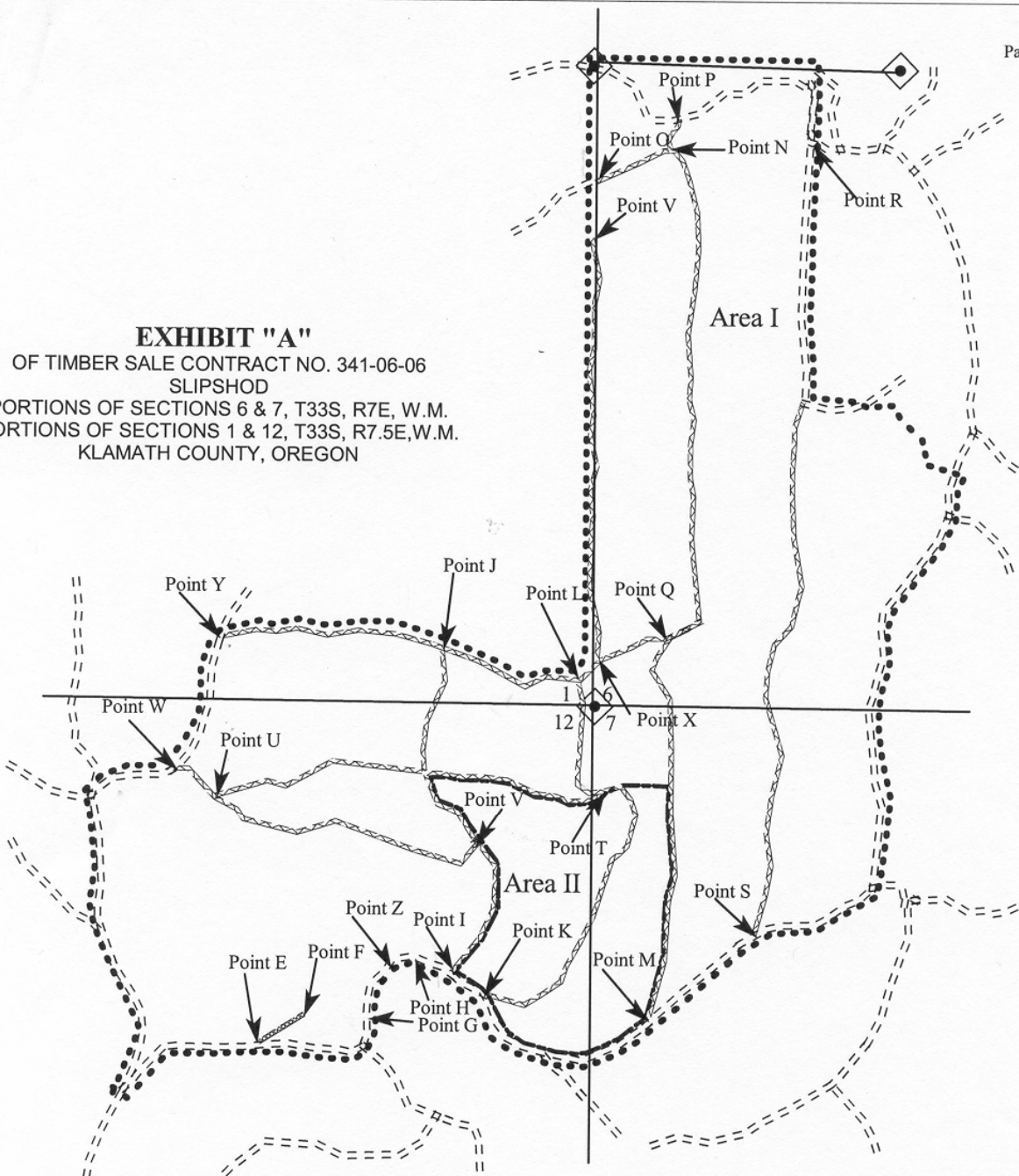


EXHIBIT "A"
 OF TIMBER SALE CONTRACT NO. 341-06-06
 SLIPSHOD
 PORTIONS OF SECTIONS 6 & 7, T33S, R7E, W.M.
 PORTIONS OF SECTIONS 1 & 12, T33S, R7.5E, W.M.
 KLAMATH COUNTY, OREGON



- LEGEND**
- Timber Sale Boundary
 - Section Line
 - Unsurfaced Road (Improvement Required)
 - Unsurfaced Road (Construction Required)
 - Unsurfaced Road
 - Point A Point for Project Work
 - Known Survey Corner
 - Area Boundary

Scale
 1:15,840
 1 inch = 1320 feet



Area I: 559 acres
 Area II: 78 acres
TOTAL SALE ACREAGE: 637 acres

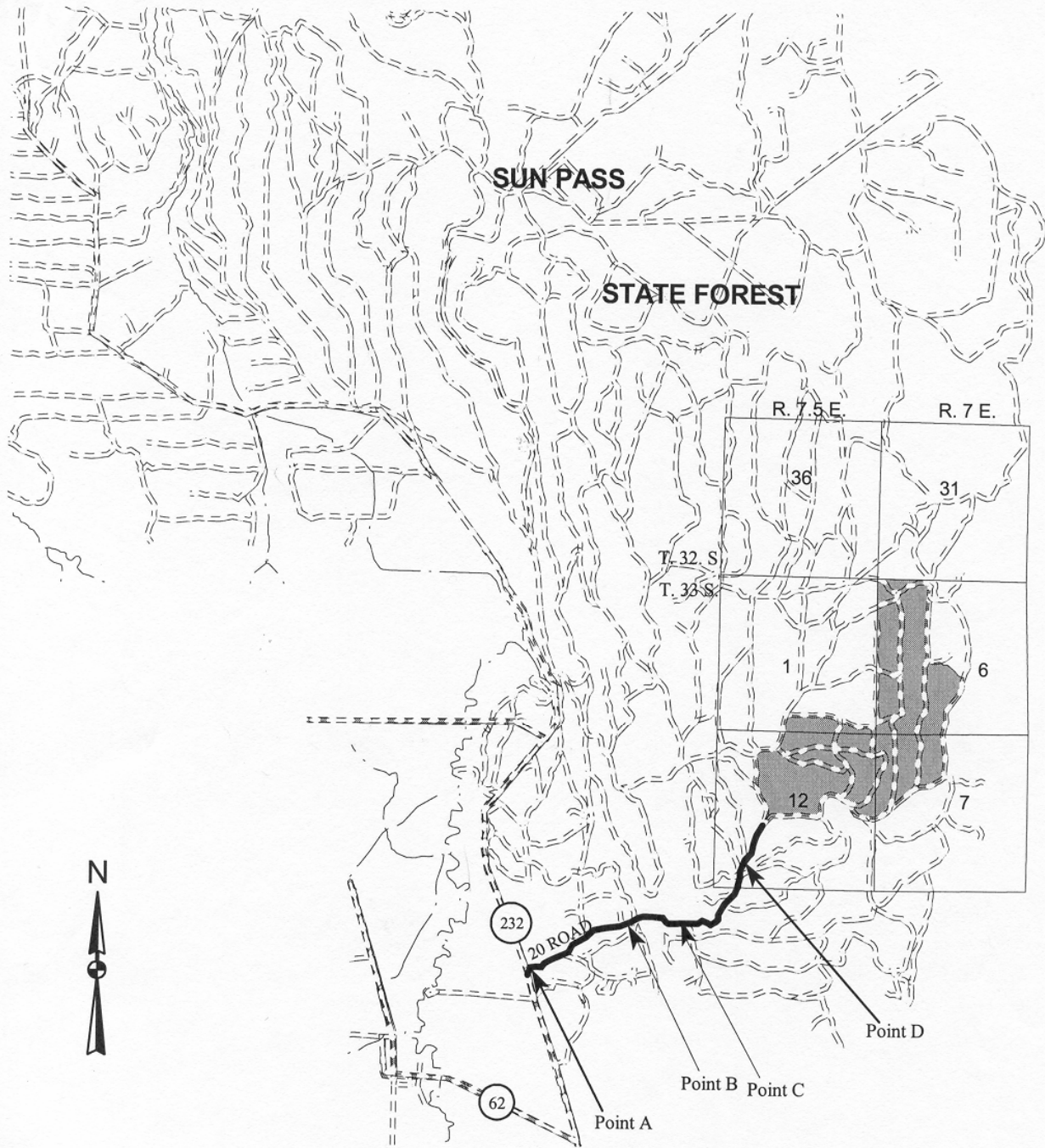



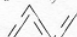

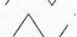


EXHIBIT "A"
VICINITY MAP
OF TIMBER SALE CONTRACT NO. 341-06-06
SLIPSHOD
PORTIONS OF SECTIONS 6 & 7 OF T33S, R7E
AND SECTIONS 1&12 OF T33S, R7.5E, W.M.
KLAMATH COUNTY, OREGON

LEGEND

-  Timber Sale
-  Haul Route
-  Surfaced Road
-  Unsurfaced Road
-  Section Line
-  Type F Stream

