

EXHIBIT "A"

OF TIMBER SALE CONTRACT NO. 341-06-05
 FOUR CORNERS
 PORTIONS OF SECTIONS 17,18,&19,T32S.,R71/2E.,W.M.
 KLAMATH COUNTY, OREGON

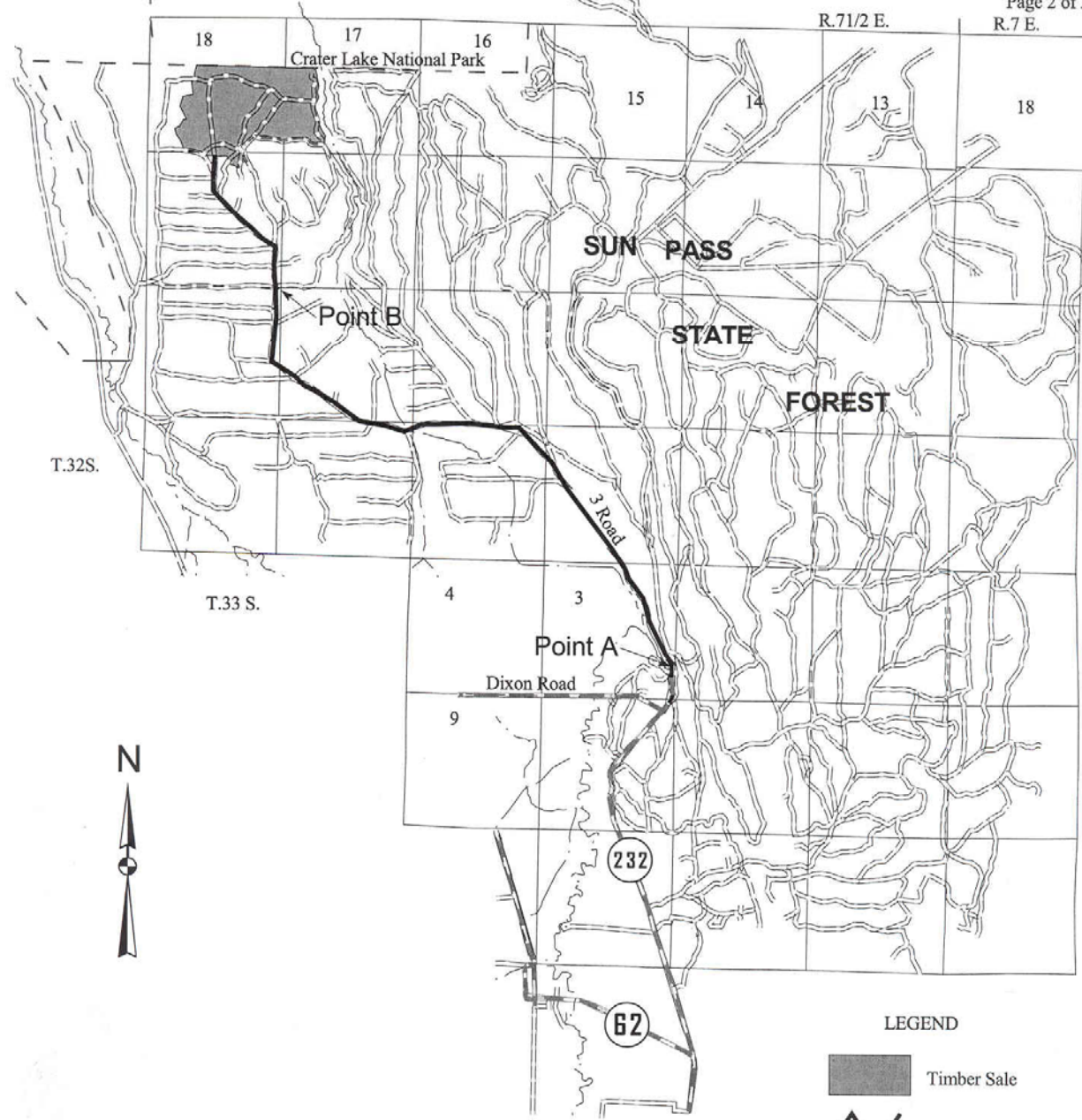
LEGEND

- Timber Sale Boundary (posted)
- Land Survey Monument
- Section lines
- Exclusion Area
- Type F Stream
- Unsurfaced road
- Unsurfaced road (improvement required)
- Point A Point for Project Work

TOTAL SALE AREA	384.7 acres
EXCLUSION AREA	7.5 acres
<hr/>	
TIMBER SALE ACREAGE	377 acres

Scale
 1:12000
 1 inch = 1,000 Feet





LEGEND







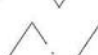
-  Timber Sale
-  Haul Route
-  Surfaced Road
-  Unsurfaced Road
-  Crater Lake Boundary
-  Section Line
-  Type F Stream

EXHIBIT "A"

VICINITY MAP
 OF TIMBER SALE CONTRACT NO. 341-06-05
 FOUR CORNERS
 PORTIONS OF SECTIONS 17,18,&19,T32S.,R71/2E.,W.M.
 KLAMATH COUNTY, OREGON

