

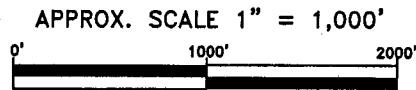
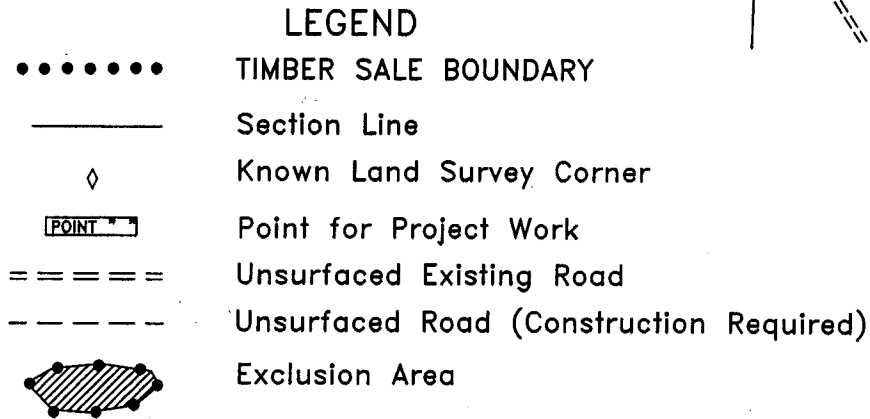
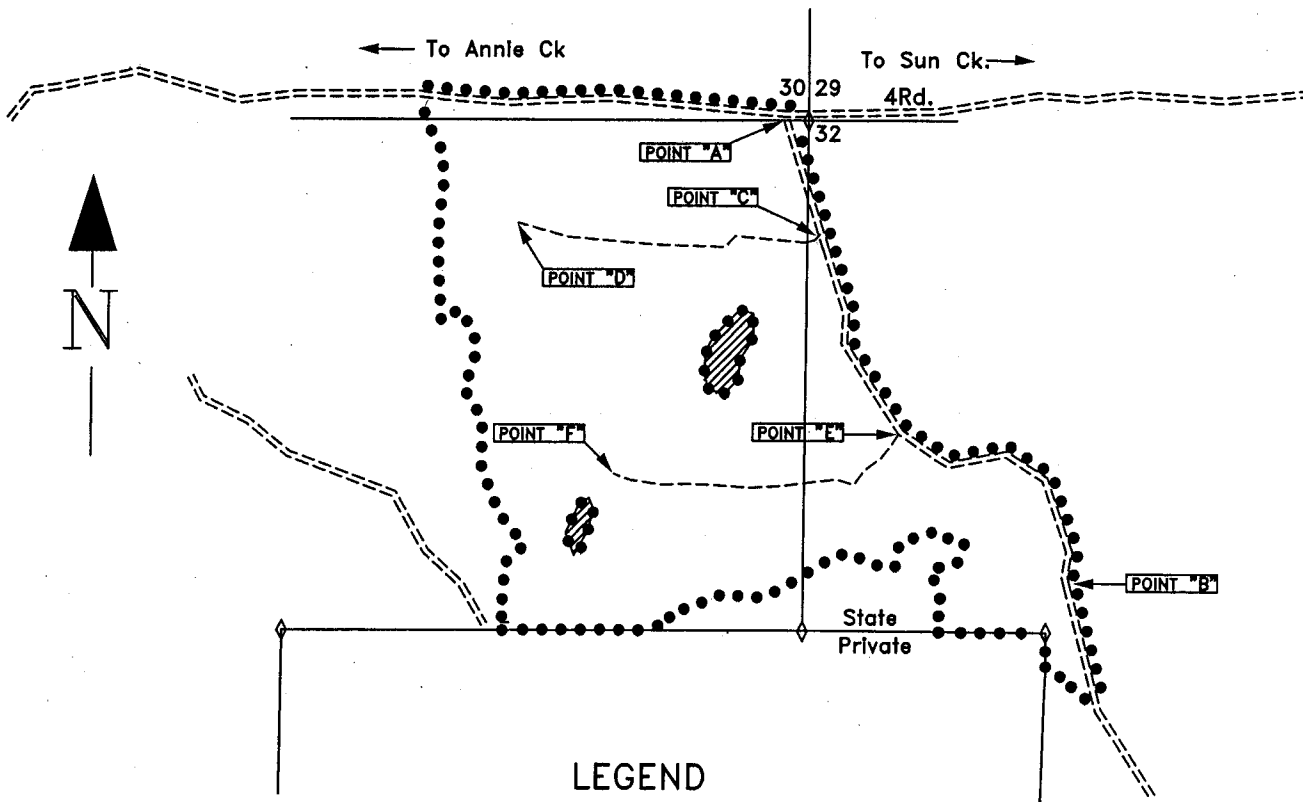
EXHIBIT "A"  
of Timber Sale Contract No.  
341-04-21

Huckleberry Hound

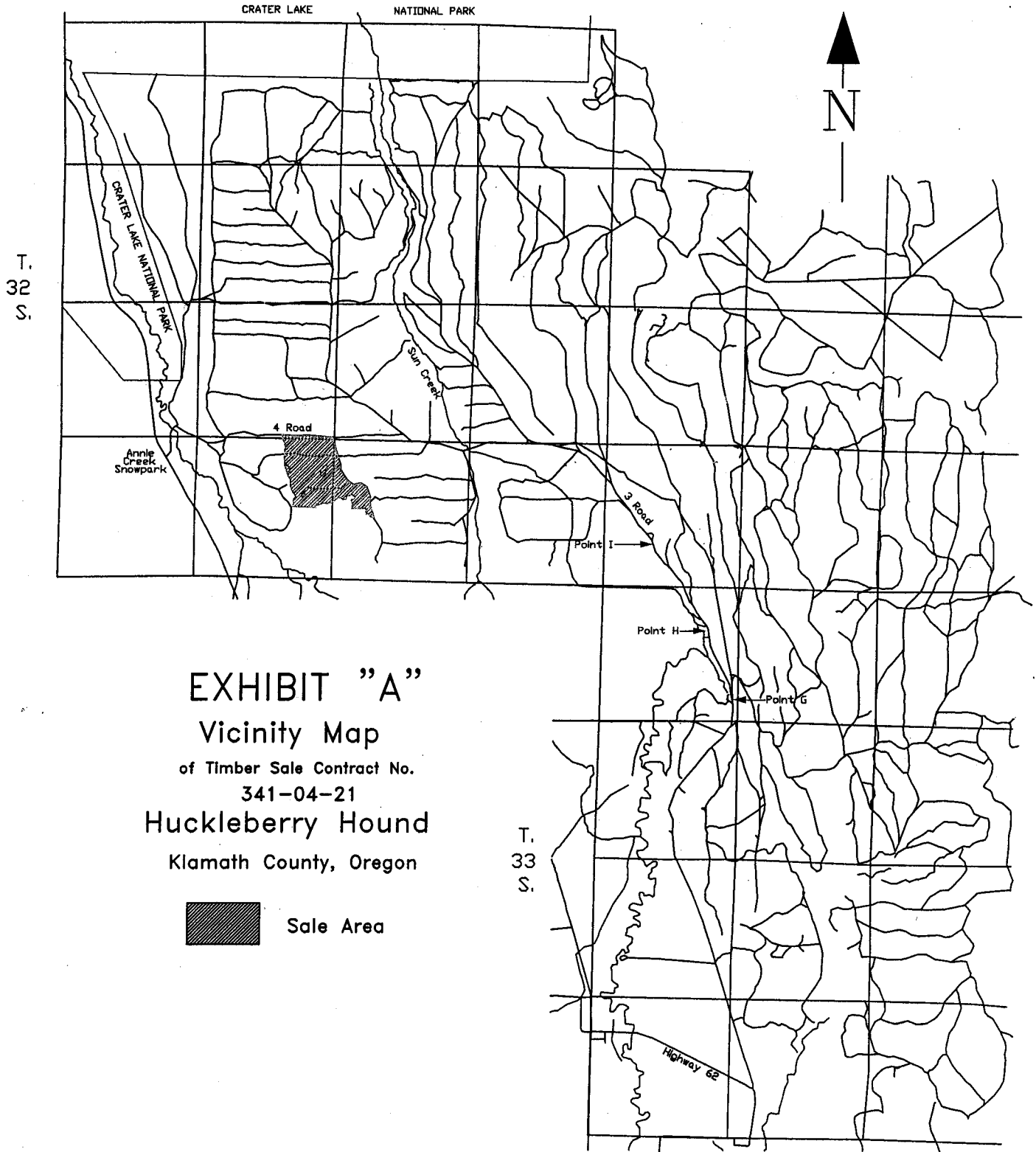
Portions of Sections 30, 31, & 32, T32S, R7.5E, W.M.

Klamath County, Oregon

Approximately 138 Acres



R. 7 1/2 E.



# EXHIBIT "A"

## Vicinity Map

of Timber Sale Contract No.

341-04-21

## Huckleberry Hound

Klamath County, Oregon



Sale Area