

- ⊗ Rock source
- ⊙ Stock pile
- ⊙ Waste area
- ⊗ Block
- * Culvert removal
- ⌒ Bridge
- ⌒ Gate
- ⊗ Survey corner
- ▲ Domestic water supply
- ⊞ Green tree retention area
- Buffer zone
- Area boundary
- Sale boundary
- Ownership boundary
- Type-F stream
- Type-N stream
- Unsurfaced road
- Surfaced road
- State highway
- Abandoned road
- Road construction
- County road
- OHV trail
- Non-motorized trail

EXHIBIT A
Timber Sale Contract No. 341-04-13
Nehalem Divide
 Portions of sections 2, 10, 11, 15, and 16, T3N, R9W, W. M.
 Tillamook County, Oregon

Area	Type of Operation	Acres Sale	Acres Net
1	Clearcut	113	94
Riparian	Partial Cut	10	10
2	Partial Cut	43	36
3	Partial Cut	113	90
4	Partial Cut	29	23
Total		308	253



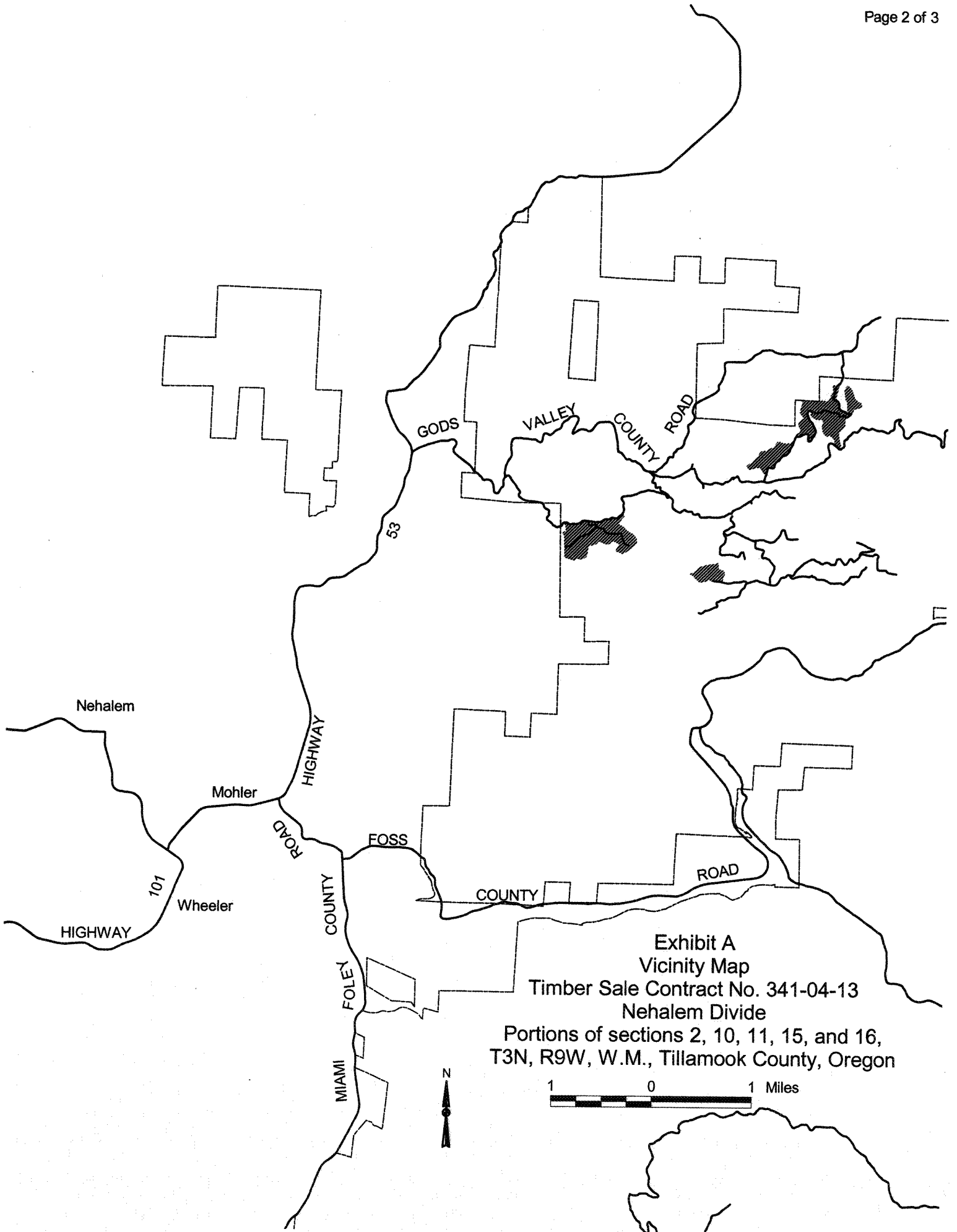
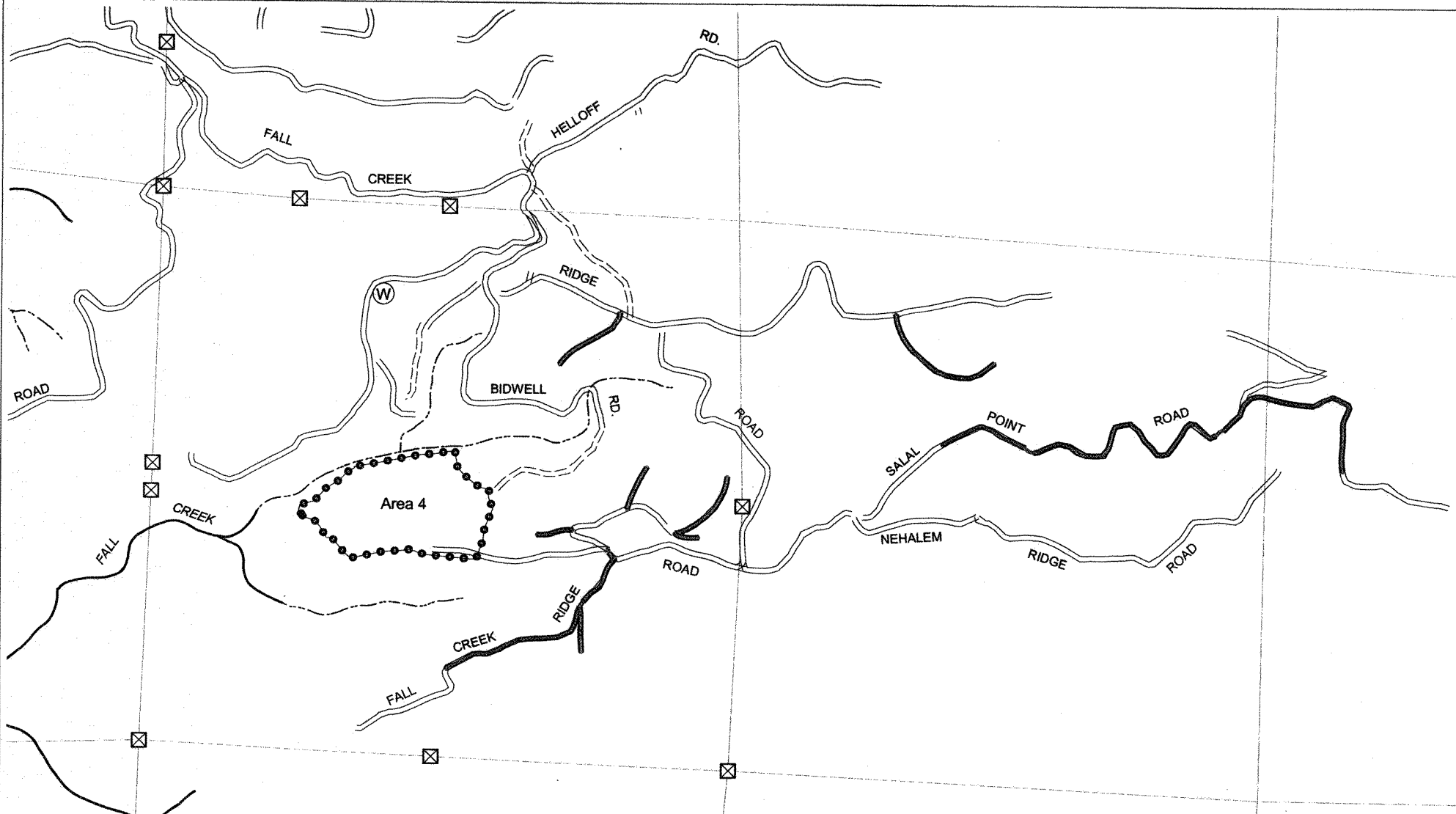
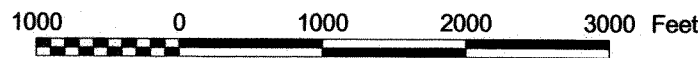


Exhibit A
Vicinity Map
Timber Sale Contract No. 341-04-13
Nehalem Divide
Portions of sections 2, 10, 11, 15, and 16,
T3N, R9W, W.M., Tillamook County, Oregon



- Road Brushing Required
- Area boundary
- Sale boundary
- Ownership boundary
- Type-F stream
- Type-N stream
- Surfaced road
- Unsurfaced road
- State highway
- County road
- Non-project road
- Swing road
- Abandoned road
- OHV trail
- Non-motorized trail

Exhibit A
Road Brushing
Timber Sale Contract No. 341-04-13
Nehalem Divide
 Portions of sections 2, 10, 11, 15, and 16, T3N, R9W, W. M.
 Tillamook County, Oregon



Area	Type of Operation	Acres	
		Gross	Net
1	Clearcut	113	94
Riparian	Partial Cut	10	10
2	Partial Cut	43	36
3	Partial Cut	113	90
4	Partial Cut	29	23
Total		308	253