

EXHIBIT "A"
VICINITY MAP
OF TIMBER SALE CONTRACT NO. 341-03-52
SELDERS CREEK
CLATSOP COUNTY, OREGON

Trailover
 Quarry and
 Stockpile Site

Approximately
 14 Miles
 To Mist

Approx.
 28 Miles
 to Astoria

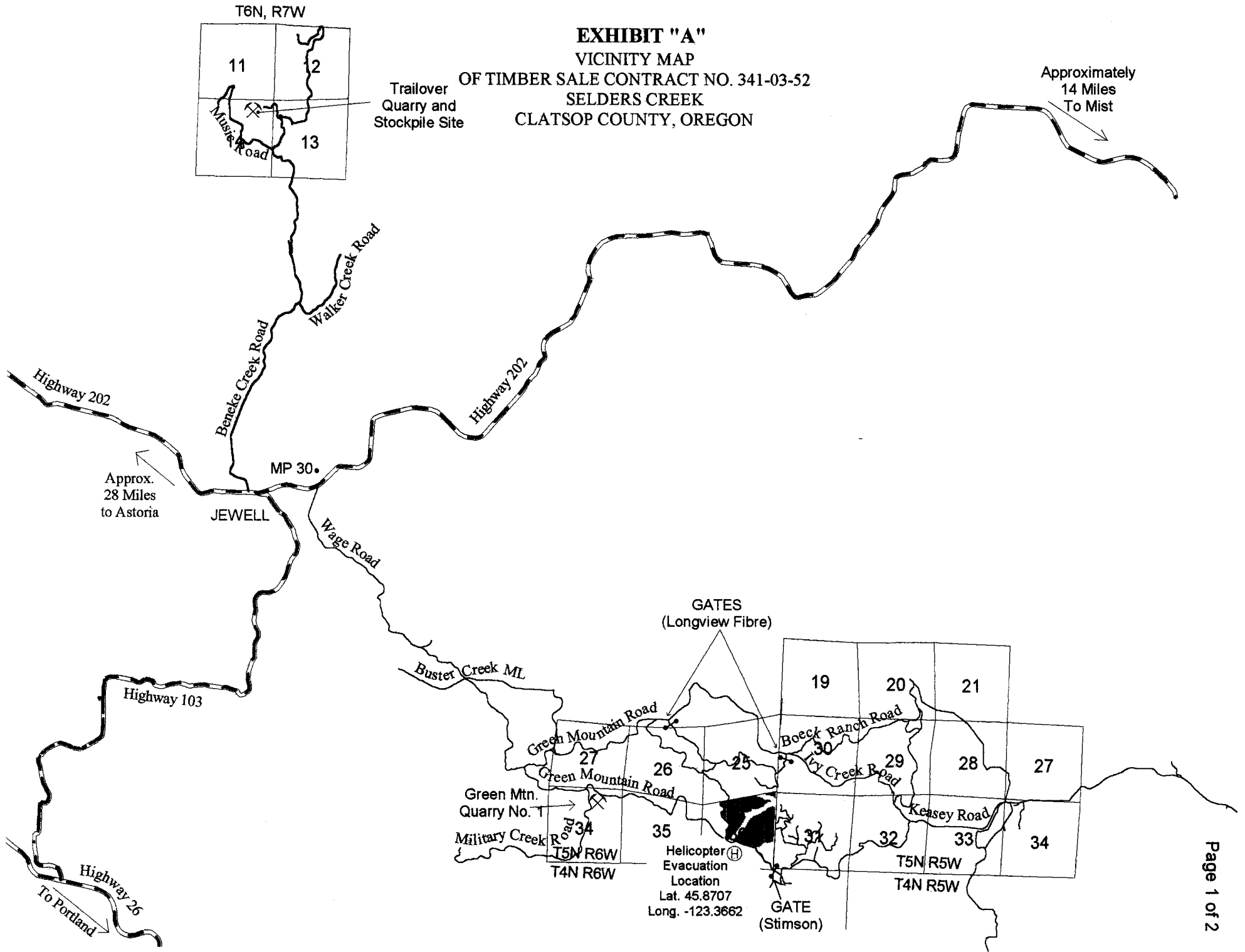


EXHIBIT "A"

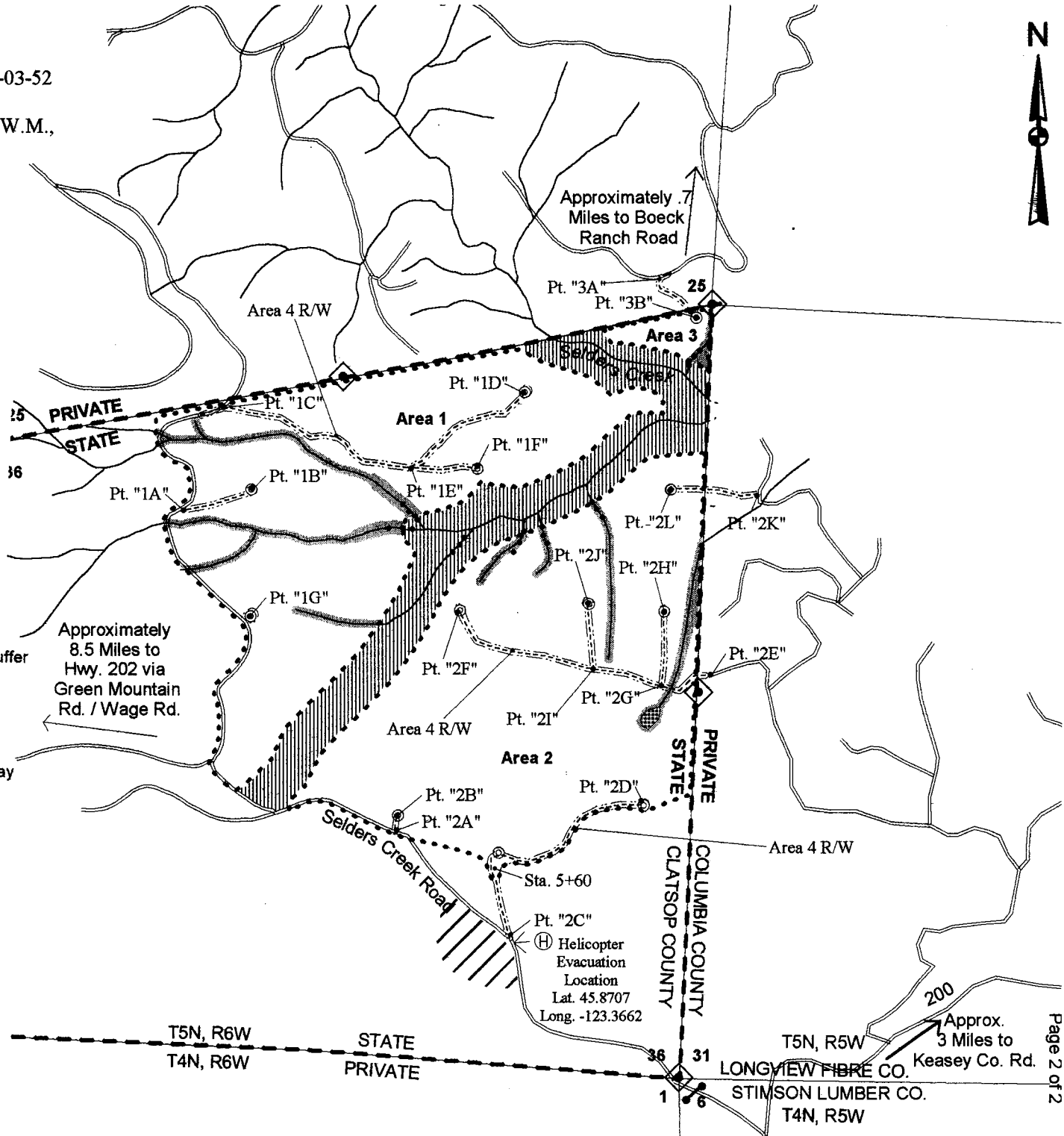
OF TIMBER SALE CONTRACT NO. 341-03-52
 SELDERS CREEK
 PORTIONS OF SECTION 36, T5N, R6W, W.M.,
 CLATSOP COUNTY, OREGON



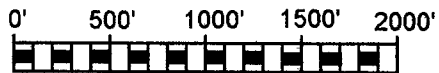
APPROXIMATE ACREAGE:

AREA 1	- 101 ACRES
AREA 2	- 111 ACRES
AREA 3	- 4 ACRES
TOTAL	- 216 ACRES

- ### LEGEND
- Timber Sale Boundary
 - Right Of Way Boundary
 - Posted Interior Type N Stream Buffer
 - GTRA and Stream Buffer Area
 - POINT "A"
 - Property Line
 - New Construction
 - Existing Surfaced Road
 - Paved County Road/State Highway
 - STA. 0+00
 - Survey Station
 - Known Land Survey Corner
 - Type F Stream
 - Type N Stream
 - Landings to be Constructed
 - Reforestation Area
 - Gate
 - Helicopter Evacuation Point
 - Swamp



APPROX. SCALE 1"=1,000'



T5N, R6W
 T4N, R6W

STATE
 PRIVATE

PRIVATE
 STATE
 CLATSOP COUNTY
 COLUMBIA COUNTY

T5N, R5W
 T4N, R5W
 LONGVIEW FIBRE CO.
 STIMSON LUMBER CO.

Approx.
 3 Miles to
 Keasey Co. Rd.