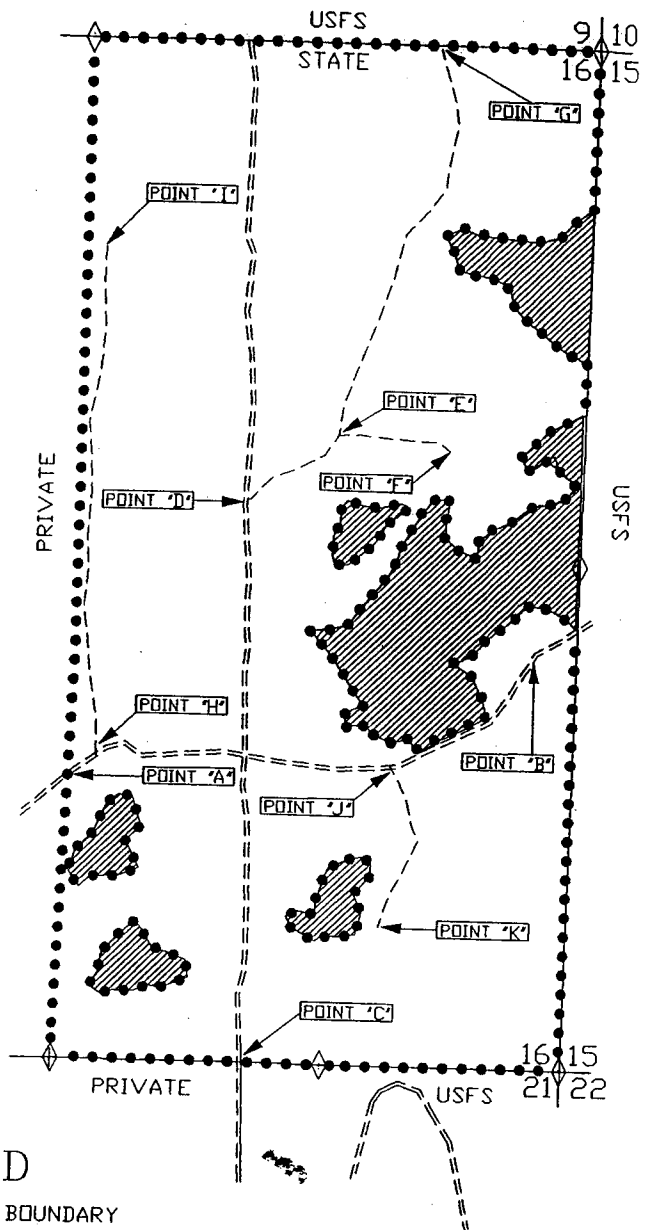
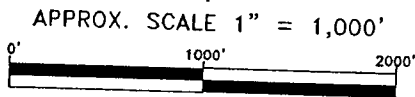


EXHIBIT "A"
 OF TIMBER SALE CONTRACT NO.
 341-03-42
 BEAVER RIM
 AREA I
 APPROXIMATELY 281 ACRES
 W 1/2 SECTION 16, T27S, R8E, W.M.
 KLAMATH COUNTY, OREGON



- LEGEND**
- TIMBER SALE BOUNDARY
 - SECTION LINE
 - ◇ KNOWN LAND SURVEY CORNER
 - EXCLUSION AREA
 - ===== UNSURFACED EXISTING ROAD
 - UNSURFACED ROAD [CONST. REQUIRED]
 - POINT 'A' POINT FOR PROJECT WORK

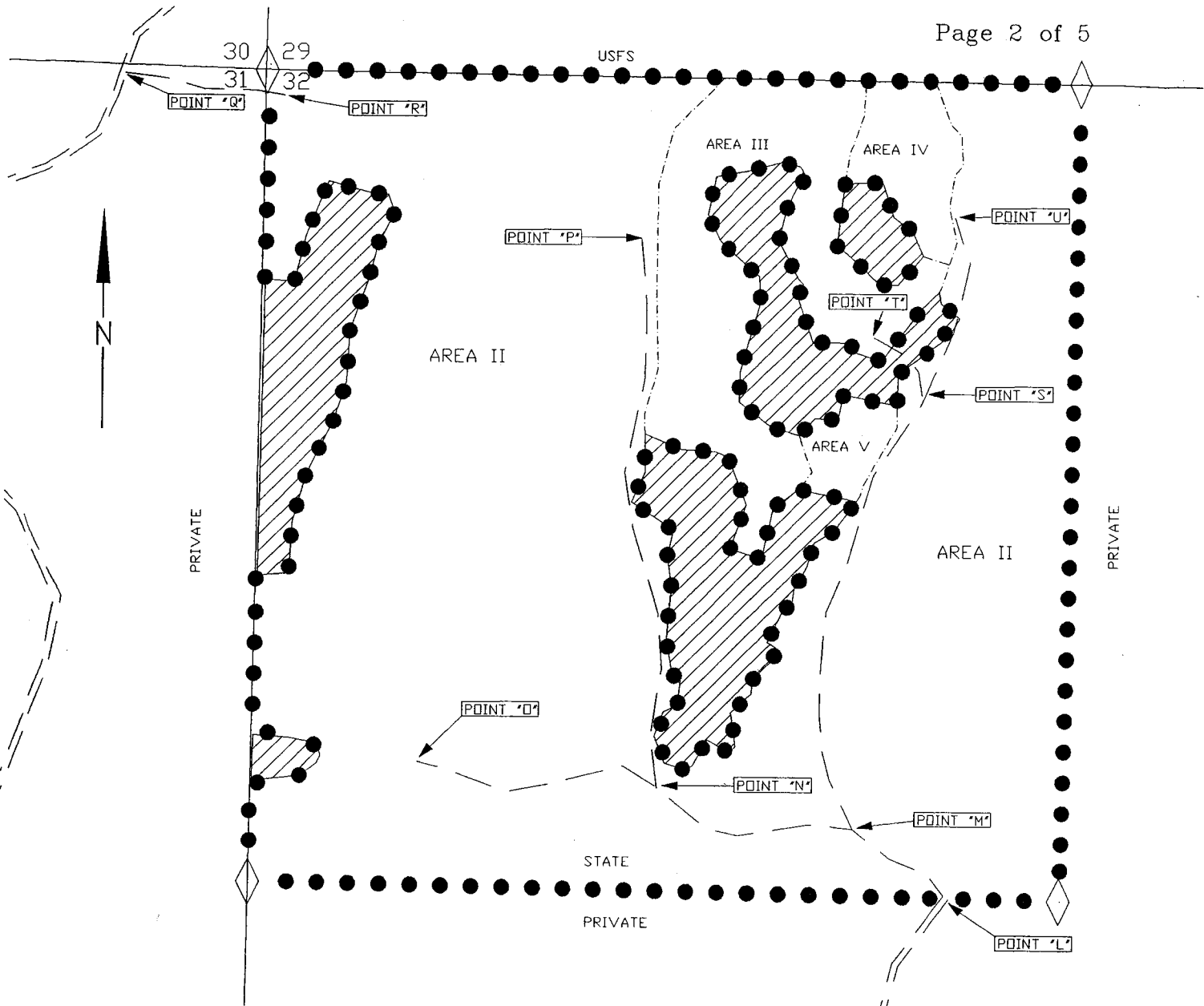


EXHIBIT "A"

OF TIMBER SALE CONTRACT NO.

341-03-42

BEAVER RIM

AREAS II, III, IV, & V

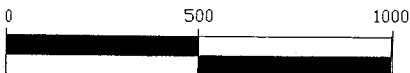
NW 1/4 SECTION 32, T27S, R8E, W.M.

KLAMATH COUNTY, OREGON

APPROXIMATE ACREAGE:

AREA II	118 ACRES
AREA III	14 ACRES
AREA IV	3 ACRES
AREA V	2 ACRES
EXCLUSION AREAS	23 ACRES

APPROX. SCALE 1" = 500'



LEGEND

- ● ● ● ● TIMBER SALE BOUNDARY
- SECTION LINE
- ◇ KNOWN LAND SURVEY CORNER
- ▨ EXCLUSION AREA
- - - AREA BOUNDARY
- == == == UNSURFACED EXISTING ROAD
- - - UNSURFACED ROAD (CONST. REQUIRED)
- POINT " " POINT FOR PROJECT WORK

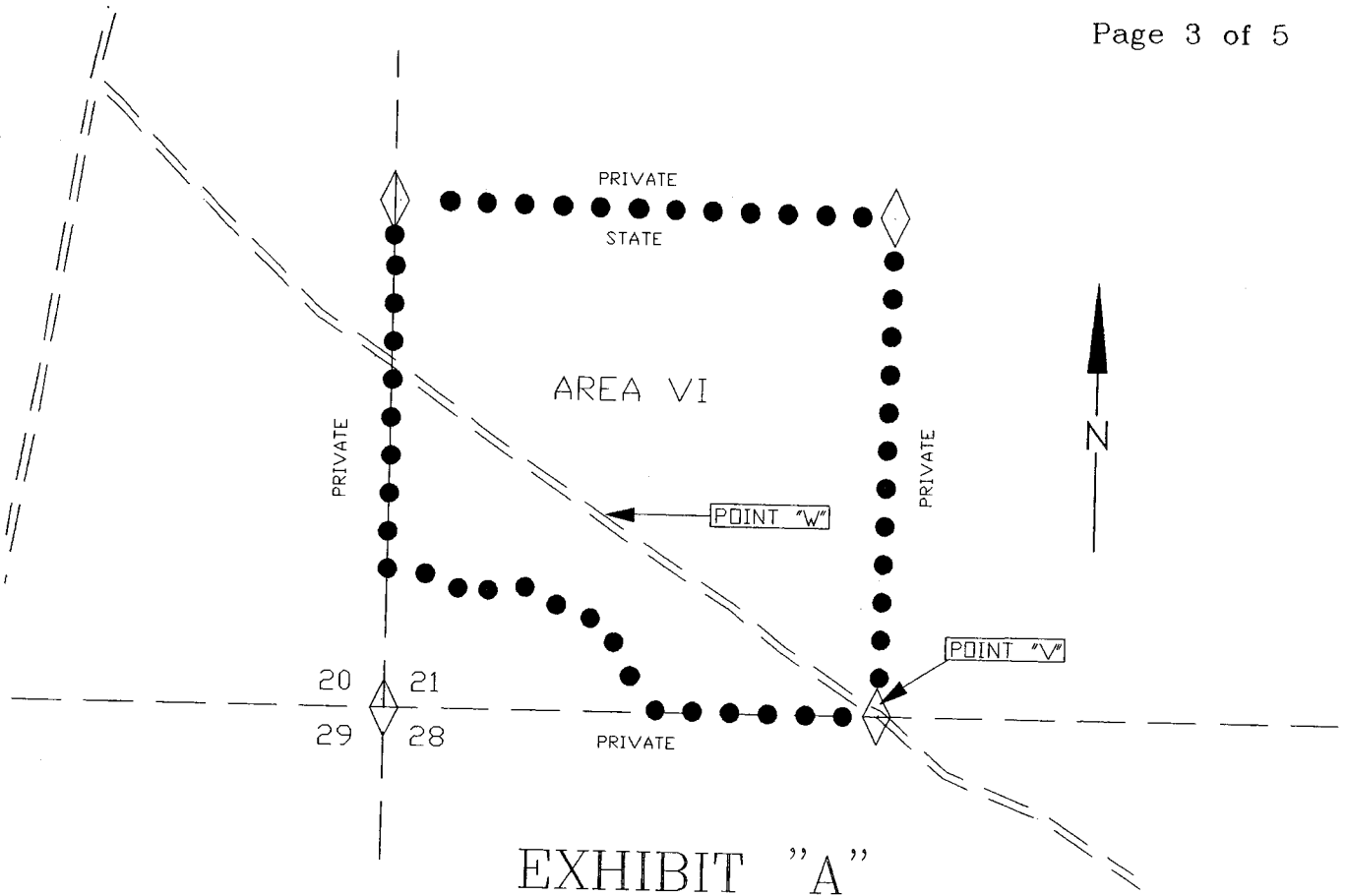


EXHIBIT "A"

OF TIMBER SALE CONTRACT NO.

341-03-42

BEAVER RIM

AREA VI

APPROXIMATELY 36 ACRES

PORTION OF SECTION 21, T28S, R8E, W.M.

KLAMATH COUNTY, OREGON

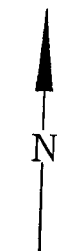
APPRDX. SCALE 1" = 500'



LEGEND

- ● ● ● ● TIMBER SALE BOUNDARY
- — — SECTION LINE
- ◇ KNOWN LAND SURVEY CORNER
- == == == UNSURFACED EXISTING ROAD
- POINT " " POINT FOR PROJECT WORK

R. 8 E.



T.
27
S.



EXHIBIT "A"


VICINITY MAP

OF TIMBER SALE CONTRACT NO.

341-03-42

BEAVER RIM

KLAMATH COUNTY, OREGON

SALE AREAS 

R. 8 E.

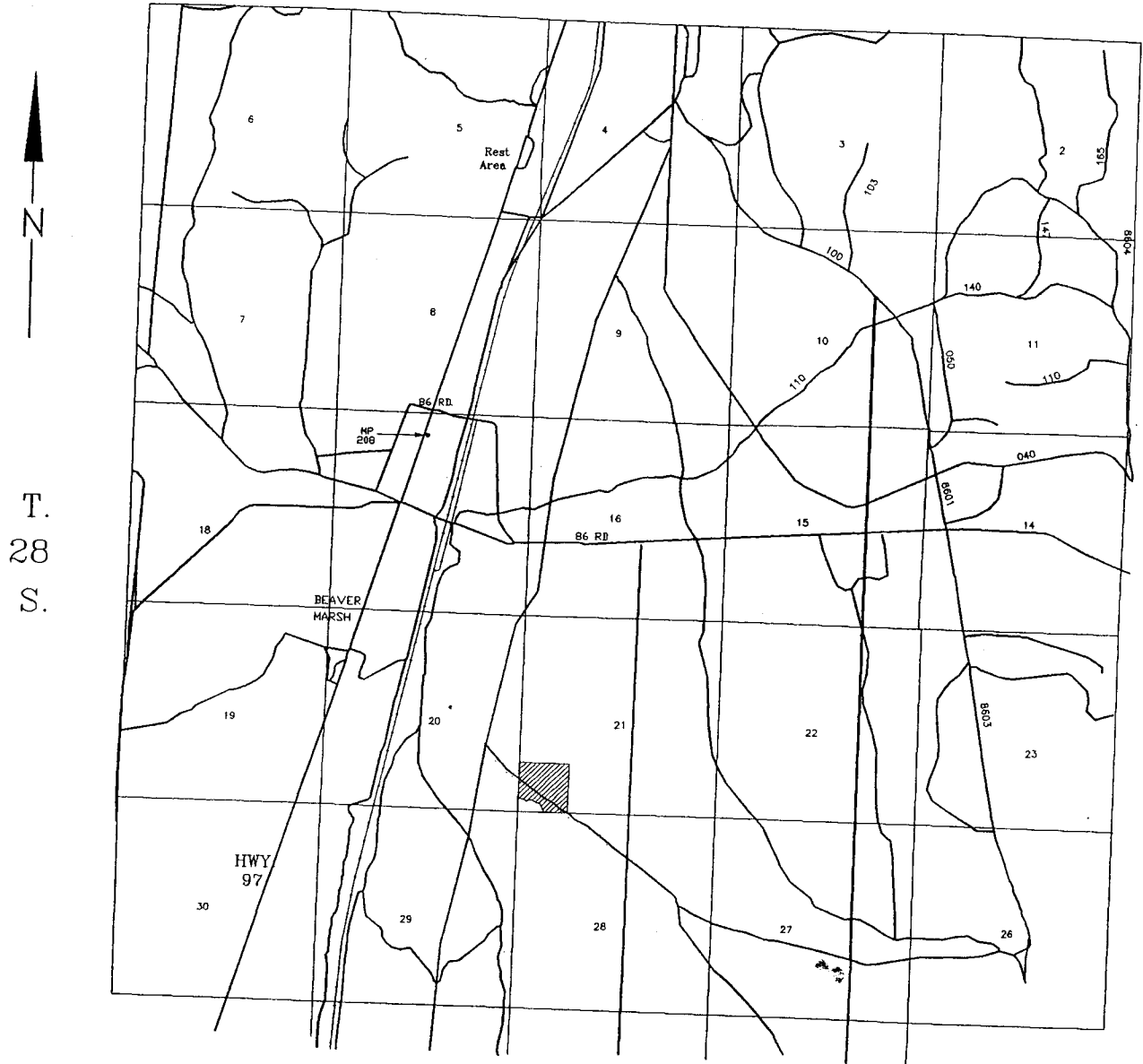


EXHIBIT "A"
VICINITY MAP
OF TIMBER SALE CONTRACT NO.
341-03-42
BEAVER RIM
KLAMATH COUNTY, OREGON

SALE AREA 