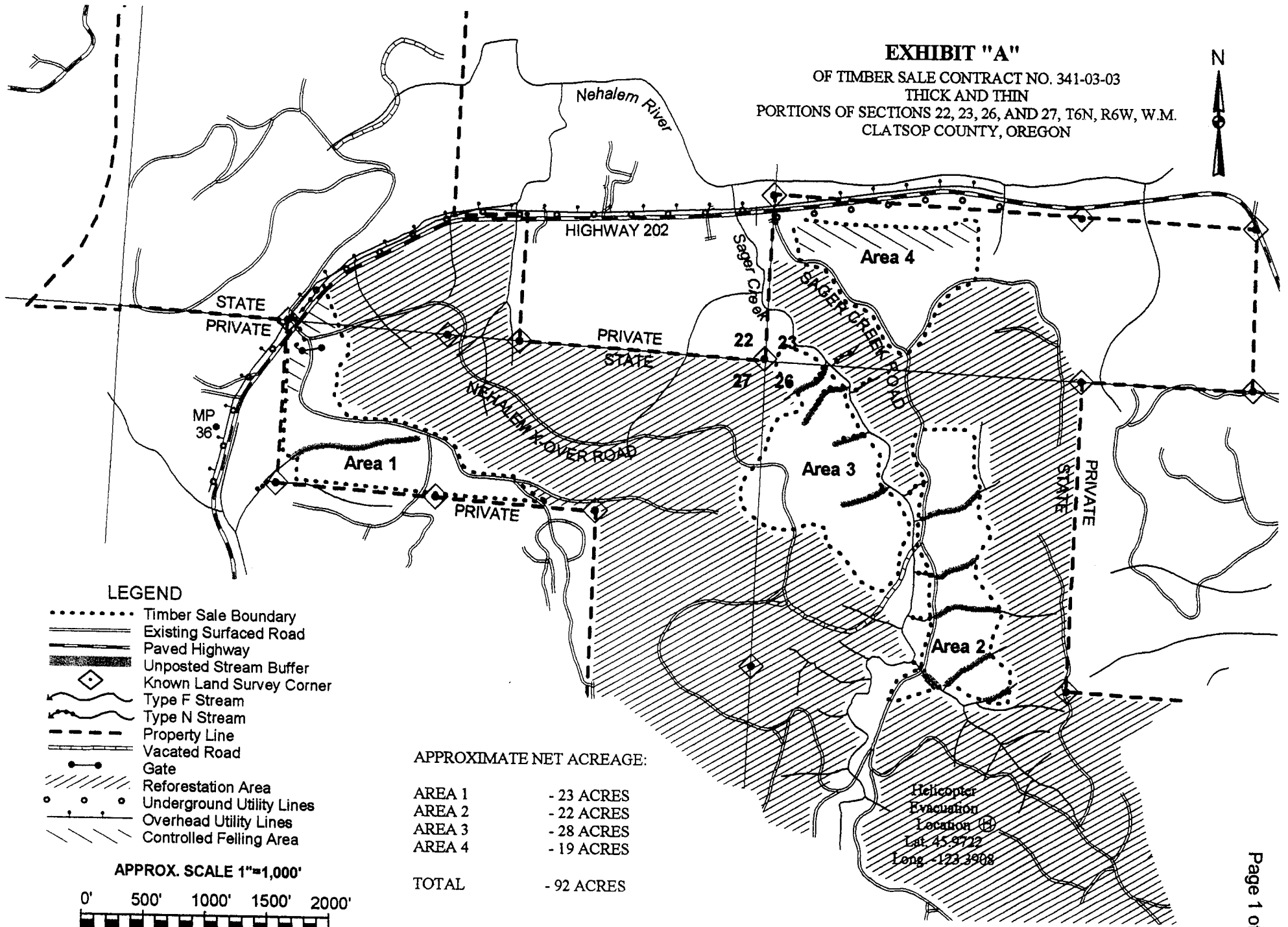


EXHIBIT "A"
 OF TIMBER SALE CONTRACT NO. 341-03-03
 THICK AND THIN
 PORTIONS OF SECTIONS 22, 23, 26, AND 27, T6N, R6W, W.M.
 CLATSOP COUNTY, OREGON



LEGEND

- Timber Sale Boundary
- Existing Surfaced Road
- Paved Highway
- ▬ Unposted Stream Buffer
- ◊ Known Land Survey Corner
- ~ Type F Stream
- ~ Type N Stream
- - - Property Line
- ▬ Vacated Road
- Gate
- ▨ Reforestation Area
- Underground Utility Lines
- Overhead Utility Lines
- ▨ Controlled Felling Area

APPROXIMATE NET ACREAGE:

AREA 1	- 23 ACRES
AREA 2	- 22 ACRES
AREA 3	- 28 ACRES
AREA 4	- 19 ACRES
TOTAL	- 92 ACRES

Helicopter
Evacuation
Location (H)
Lat. 45.9772
Long. -123.3908

APPROX. SCALE 1"=1,000'

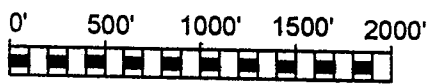
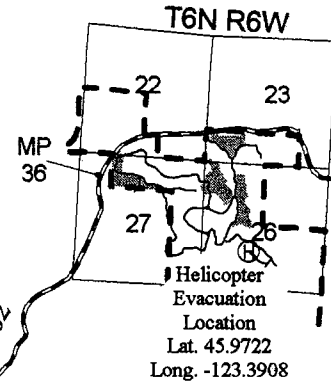




EXHIBIT "A"
VICINITY MAP
OF TIMBER SALE CONTRACT NO. 341-03-03
THICK AND THIN
PORTIONS OF SECTIONS 22, 23, 26, AND 27, T6N, R6W, W.M.
CLATSOP COUNTY, OREGON



Approx.
9 Miles
to Mist

Approx.
28 Miles
to Astoria

Highway 202

MP
29

Jewell

MP
5

Highway 103

Highway 26

Elsie

MP
9

MP
22