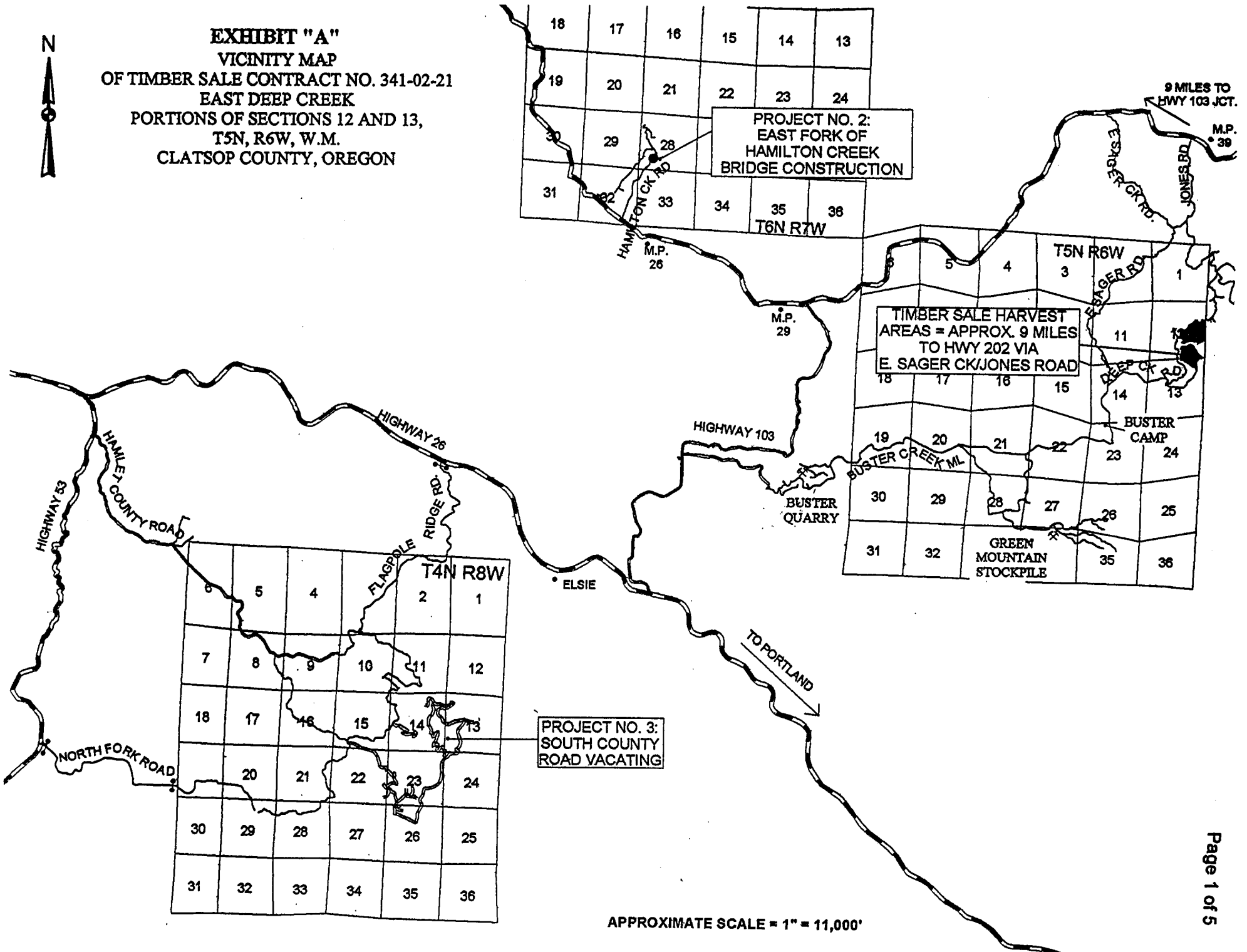


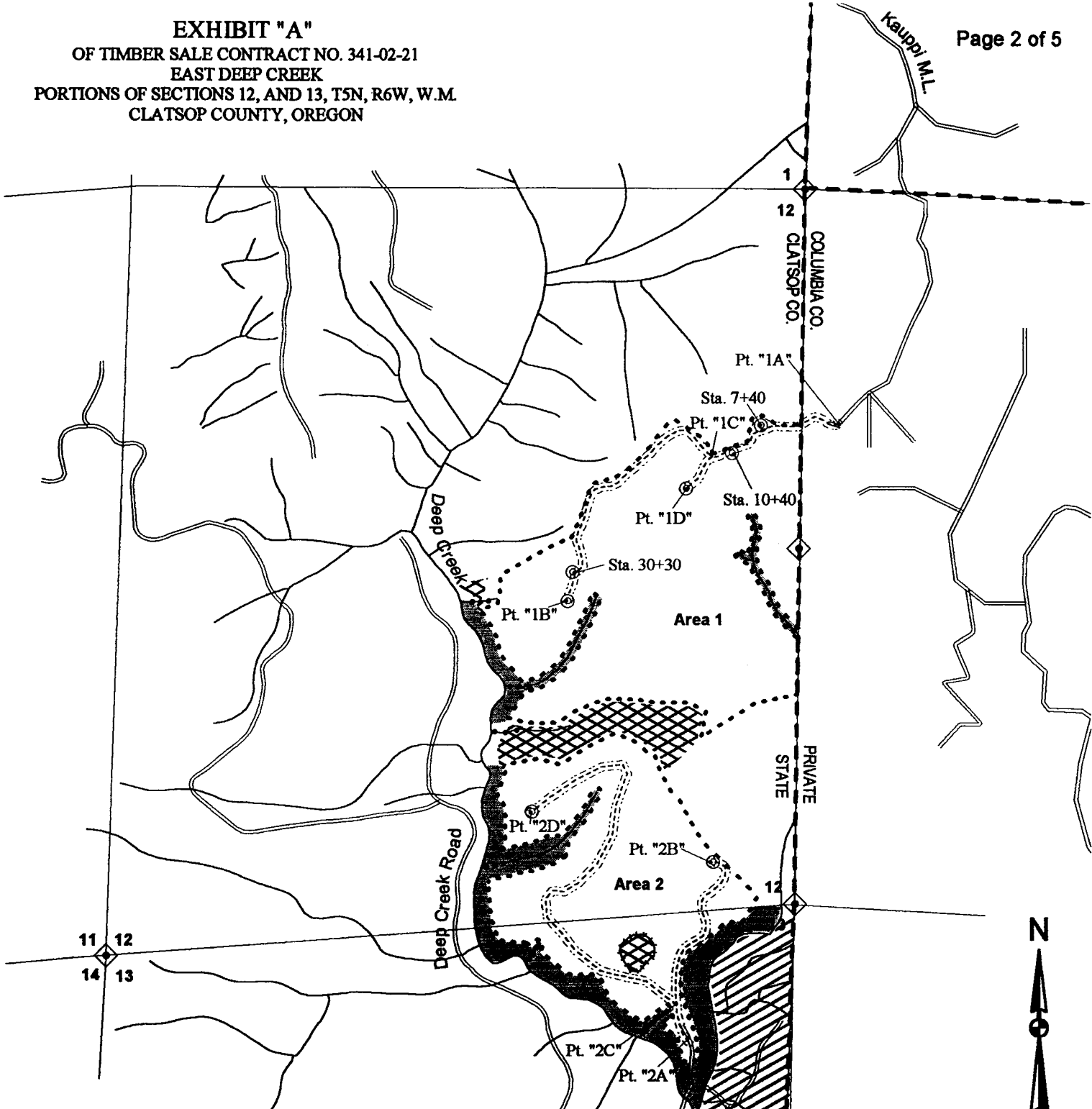


EXHIBIT "A"
VICINITY MAP
OF TIMBER SALE CONTRACT NO. 341-02-21
EAST DEEP CREEK
PORTIONS OF SECTIONS 12 AND 13,
T5N, R6W, W.M.
CLATSOP COUNTY, OREGON



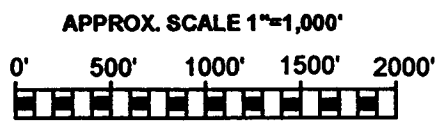
APPROXIMATE SCALE = 1" = 11,000'

EXHIBIT "A"
OF TIMBER SALE CONTRACT NO. 341-02-21
EAST DEEP CREEK
PORTIONS OF SECTIONS 12, AND 13, T5N, R6W, W.M.
CLATSOP COUNTY, OREGON



Approx. 9 Miles to Hwy 202
 via E. Sager Creek/
 Jones Road

- LEGEND**
- Timber Sale Boundary
 - Right Of Way Boundary
 - //// Reforestation Area
 - ◊ Known Land Survey Corner
 - ~ Type F Stream
 - ~ Type N Stream
 - Surfaced Existing Road
 - New Construction
 - Property Line
 - Area Boundary
 - XXXX GTRA
 - POINT "A" Point for Project Work
 - STA. 0+00 Survey Station
 - █ Stream Buffer



APPROXIMATE NET ACREAGE:

AREA 1	- 80.8 ACRES
AREA 2	- 57.2 ACRES
AREA 3 R/W	- 8.9 ACRES
TOTAL	- 146.9 ACRES

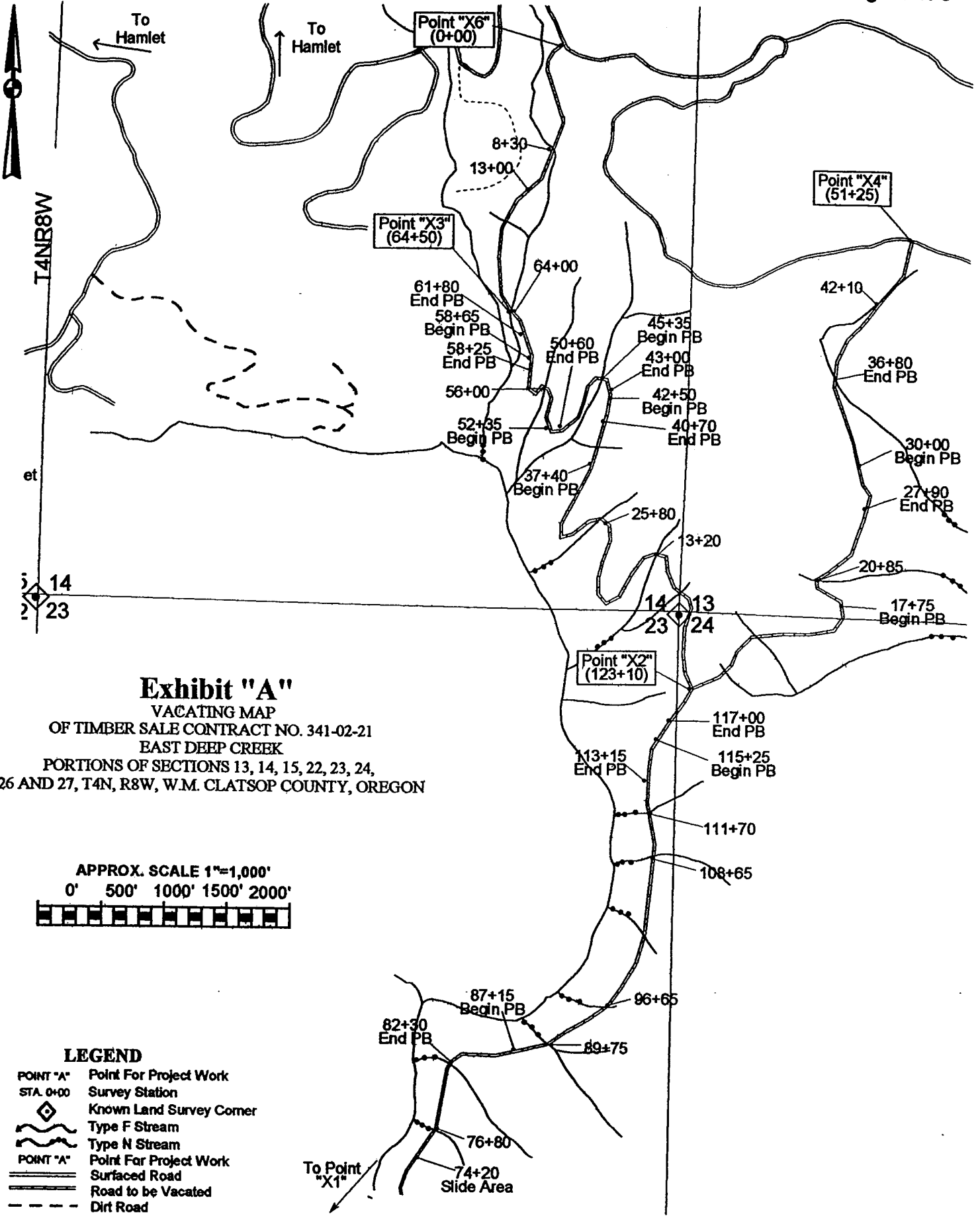


Exhibit "A"

VACATING MAP
OF TIMBER SALE CONTRACT NO. 341-02-21
EAST DEEP CREEK
PORTIONS OF SECTIONS 13, 14, 15, 22, 23, 24,
26 AND 27, T4N, R8W, W.M. CLATSOP COUNTY, OREGON

APPROX. SCALE 1"=1,000'

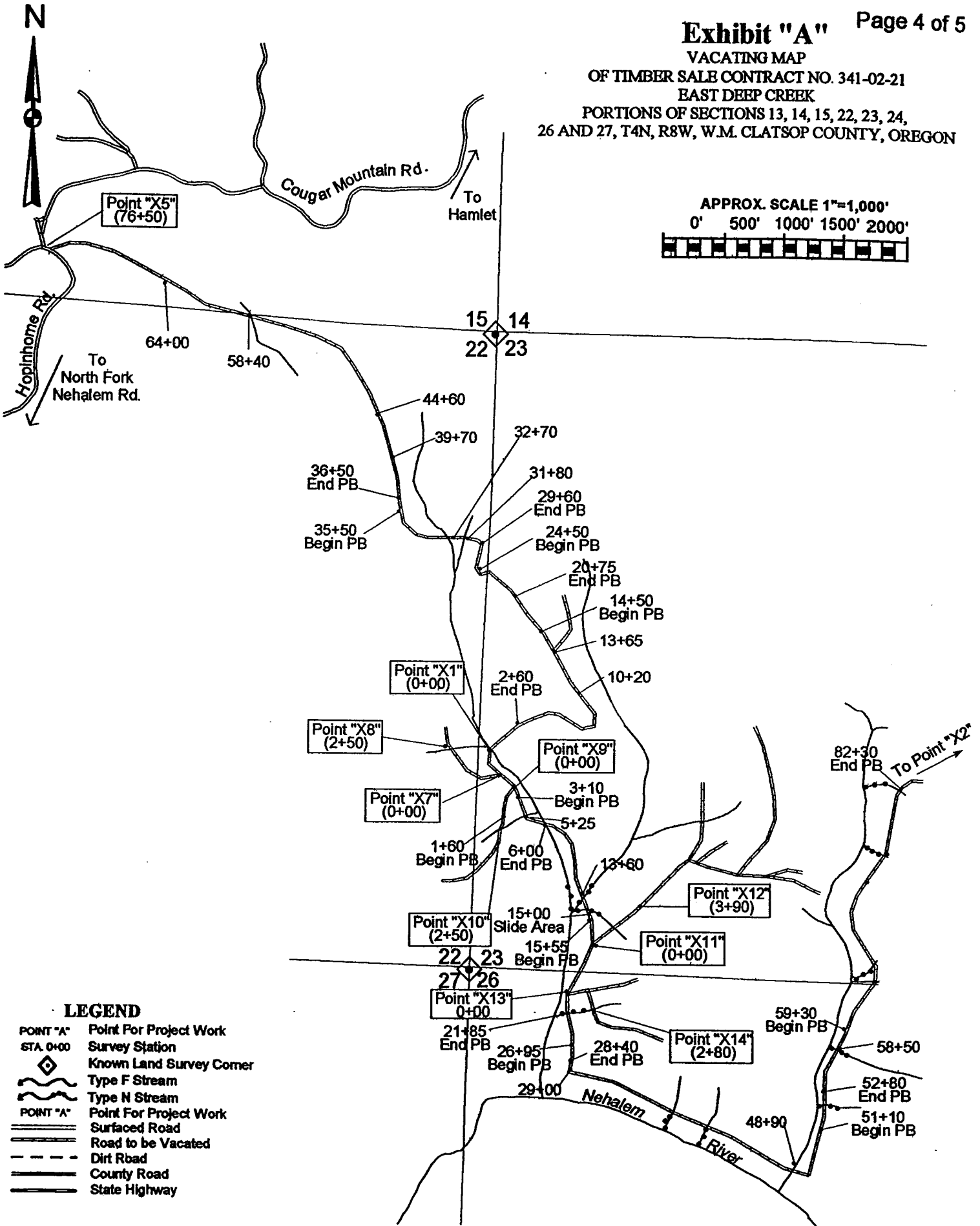
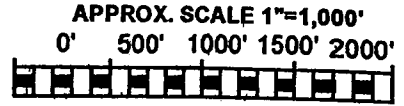
0' 500' 1000' 1500' 2000'



LEGEND

- POINT "A" Point For Project Work
- STA. 0+00 Survey Station
- Known Land Survey Corner
- Type F Stream
- Type N Stream
- POINT "A" Point For Project Work
- Surfaced Road
- Road to be Vacated
- Dirt Road
- County Road
- State Highway

VACATING MAP
 OF TIMBER SALE CONTRACT NO. 341-02-21
 EAST DEEP CREEK
 PORTIONS OF SECTIONS 13, 14, 15, 22, 23, 24,
 26 AND 27, T4N, R8W, W.M. CLATSOP COUNTY, OREGON



LEGEND

- POINT "A" Point For Project Work
- STA. 0+00 Survey Station
- Known Land Survey Corner
- Type F Stream
- Type N Stream
- POINT "A" Point For Project Work
- Surfaced Road
- Road to be Vacated
- Dirt Road
- County Road
- State Highway

EXHIBIT "A"

TIMBER SALE VICINITY MAP
OF TIMBER SALE CONTRACT NO. 341-02-21
EAST DEEP CREEK
PORTIONS OF SECTIONS 12 AND 13;
T5N, R6W, W.M.
CLATSOP COUNTY, OREGON

