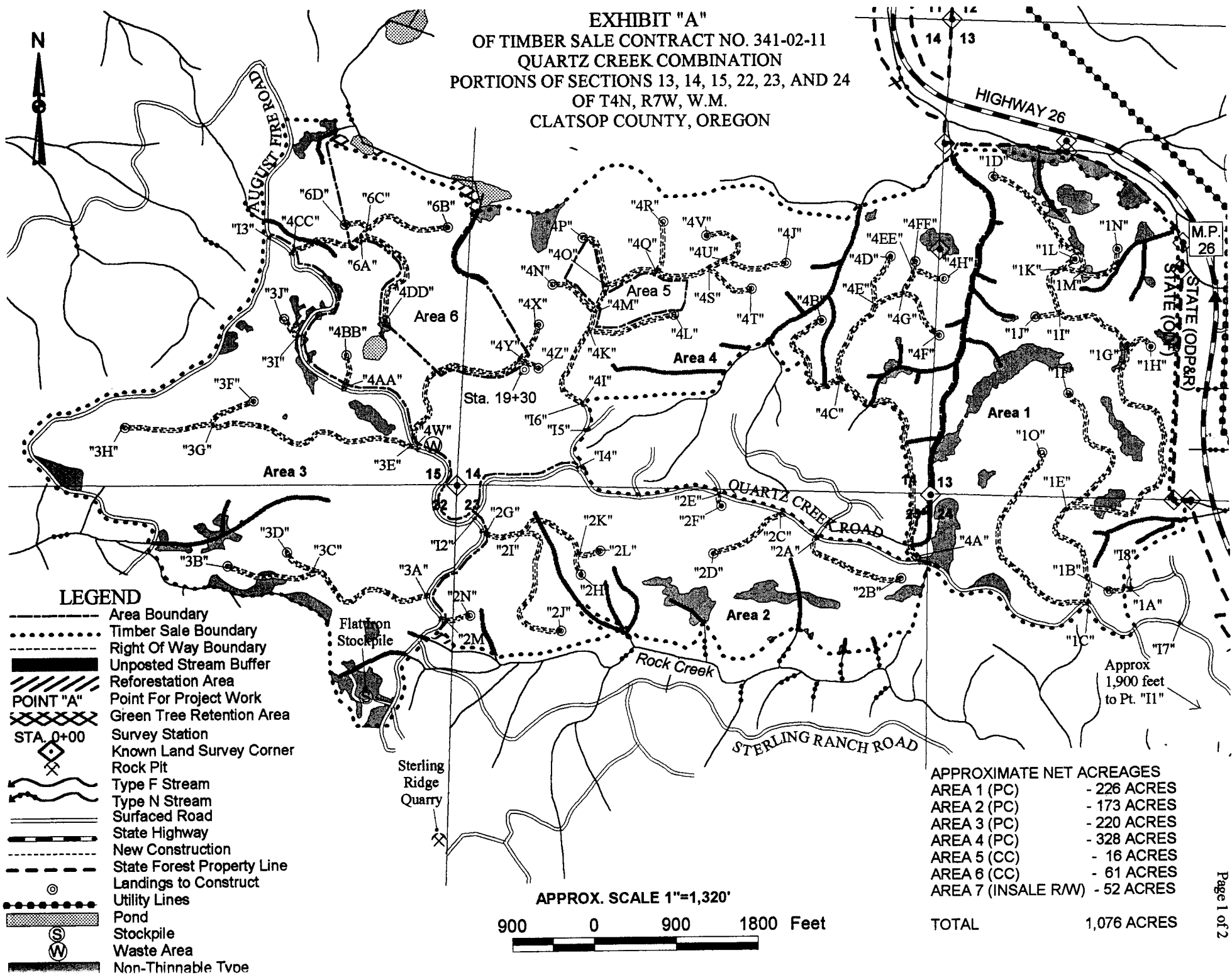


EXHIBIT "A"
OF TIMBER SALE CONTRACT NO. 341-02-11
QUARTZ CREEK COMBINATION
PORTIONS OF SECTIONS 13, 14, 15, 22, 23, AND 24
OF T4N, R7W, W.M.
CLATSOP COUNTY, OREGON

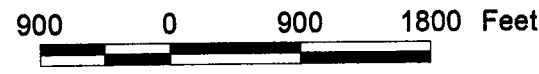


LEGEND

- Area Boundary
- Timber Sale Boundary
- Right Of Way Boundary
- Unposted Stream Buffer
- Reforestation Area
- POINT "A"
- Green Tree Retention Area
- STA. 0+00
- Survey Station
- Known Land Survey Corner
- Rock Pit
- Type F Stream
- Type N Stream
- Surfaced Road
- State Highway
- New Construction
- State Forest Property Line
- Landings to Construct
- Utility Lines
- Pond
- Stockpile
- Waste Area
- Non-Thinnable Tvee

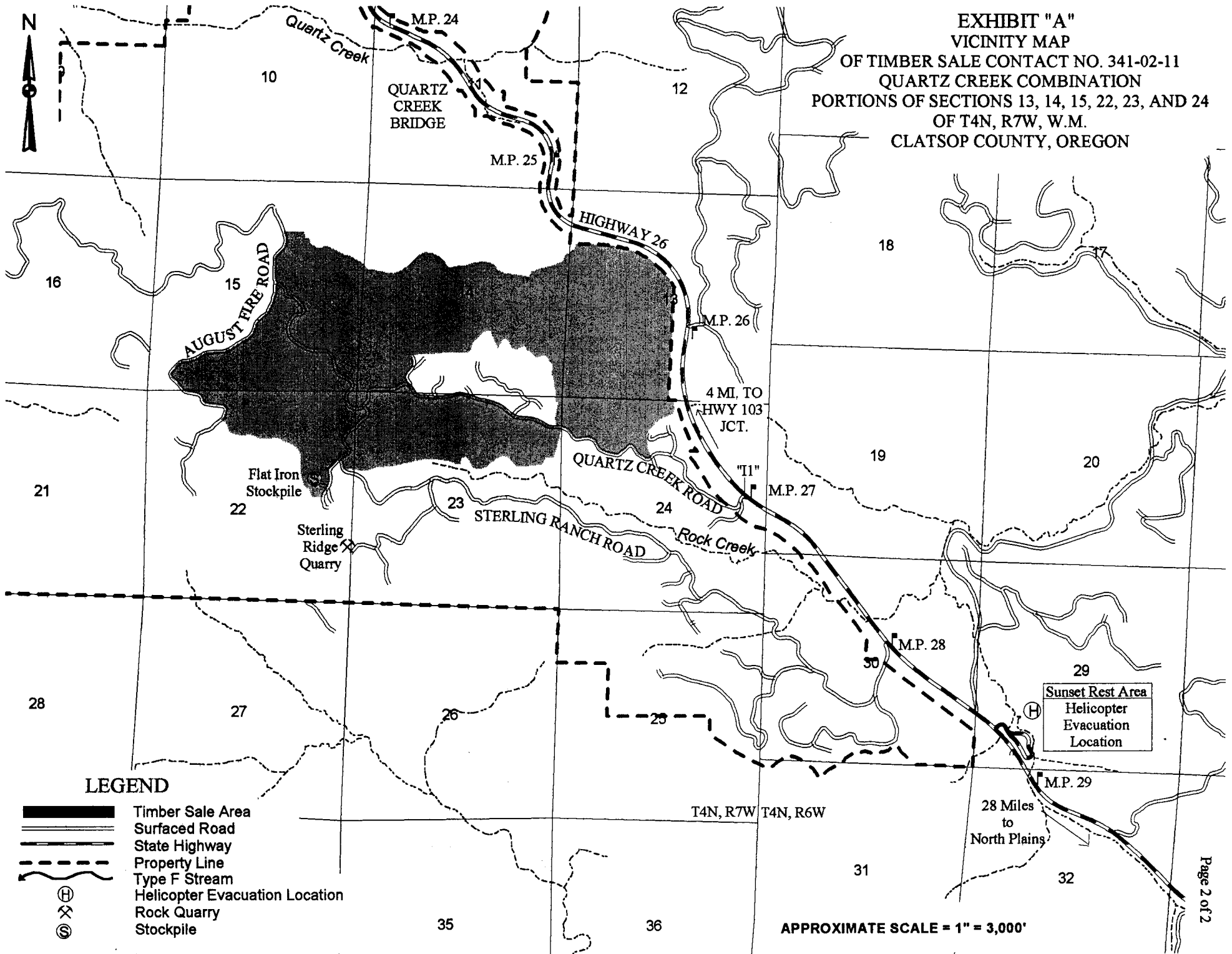
APPROXIMATE NET ACREAGES	
AREA 1 (PC)	- 226 ACRES
AREA 2 (PC)	- 173 ACRES
AREA 3 (PC)	- 220 ACRES
AREA 4 (PC)	- 328 ACRES
AREA 5 (CC)	- 16 ACRES
AREA 6 (CC)	- 61 ACRES
AREA 7 (INSALE RW)	- 52 ACRES
TOTAL	1,076 ACRES

APPROX. SCALE 1"=1,320'






Approx
1,900 feet
to Pt. "I1"

EXHIBIT "A"
VICINITY MAP
OF TIMBER SALE CONTACT NO. 341-02-11
QUARTZ CREEK COMBINATION
PORTIONS OF SECTIONS 13, 14, 15, 22, 23, AND 24
OF T4N, R7W, W.M.
CLATSOP COUNTY, OREGON



LEGEND

-  Timber Sale Area
-  Surfaced Road
-  State Highway
-  Property Line
-  Type F Stream
-  Helicopter Evacuation Location
-  Rock Quarry
-  Stockpile

APPROXIMATE SCALE = 1" = 3,000'